

ENDING HOMELESSNESS – LOOKING AT DATA

Carrie Poser

Executive Director, WI Balance of State CoC

November 2025

Impact



DATA



WORDS



PICTURES

POINT-IN-TIME

Point-in-Time – Balance of State CoC



	July 2019	July 2020	July 2021	July 2022	July 2023	July 2024	July 2025
ES	1808	--	--	1733	1885	1954	1826
TH	613	--	--	517	550	487	516
SH	7	--	--	5	2	0	0
UN	355	--	408	557	500	727	777
Total	2783	--	--	2813	2937	3169	3119

Point-in-Time:

- 4th Wednesday Jan & July
- Includes sheltered & unsheltered, domestic violence providers, non-gov't funded projects
- Snapshot of community
- CoC-wide Outreach activity

ES = Emergency Shelter/Motel Voucher

TH = Transitional Housing

SH = Safe Haven

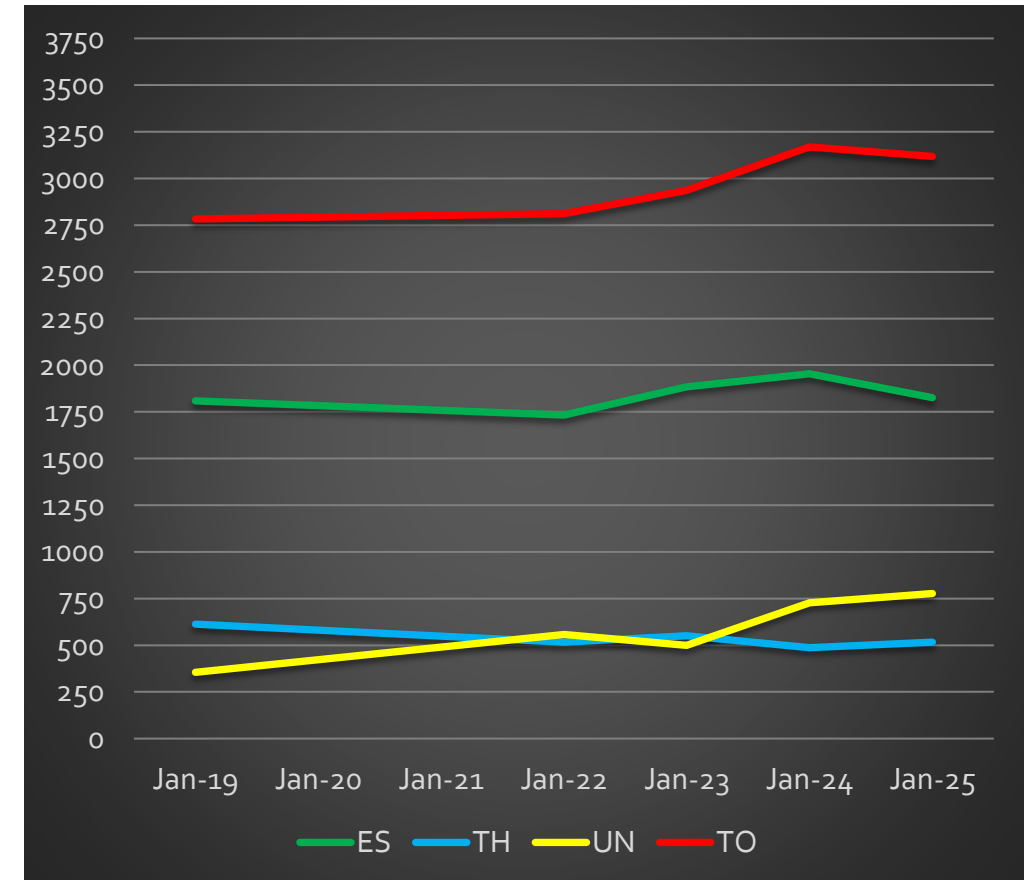
UN = Unsheltered

TO = Total

*Note:

There was no organized PIT in 2020 (Covid).

There were data issues in 2021 (HMIS).



Point-in-Time – Unsheltered

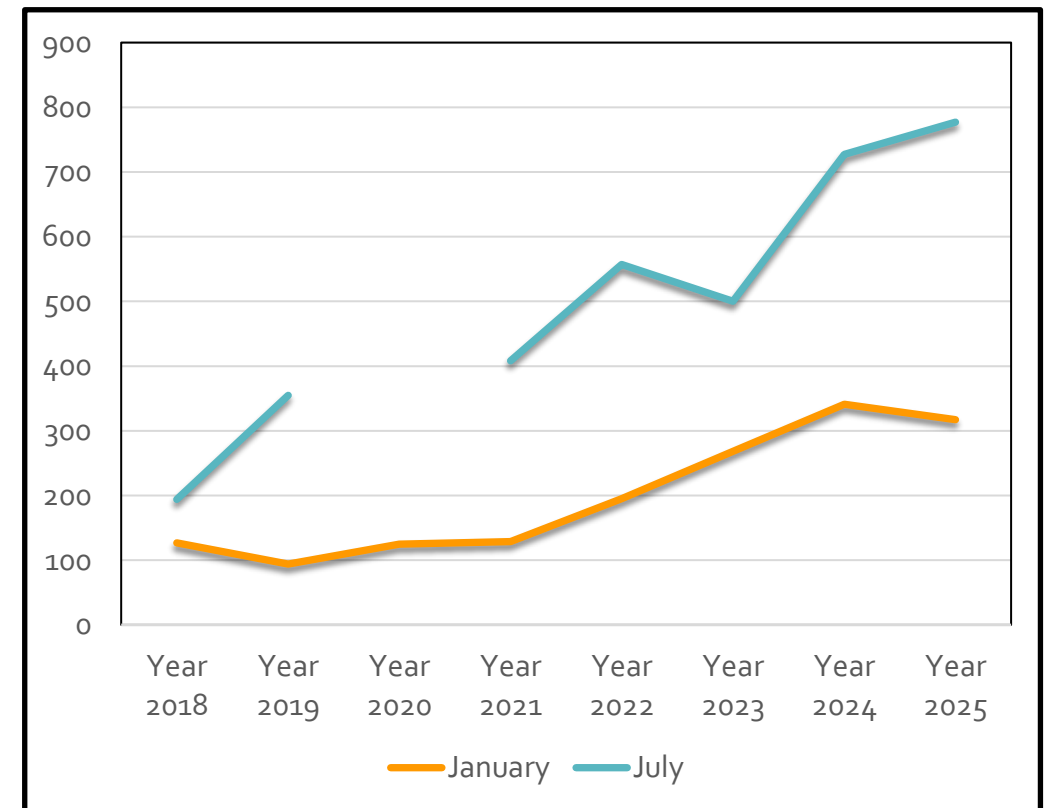


	Jan 2018	Jan 2019	Jan 2020	Jan 2021	Jan 2022	Jan 2023	Jan 2024	Jan 2025
# HH	106	83	109	114	151	248	270	263
# People	127	94	125	129	195	268	341	317

Increase in the number of people experiencing unsheltered homelessness increased by:

- **37.4%** between 2022 and 2023
- **27.2%** between 2023 and 2024

	July 2018	July 2019	July 2021	July 2022	July 2023	July 2024	July 2025
# HH	165	306	377	493	404	585	661
# People	194	355	408	557	500	727	777



Coalition Level - July Unsheltered Numbers



Coalition	2019	2021	2022	2023	2024	2025
Brown	31	42	89	125	154	179
Central	23	18	15	17	14	12
Coulee	57	90	140	64	41	40
Dairyland	23	40	36	53	104	44
East Central	6	17	0	7	4	1
Fox Cities	32	41	40	70	148	169
Jefferson	3	0	7	9	14	6
Kenosha	20	7	23	15	18	57
Lakeshore	25	11	18	28	63	59
North Central	31	21	31	19	12	12
Northeast	9	13	3	0	15	36
Northwest	4	7	16	5	25	8

Coalition	2019	2021	2022	2023	2024	2025
NWISH	0	2	0	0	1	4
Ozaukee	2	1	0	5	1	7
Rock-Walworth	9	16	3	21	25	35
Rural North	5	13	6	5	4	10
Southwest	0	15	25	0	9	26
Washington	2	0	0	0	0	2
Waukesha	38	14	31	27	37	35
West Central	19	5	13	4	1	8
Winnebago-land	16	35	61	26	38	27
TOTAL People	355	408	557	500	728	777

A solid blue vertical bar is positioned on the left side of the slide, extending from the top to the bottom.

COORDINATED ENTRY

WI Balance of State CoC - Coordinated Entry



HH without Children	11/12/25	8/4/25
Currently waiting on PL	2,203 people	2,214 people
Chronic Homeless	577 people	561 people
Veterans	70 people	64 people
Youth (18-24)	157 people	154 people
DV survivors (HMIS)	279 people	301 people
Average Length of Time (LOT) on list	154.94 days	148.89 days
Longest LOT on list	1,843 days	1,742 days
Number of people on list 200 days +	730 people 33.1% of list	699 people 31.6% of list

HH with Children	11/12/25	8/4/25
Currently waiting on PL	753 HH	749 HH
Chronic Homeless	93 HH	95 HH
Veterans	7 people	10 people
Youth (18-24)	72 people	64 people
DV survivors (HMIS)	246 people	240 people
Average Length of Time (LOT) on list	143.77 days	126.33 days
Longest LOT on list	964 days	998 days
Number of households on list 200 days +	241 HH 32% of list	238 HH 31.8% of list

WI Balance of State CoC - Coordinated Entry

According to CE
Data 11/12/25



Level of Needed Support	# HH w/out children	# HH w/ children	# Housing Solutions Nov. 2025	# Housing Solutions Aug 2025	# Housing Solutions May 2025
<u>Permanent Supportive Housing</u> Chronic with disability (more than 12 months homeless)	577	93	877 (29.7%)	869 (30.3%)	795 (30.6%)
Non-Chronic with disability & more than 12 months homeless	174	33			
<u>Rapid Re-housing with intensive case management</u> Non-Chronic with disability & less than 12 months homeless	805	201	1,432 (48.4%)	1350 (47.2%)	1270 (48.8%)
Non-Chronic without a disability & more than 12 months homeless	294	132			
<u>Rapid Re-housing</u> Non-Chronic without a disability & less than 12 months homeless	354	294	648 (21.9%)	643 (22.5%)	535 (20.6%)
Total	2,204	753	2,957	2862	2600

Definitions



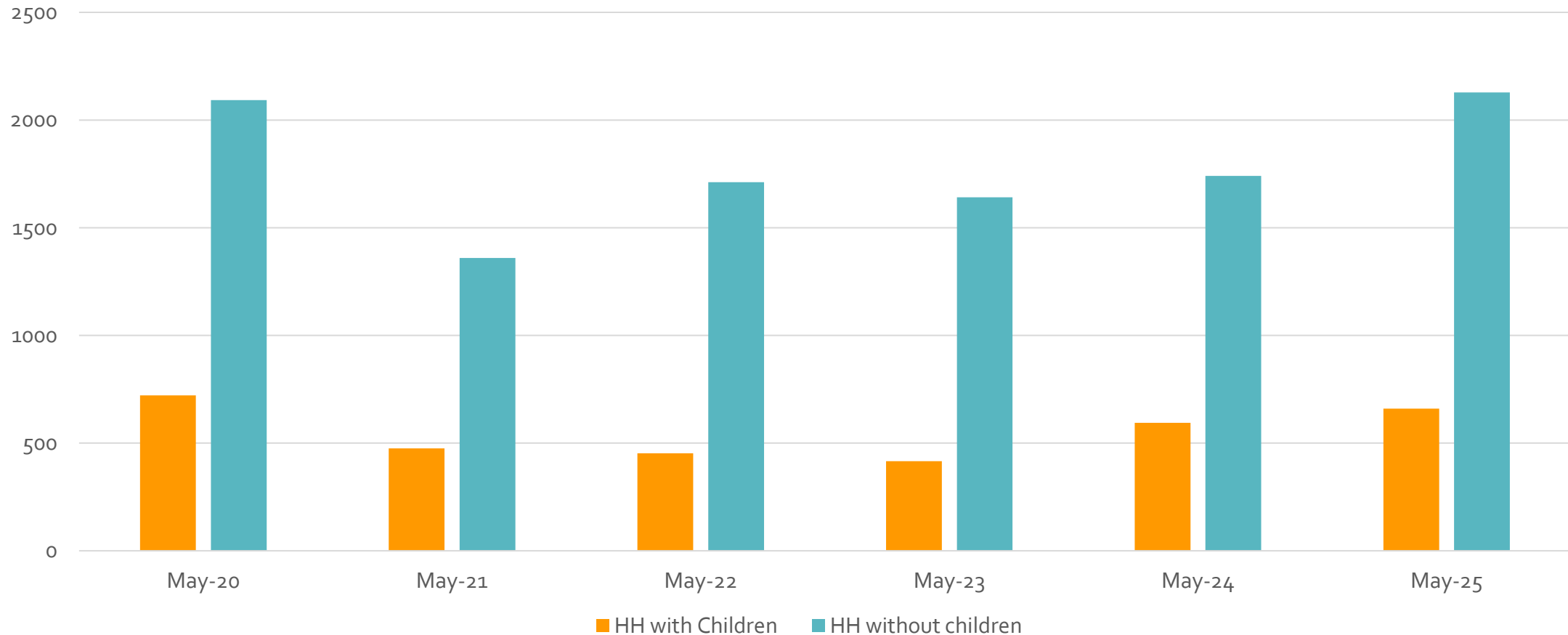
- **CH = Meets Chronic Homeless Definition**
 - Disability
 - Category 1 homeless situation (place not meant for human habitation or shelter)
 - Homeless for 12 consecutive months or 4 times within 3 years that totals 12 months

- **CH – 2nd priority = does not meet chronic homeless definition**
 - Disability
 - Category 1 homeless situation (place not meant for human habitation or shelter)
 - Homeless for 12 non-consecutive months or less than 4 times within 3 years

- **RRH w/ICM (intensive case management) = does not meet chronic homeless definition**
 - Disability, less than 12 months of homelessness AND
 - Without a disability, 12 months or more of homelessness

- **RRH = does not meet chronic homeless definition**
 - Without a disability, less than 12 months of homelessness

Homelessness by Household Type

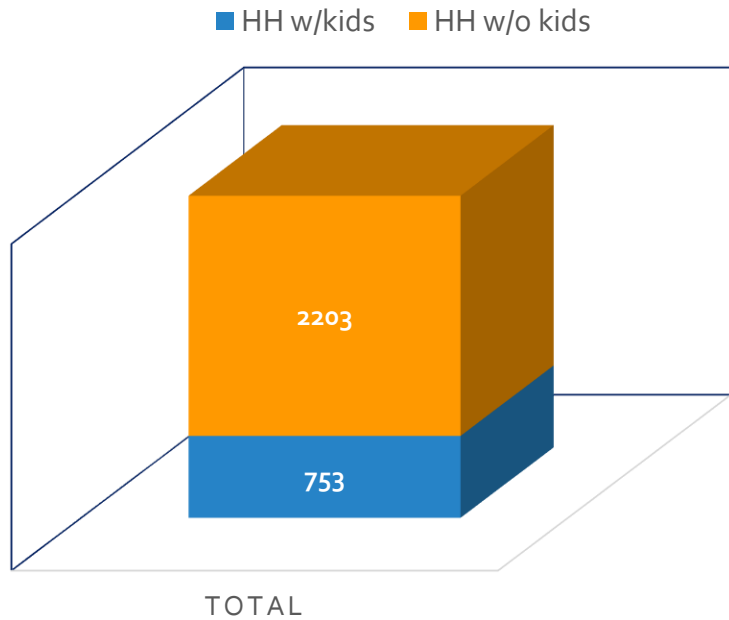


According to HMIS Coordinated Entry Prioritization List data 2020-2025

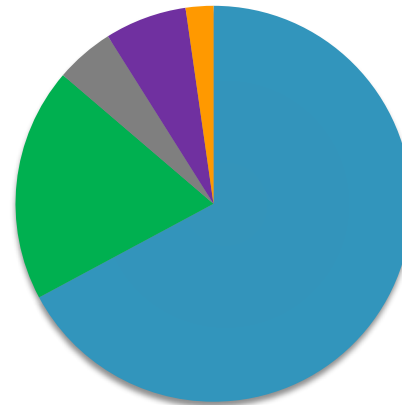
Coordinated Entry - Demographics



According to HMIS
Prioritization List
11/12/25

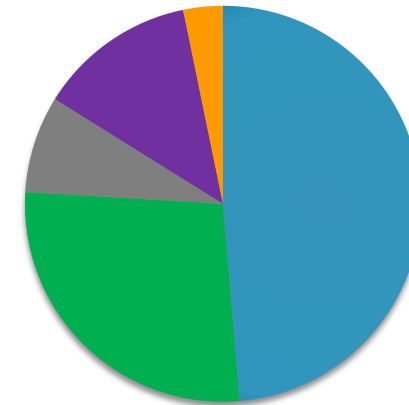


HH w/out kids

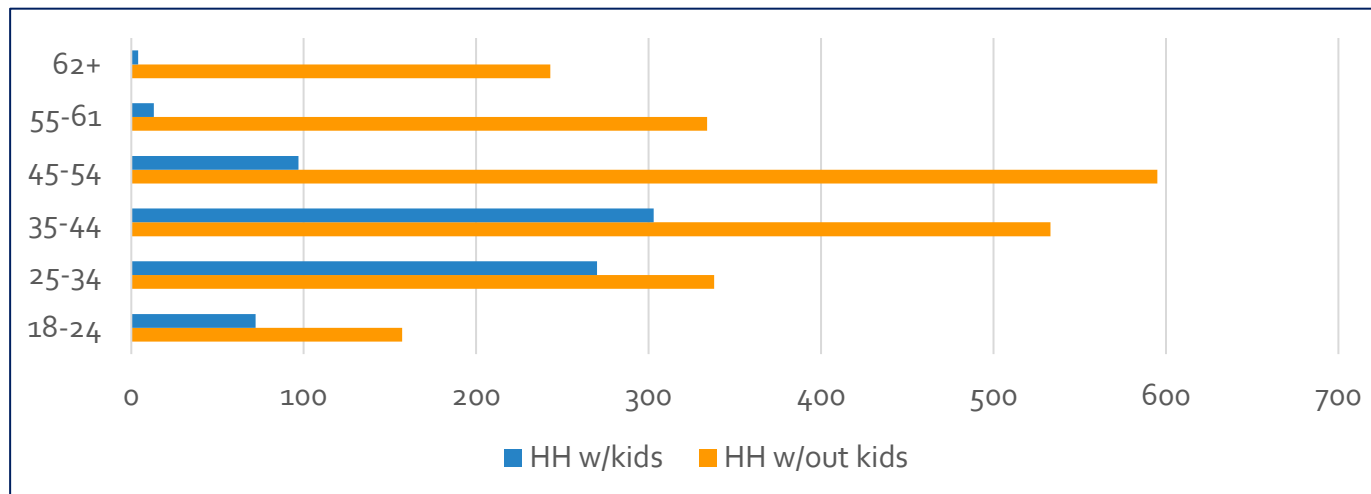


■ White ■ Black ■ Am Indian
■ Mutli ■ His/Lat

HH w/kids



■ White ■ Black ■ Am Indian
■ Multi ■ His/Lat



Coordinated Entry – HMIS Prioritization



Coalition	HH w/out kids	HH w/kids	Total HH Nov. 2025	Total HH Aug 2025	Average # days on list HH w/o	Average # days on list HH w
Brown	398	239	637	677	158.07	144.92
Central	275	112	387	363	170.08	118.99
Coulee	237	61	298	335	205.33	118.26
Dairyland	242	65	307	340	152.95	101.55
East Central	134	59	193	177	134.88	144.0
Fox Cities	430	194	624	598	159.63	160.11
Jefferson	125	77	202	165	118.84	119.25
Kenosha	229	90	319	306	125.35	118.41
Lakeshore	184	105	289	272	155.50	128.33
North Central	98	52	150	154	114.08	118.08
Northeast	164	112	276	261	143.83	131.13
Northwest	94	44	138	155	127.89	127.70

Coalition	HH w/out kids	HH w/kids	Total HH Nov. 2025	Total HH Aug 2025	Average # days on list HH w/o	Average # days on list HH w
NWISH	77	60	137	147	149.31	141.80
Ozaukee	77	51	128	109	111.81	125.02
Rock-Walworth	240	131	371	315	118.66	132.5
Rural North	90	36	126	140	100.29	116.0
Southwest	61	35	96	92	108.3	117.74
Washington	108	58	166	152	108.55	122.52
Waukesha	249	94	343	268	136.83	123.63
West Central	244	82	326	341	150.42	106.09
Winnebago-land	362	143	505	479	161.86	182.05

Coordinated Entry – HMIS Prioritization



Coalition	Vet HH	CH HH	DV HH	Youth HH	Senior HH
Brown	11	172	163	56	94
Central	8	52	79	24	74
Coulee	10	90	52	19	66
Dairyland	8	93	48	21	60
East Central	4	41	45	12	31
Fox Cities	7	139	132	33	100
Jefferson	1	32	50	8	32
Kenosha	8	73	80	23	58
Lakeshore	6	58	80	17	49
North Central	1	29	42	6	26
Northeast	1	61	81	11	41
Northwest	3	27	35	5	23

Coalition	Vet HH	CH HH	DV HH	Youth HH	Senior HH
NWISH	1	27	49	4	14
Ozaukee	4	15	35	12	17
Rock-Walworth	10	70	91	28	77
Rural North	1	30	27	7	22
Southwest	1	14	24	3	13
Washington	6	17	34	17	24
Waukesha	7	63	66	27	78
West Central	14	84	55	15	71
Winnebago-land	10	115	97	19	84

Coordinated Entry – Non HMIS Prioritization



Coalition	HH w/out kids	HH w/kids	Total HH	Compare (Aug. 2025)
Brown	91	118	209	237
Central	52	57	109	112
Coulee	12	12	24	14
Dairyland	50	55	105	86
East Central	5	5	10	8
Fox Cities	32	29	61	54
Jefferson	8	15	23	27
Kenosha	27	11	38	50
Lakeshore	14	14	28	27
North Central	2	5	7	11
Northeast	0	0	0	0
Northwest	5	5	10	3

Coalition	HH w/out kids	HH w/kids	Total HH	Compare (Aug. 2025)
NWISH	1	1	2	2
Ozaukee	1	5	6	3
Rock-Walworth	19	25	44	41
Rural North	5	11	16	17
Southwest	25	13	38	13
Washington	3	0	3	3
Waukesha	4	7	11	14
West Central	25	37	62	58
WinnebagoLand	8	6	14	15

	Feb 2019	Feb 2020	Feb 2021	Feb 2022	Feb 2023	May 2024	May 2025	Aug 2025	Nov. 2025
Total	236	310	344	600	540	841	797	795	820

Non-HMIS Prioritization List as of 11/10/25

WORDS

Outstanding Achievement in Domestic Abuse Issues Awards Held at State Capitol (Oct. 21, 2025)



Ryan Graham of Eau Claire, Wisconsin Balance of State Continuum of Care Homeless Systems Manager, was honored with the Sharon Lewandowski Justice Award.

This award recognizes survivors of domestic abuse who have overcome adversity and had the courage to survive, have empowered themselves, and serve as an inspiration for others.

With more than 20 years of experience, Ryan uses his extensive knowledge to help survivors experiencing homelessness by identifying needs and prioritizing their access to housing.

Housing is the number one priority for survivors and his dedication and collaboration promotes safety, empowerment, and justice. The impact Ryan has made is immeasurable and has forever changed the lives of survivors.



<https://dcf.wisconsin.gov/newsletter/10-30-dv-awards>

PICTURES



Balance of State CoC Summit in Baraboo (Sept 2025)





**Erika presenting
at Home for
Everyone at
Wisconsin Dells
(Aug 2025)**



**Liz, Sara & Molly enjoying
down time during Poverty
Matters.**



**Erika, Liz & Sara enjoying down
time after Home for Everyone!**

**Liz presenting at the
Poverty Matters
Conference in Wisconsin
Dells (Oct 2025)**





Erika, Liz, and Sara attending NHSDC in Baltimore, MD (Oct 2025)



Erika presenting at NHSDC in Baltimore, MD (Oct 2025)



Carrie presenting at Rock Walworth Coalition (Oct 2025)



Carrie presenting at Ozaukee Coalition and Liz & Ryan attending (Oct 2025)

Contact Information



Carrie Poser
CoC Director
Wisconsin Balance of State CoC
carrie.poser@wibos.org

PO Box 272, Eau Claire, WI 54702
Phone: 715-598-3301

Website: www.wiboscoc.org

**We are who we are waiting for.
There is no cavalry.**

- [Tomiquia Moss](#), California State Secretary of BCSHA

Follow us on social media!



[@wiboscoc](https://www.instagram.com/wiboscoc)



[Wisconsin Balance of State Continuum of Care](https://www.facebook.com/WisconsinBalanceofStateContinuumofCare)

Want to receive the WI BoS Newsletter?

Send an email to: erika.olson@wibos.org

You'll get bi-monthly news and updates on funding, trainings, resources, deadlines, projects; information and action items around State and Federal advocacy initiatives; State & Federal policies and practices, decisions, and changes that impact the CoC, agencies, community partners, and the people at-risk and experiencing homelessness; and announcements from our partners - And More!