

# ENDING HOMELESSNESS – LOOKING AT DATA

---

Carrie Poser

CoC Director, WI Balance of State CoC

August 2023

A solid blue vertical bar is positioned on the left side of the slide, extending from the top to the bottom.

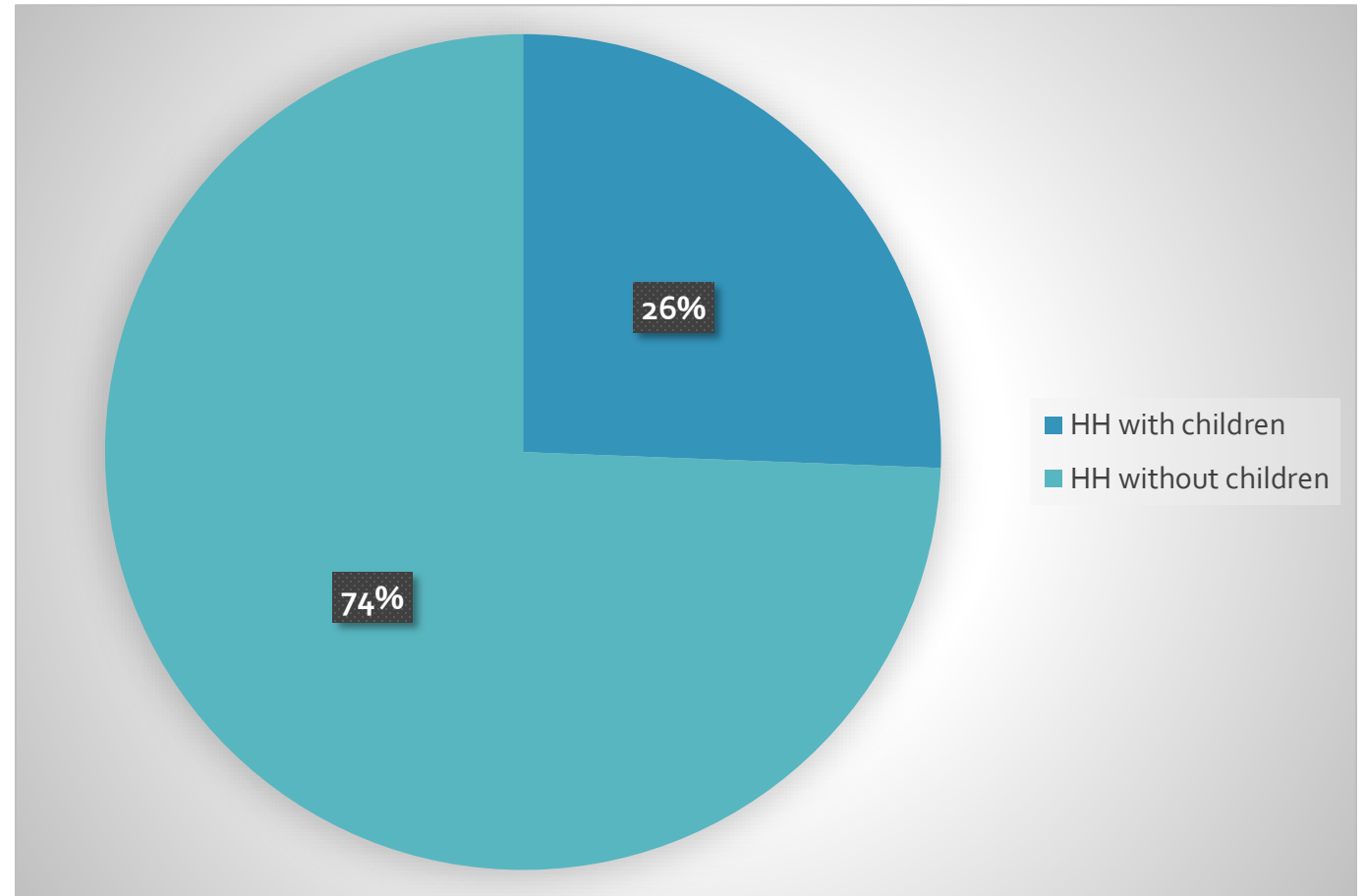
# **COORDINATED ENTRY**

# Homelessness by Household Type



	Feb 2020	Feb 2021	Feb 2022	Feb 2023
HH w/out	2,093 74%	1360 74%	1625 79%	1,819 79%
HH with	722 26%	475 26%	421 21%	484 21%

	May 2023	Aug 2022	Aug 2023	Nov 2022
HH w/out	<b>1,641</b> <b>80%</b>	1,809 80%	<b>1,470</b> <b>74%</b>	1,759 77%
HH with	<b>416</b> <b>20%</b>	462 20%	<b>506</b> <b>26%</b>	525 23%



According to CE Data 8.7.23

# WI Balance of State CoC - Coordinated Entry



HH without Children	8/7/23	5/15/23	2/3/23
Currently waiting on PL	<b>1,470 people</b>	1,641 people	1,819 people
Chronic Homeless	<b>330 people</b>	340 people	375 people
Veterans	<b>63 people</b>	59 people	73 people
Youth (18-24)	<b>144 people</b>	135 people	149 people
DV survivors (HMIS)	<b>143 people</b>	141 people	173 people
Average Length of Time (LOT) on list	<b>147.5 days</b>	157.7 days	162.9 days
Longest LOT on list	<b>1,482 days</b>	1,398 days	1,453 days
Number of people on list 200 days +	<b>407 people</b>	436 people	516 people

HH with Children	8/7/23	5/15/23	2/3/23
Currently waiting on PL	<b>506 HH</b>	416 HH	484 HH
Chronic Homeless	<b>36 people</b>	38 people	34 people
Veterans	<b>3 people</b>	4 people	9 people
Youth (18-24)	<b>55 people</b>	56 people	52 people
DV survivors (HMIS)	<b>126 people</b>	111 people	112 people
Average Length of Time (LOT) on list	<b>84.52 days</b>	117.9 days	135.8 days
Longest LOT on list	<b>523 days</b>	868 days	839 days
Number of households on list 200 days +	<b>76 HH</b>	73 HH	114 HH

# WI Balance of State CoC - Coordinated Entry



Level of Needed Support	# HH w/out children	Average months homeless	# HH w/ children	Average months homeless	# Housing Solutions Aug 2023	# Housing Solutions May 2023	# Housing Solutions Feb. 2023
<u>Permanent Supportive Housing</u> Chronic with disability (more than 12 months homeless)	343	32.6	36	22	<b>474 (24%)</b>	477 (23%)	534 (23%)
Non-Chronic with disability & more than 12 months homeless	89	26.6	6	22			
<u>Rapid Re-housing with intensive case management</u> Non-Chronic with disability & less than 12 months homeless	472	4.8	123	4.5	<b>968 (49%)</b>	1,043 (51%)	1,107 (48%)
Non-Chronic without a disability & more than 12 months homeless	266	36	107	23.2			
<u>Rapid Re-housing</u> Non-Chronic without a disability	307	4.6	234	3.9	<b>541 (27%)</b>	537 (26%)	662 (29%)
<b>Total</b>	<b>1,477</b>		<b>506</b>		<b>1,983</b>	<b>2,057</b>	<b>2,303</b>

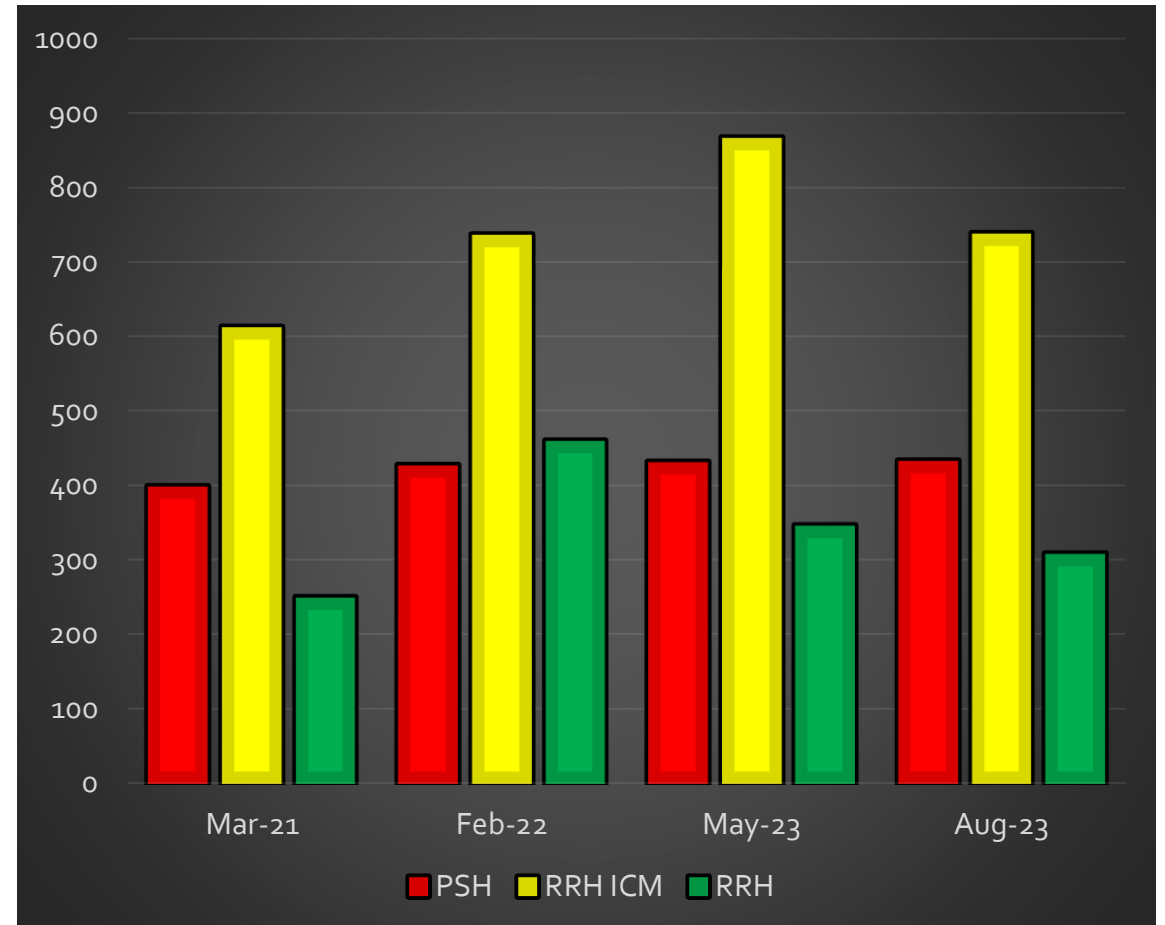
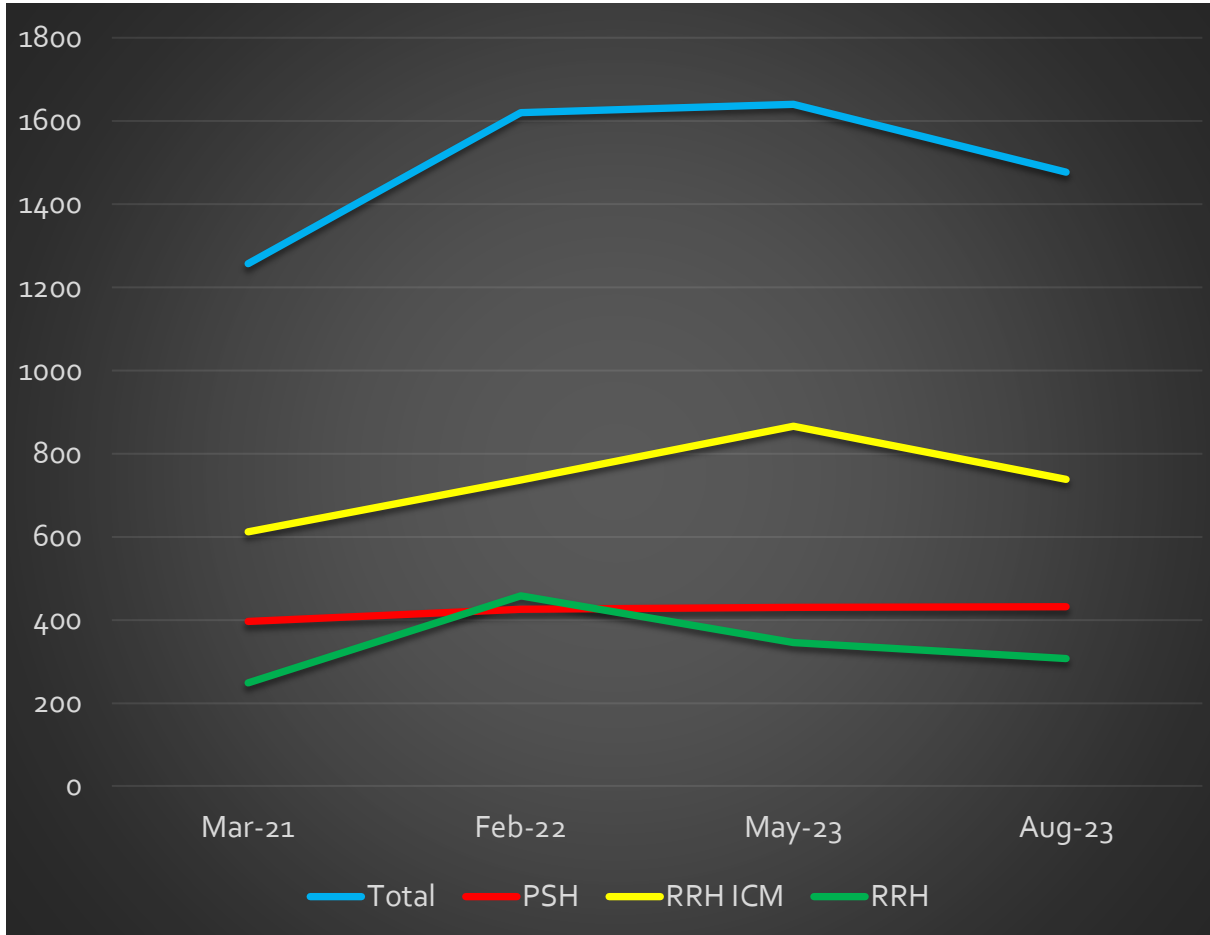
According to CE Data 8.7.23

# Definitions



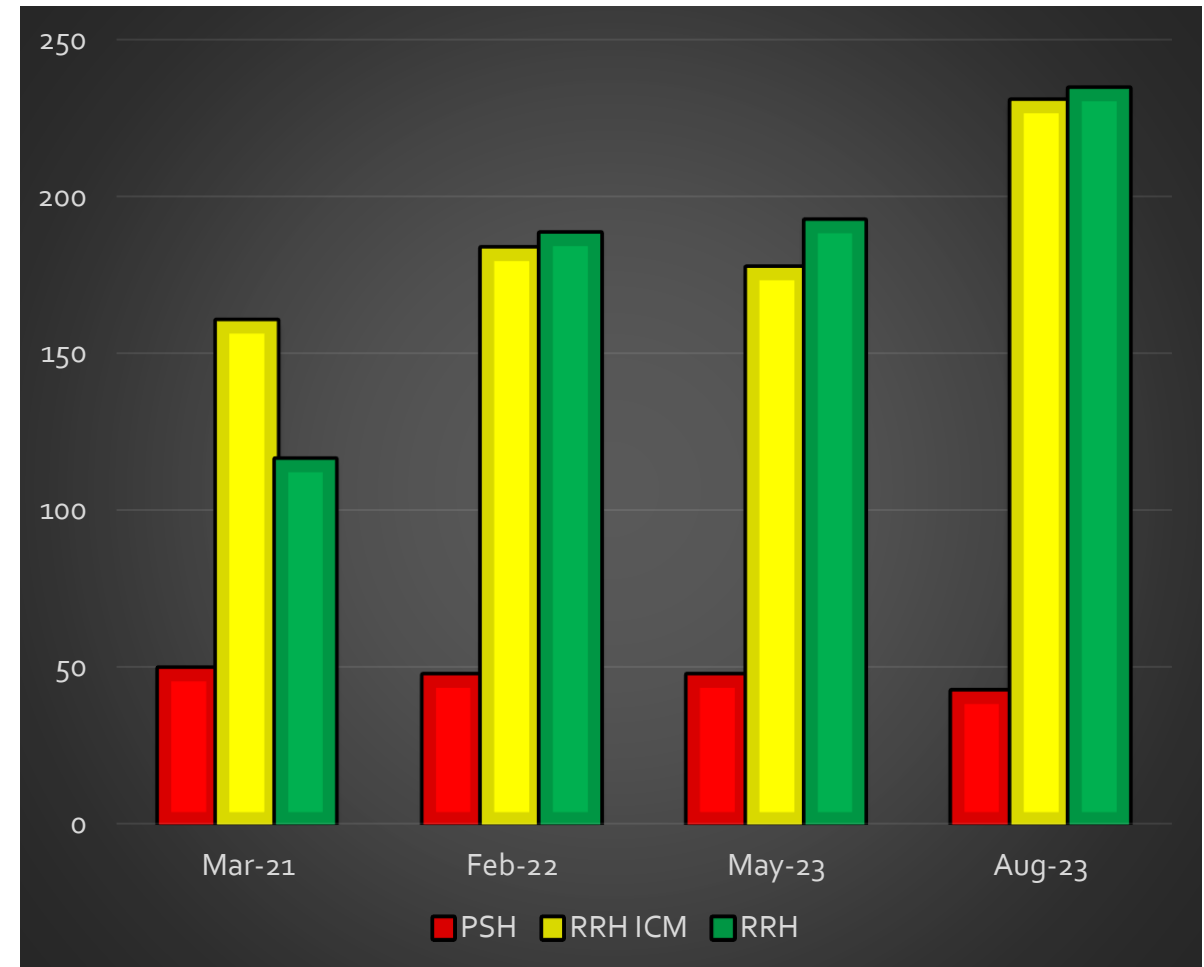
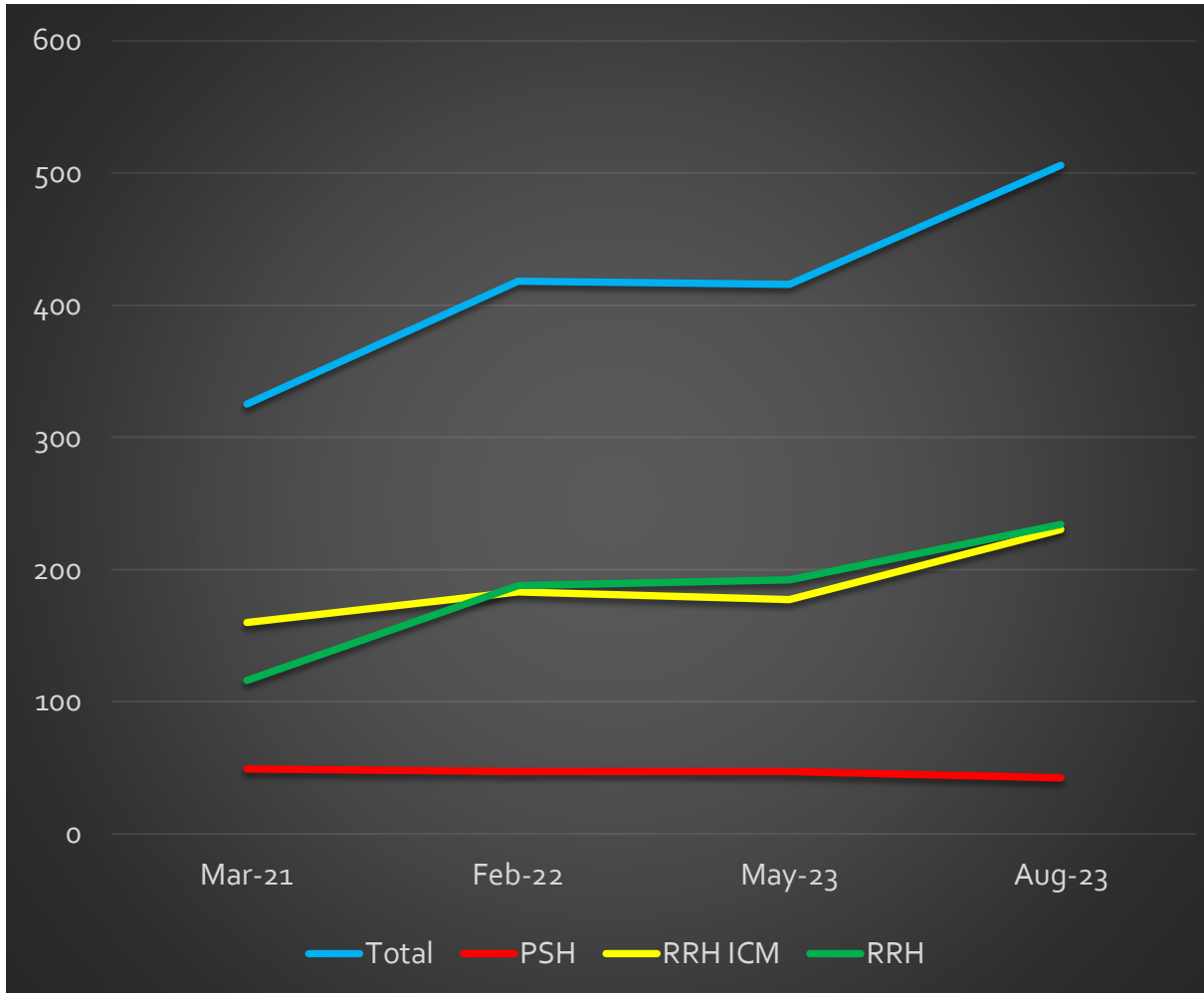
- **CH = Meets Chronic Homeless Definition**
  - Disability
  - Category 1 homeless situation (place not meant for human habitation or shelter)
  - Homeless for 12 consecutive months or 4 times within 3 years that totals 12 months
  
- **CH – 2<sup>nd</sup> priority = does not meet chronic homeless definition**
  - Disability
  - Category 1 homeless situation (place not meant for human habitation or shelter)
  - Homeless for 12 non-consecutive months or less than 4 times within 3 years
  
- **RRH w/ICM (intensive case management) = does not meet chronic homeless definition**
  - Disability, less than 12 months of homelessness AND
  - Without a disability, 12 months or more of homelessness
  
- **RRH = does not meet chronic homeless definition**
  - Without a disability, less than 12 months of homelessness

# Households without Children – Permanent Housing Solutions Needed



Balance of State CE Data – as of 8/7/23

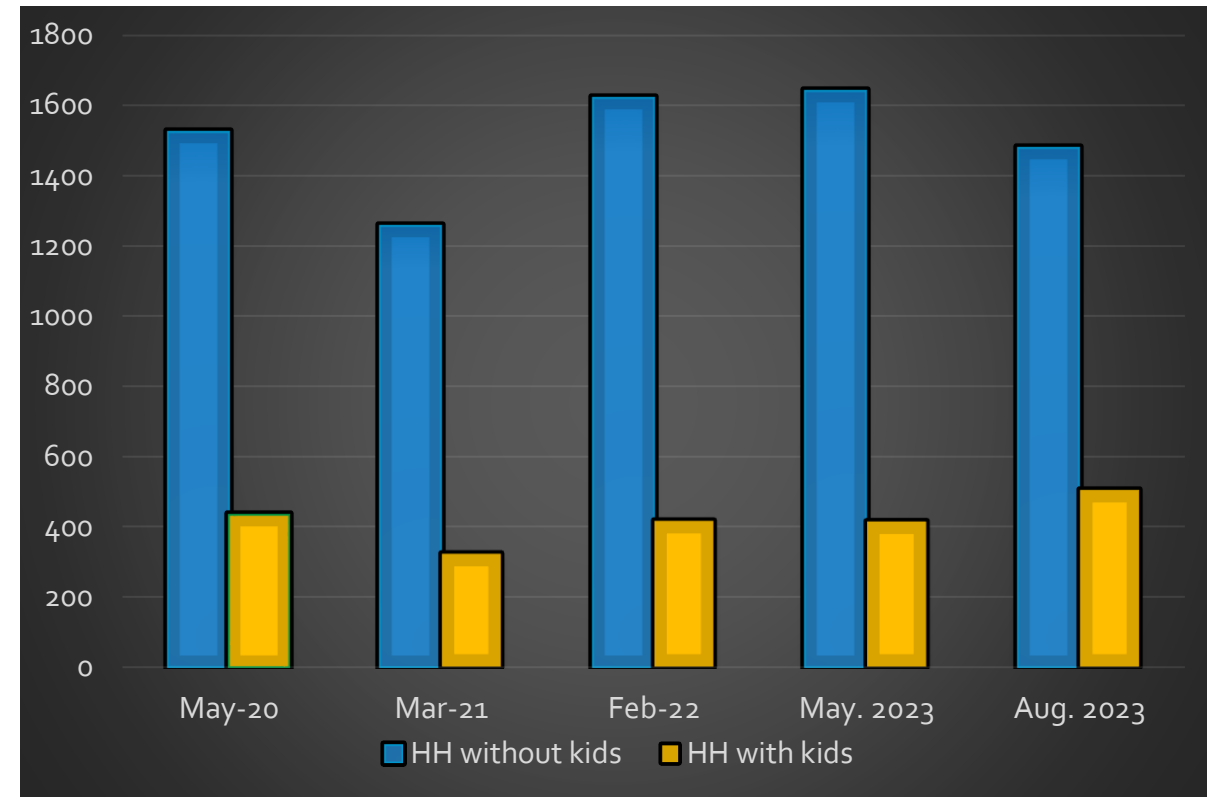
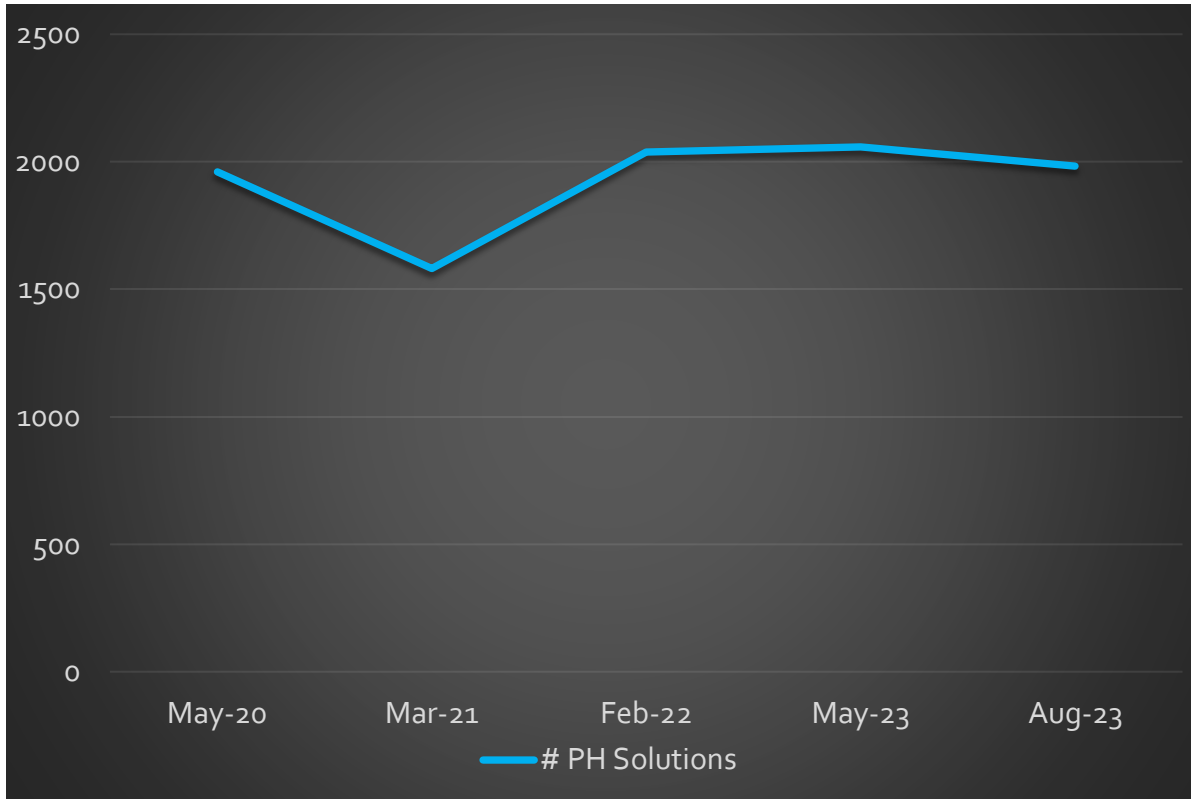
# Households with Children – Permanent Housing Solutions Needed



Balance of State CE Data – as of 8/7/23

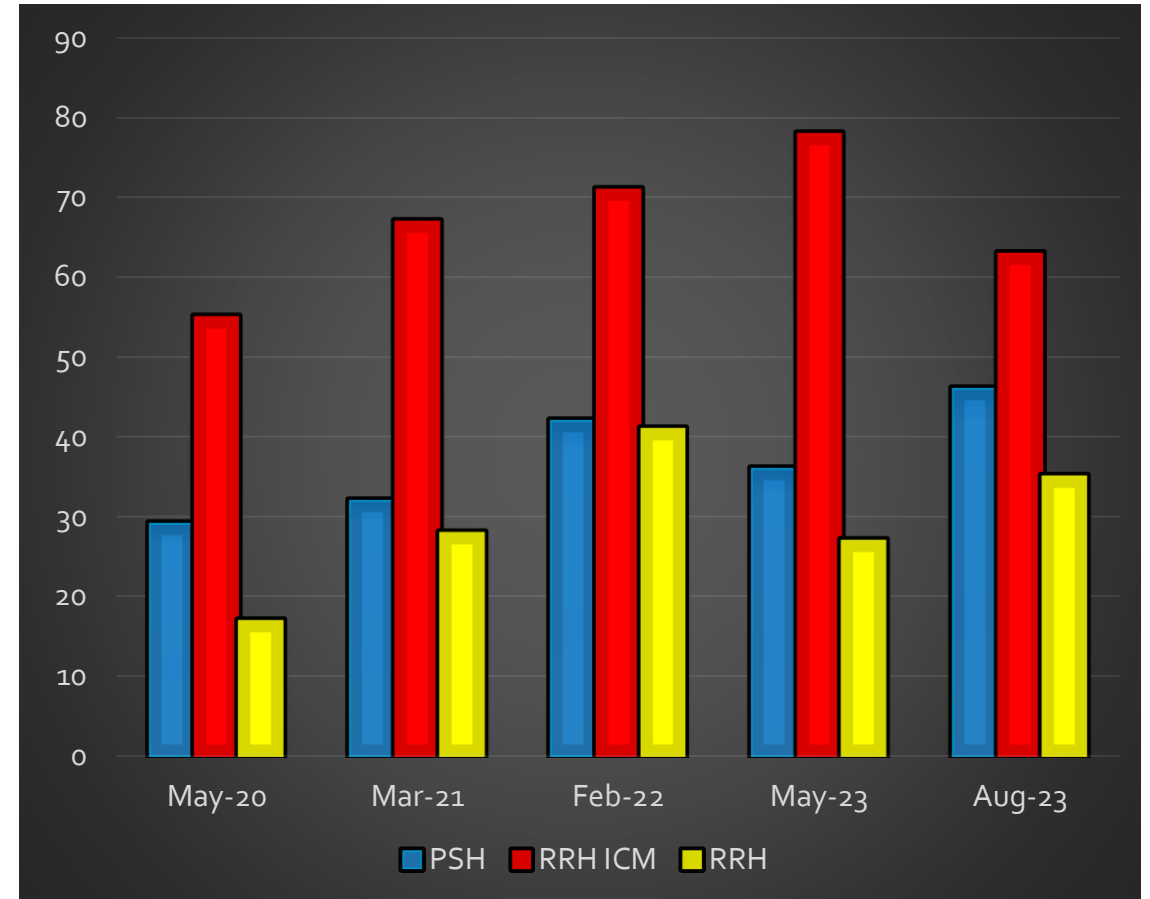
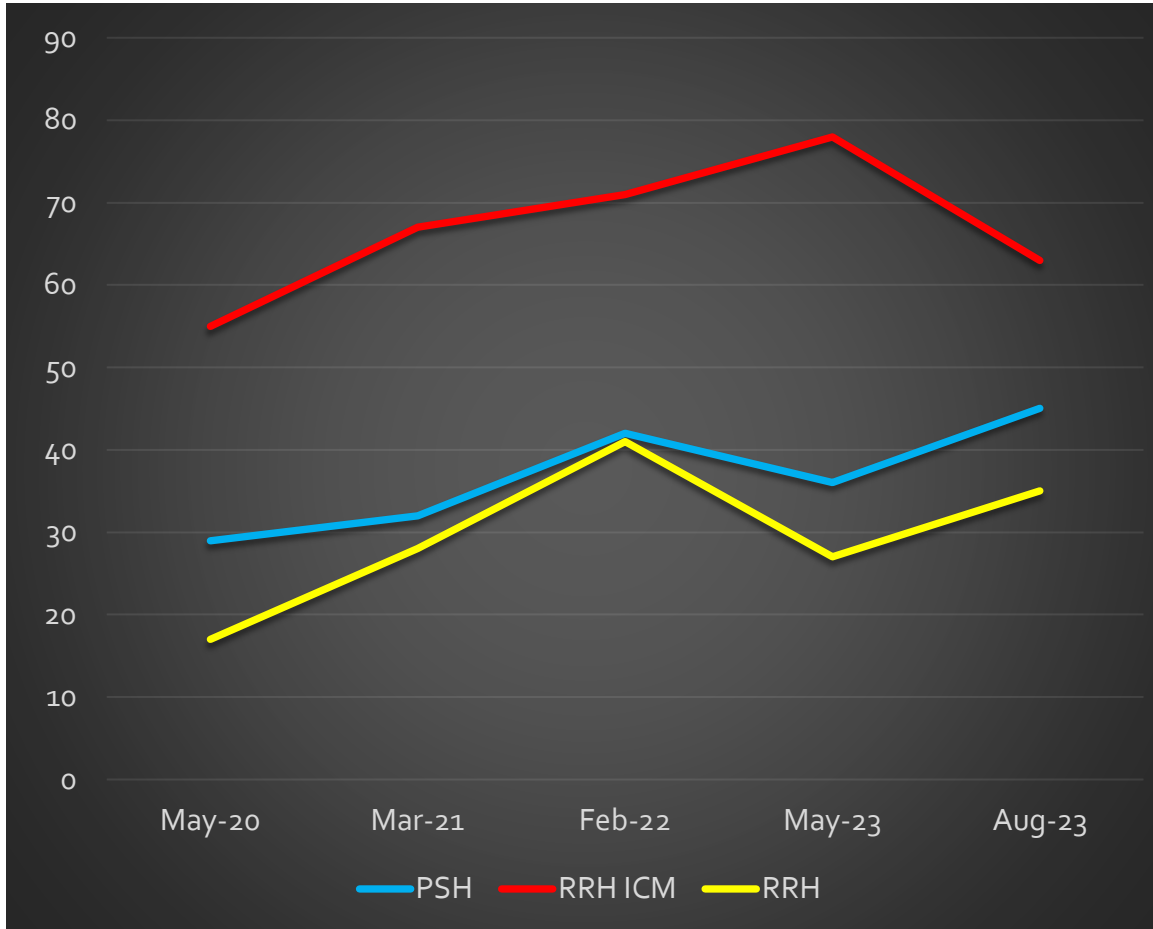


# Total Permanent Housing Solutions Needed



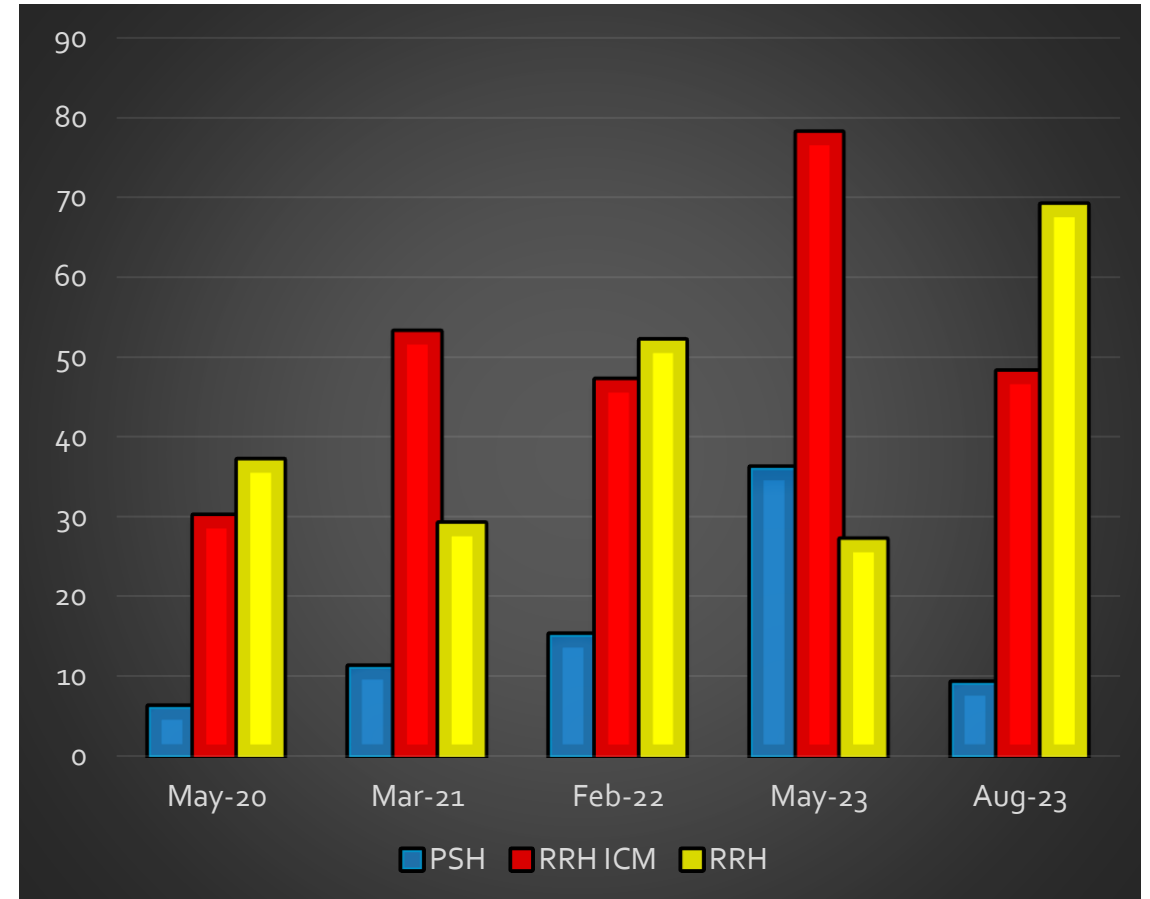
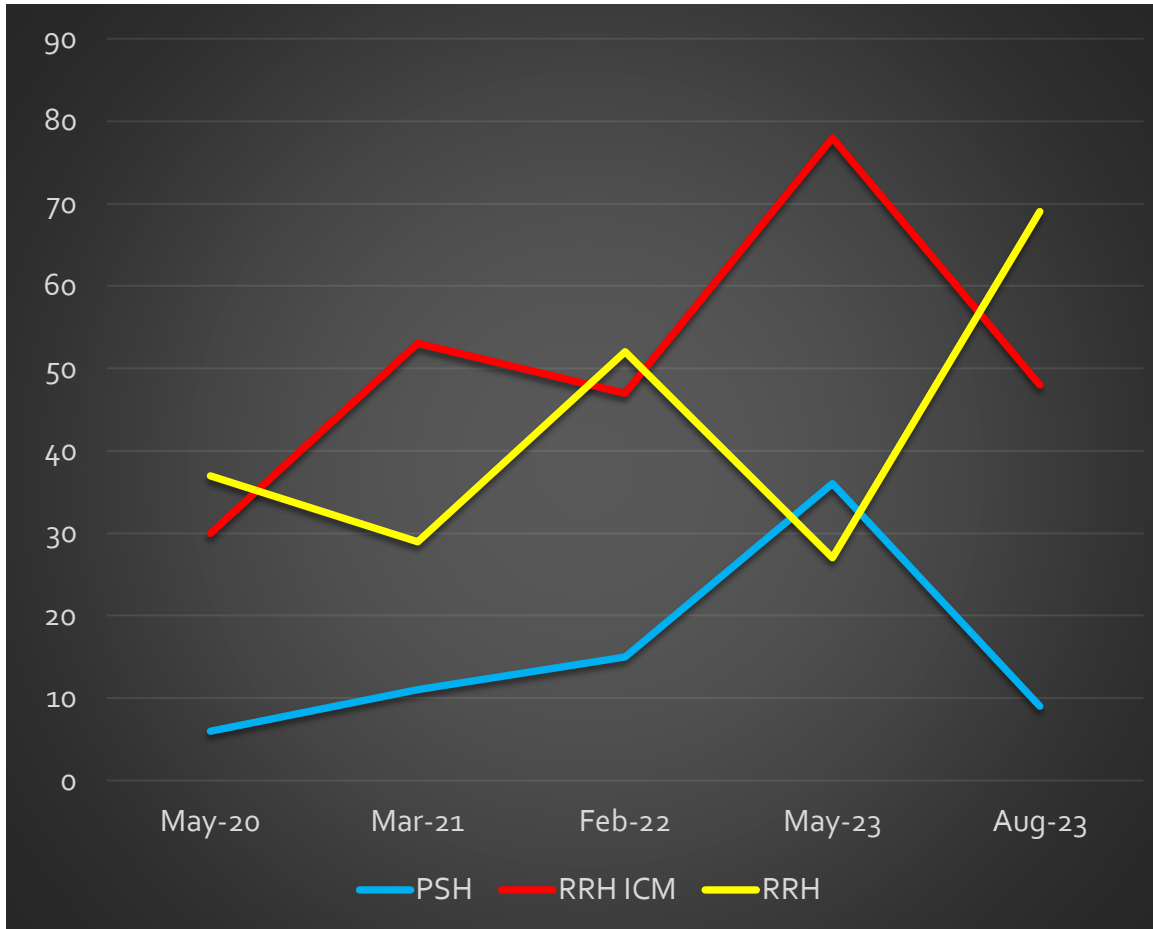
Balance of State CE Data– as of 8/7/23

# Survivors of DV (Households without children) – Permanent Housing Solutions Needed



Balance of State CE Data – as of 8/7/23

# Survivors of DV (Households with children) – Permanent Housing Solutions Needed



Balance of State CE Data – as of 8/7/23

# Coordinated Entry – HMIS Prioritization



Coalition	HH w/out kids	HH w/kids	Total HH Aug 2023	Total HH May 2023	Average # days on list HH w/o	Average # days on list HH w
Brown	157	129	286	340	137.2	78.4
Central	47	36	83	111	49.6	54.9
Coulee	204	50	254	280	244.2	93.9
Dairyland	181	45	226	256	144.5	57.4
East Central	51	13	64	77	74.4	44.8
Fox Cities	185	60	245	237	100.3	86.3
Jefferson	37	24	61	54	106.5	97.7
Kenosha	83	44	127	121	69.8	77.3
Lakeshore	87	40	127	97	77.4	75.1
North Central	95	20	115	107	110	105.5
NE/NWISH	56	48	104	133	73.1	71.9
Northwest	83	40	123	99	96.1	79.7

Coalition	HH w/out kids	HH w/kids	Total HH Aug 2023	Total HH May 2023	Average # days on list HH w/o	Average # days on list HH w
Ozaukee	28	23	51	37	49.7	77.4
Rock-Walworth	121	81	202	157	108.2	101.7
Rural North	53	23	76	86	92.3	87.1
Southwest	32	17	49	47	65.3	64.8
Washington	66	33	99	62	117.2	89.1
Waukesha	152	38	190	213	217.6	89.3
West Central	167	49	216	232	105.5	82.7
Winnebago-land	154	57	211	206	144.8	93.3
TOTAL			2,909	2,952		

# Coordinated Entry – HMIS Prioritization



Coalition	Vet HH	CH HH	DV HH	Youth HH	Senior HH
Brown	0	25	57	25	33
Central	1	10	16	6	6
Coulee	10	98	47	14	35
Dairyland	14	53	35	18	40
East Central	3	15	10	3	8
Fox Cities	9	31	32	12	50
Jefferson	0	9	16	3	3
Kenosha	1	16	27	16	16
Lakeshore	3	12	30	13	16
North Central	0	30	25	7	10
NE/NWISH	0	10	29	4	7
Northwest	8	34	33	6	26

Coalition	Vet HH	CH HH	DV HH	Youth HH	Senior HH
Ozaukee	2	5	16	3	5
Rock-Walworth	3	20	36	22	32
Rural North	0	13	19	5	7
Southwest	0	7	14	4	4
Washington	4	11	19	15	14
Waukesha	3	32	22	20	35
West Central	12	42	37	4	36
Winnebago-land	7	31	29	18	35

# Coordinated Entry – Non HMIS Prioritization



Coalition	HH w/out kids	HH w/kids	Total HH	Compare (Feb 2023)
Brown	49	57	106	108
Central	15	43	58	37
Coulee	1	1	2	2
Dairyland	24	51	75	40
East Central	1	4	5	5
Fox Cities	40	51	91	76
Jefferson	2	2	4	5
Kenosha	36	8	44	31
Lakeshore	6	20	26	26
North Central	7	11	18	19
NE/NWISH	6	5	11	14
Northwest	1	2	3	5

Coalition	HH w/out kids	HH w/kids	Total HH	Compare (Feb 2023)
Ozaukee	4	2	6	7
Rock-Walworth	8	10	18	16
Rural North	0	1	1	6
Southwest	0	2	2	3
Washington	16	15	31	29
Waukesha	5	4	9	11
West Central	13	9	22	36
WinnebagoLand	34	53	87	64
<b>TOTAL</b>	<b>268</b>	<b>351</b>	<b>619</b>	<b>540</b>

	Feb 2019	Feb 2020	Feb 2021	Feb 2022	May 2022	Aug 2022	Nov 2022	Feb 2023	May 2023
<b>Total</b>	<b>236</b>	<b>310</b>	<b>344</b>	<b>600</b>	<b>586</b>	<b>706</b>	<b>465</b>	<b>540</b>	<b>619</b>

Non-HMIS Prioritization List as of 5/19/2023

A solid blue vertical bar is positioned on the left side of the slide, extending from the top to the bottom.

# **DATA & COC COMPETITION**

# Elements Used in the CoC Competition



Reduce the Number of  
People Experiencing  
Homelessness



Reduce the Number of  
First Time Homeless



Reduce the Length of  
Time Homeless



Increase Successful  
Permanent Housing  
Placement or Retention



Decrease Returns to  
Homelessness



Increase Jobs & Growth



# Reduce the Number of People Experiencing Homelessness



Element	2023	2022	Percentage Change
Decrease by 5% - Sheltered in PIT between 2023 and 2022	2672	2854	6.4% decrease
Decrease by 5% - Unsheltered in PIT between 2023 and 2022	268	195	37.4% increase
Decrease by 5% combined Sheltered & Unsheltered in PIT between 2023 and 2022	2940	3049	3.6% decrease



# Reduce the Number of First Time Homeless



Element	2022	2021	Percentage Change
Reduction Between FY21 and FY 22	7305	7202	1.4% increase



# Reduce the Length of Time Homeless

Element	2022	2021	Percentage Change
Decrease by 5% - between FY21 and FY 22	56	51	9.8% increase



# Increase Successful Permanent Housing Placement or Retention

Element	2022	2021	Percentage Change
Increase by 2% <b>OR</b> that the PH destinations were 50% or higher for ES, TH, RRH between FY21 and FY 22	31%	35%	4% decrease
Increase by 1% <b>OR</b> that the PH destinations were 96% or higher for PSH between FY21 and FY 22	95%	95%	No change



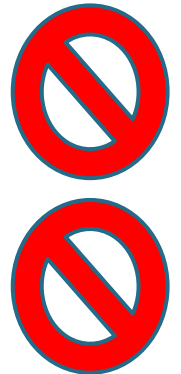
# Decrease Returns to Homelessness

Element	2022	2021	Percentage Change
Decrease between FY21 and FY22 the returns within 6 months by at least 1% <b>OR</b> that the rate of return was 5% or less	9%	12%	3% decrease
Decrease between FY21 and FY22 the returns within 12 months by at least 1% <b>OR</b> that the rate of return was 10% or less	15%	16%	1% decrease



# Increase Jobs & Income Growth

Element	2022	2021	Percentage Change
Increase employment income between FY21 and FY22 <b>OR</b> that the rate was 20% or more	13%	15%	2% decrease
Increase non-employment income between FY21 and FY22 <b>OR</b> that the rate was 50% or more	15%	20%	5% decrease



# Contact Information



Carrie Poser

CoC Director

Wisconsin Balance of State CoC

[carrie.poser@wibos.org](mailto:carrie.poser@wibos.org)

PO Box 272, Eau Claire, WI 54702

Phone: 715-598-3301

Website: [www.wiboscoc.org](http://www.wiboscoc.org)