

ENDING HOMELESSNESS & COORDINATED ENTRY

Carrie Poser

CoC Director, WI Balance of State CoC

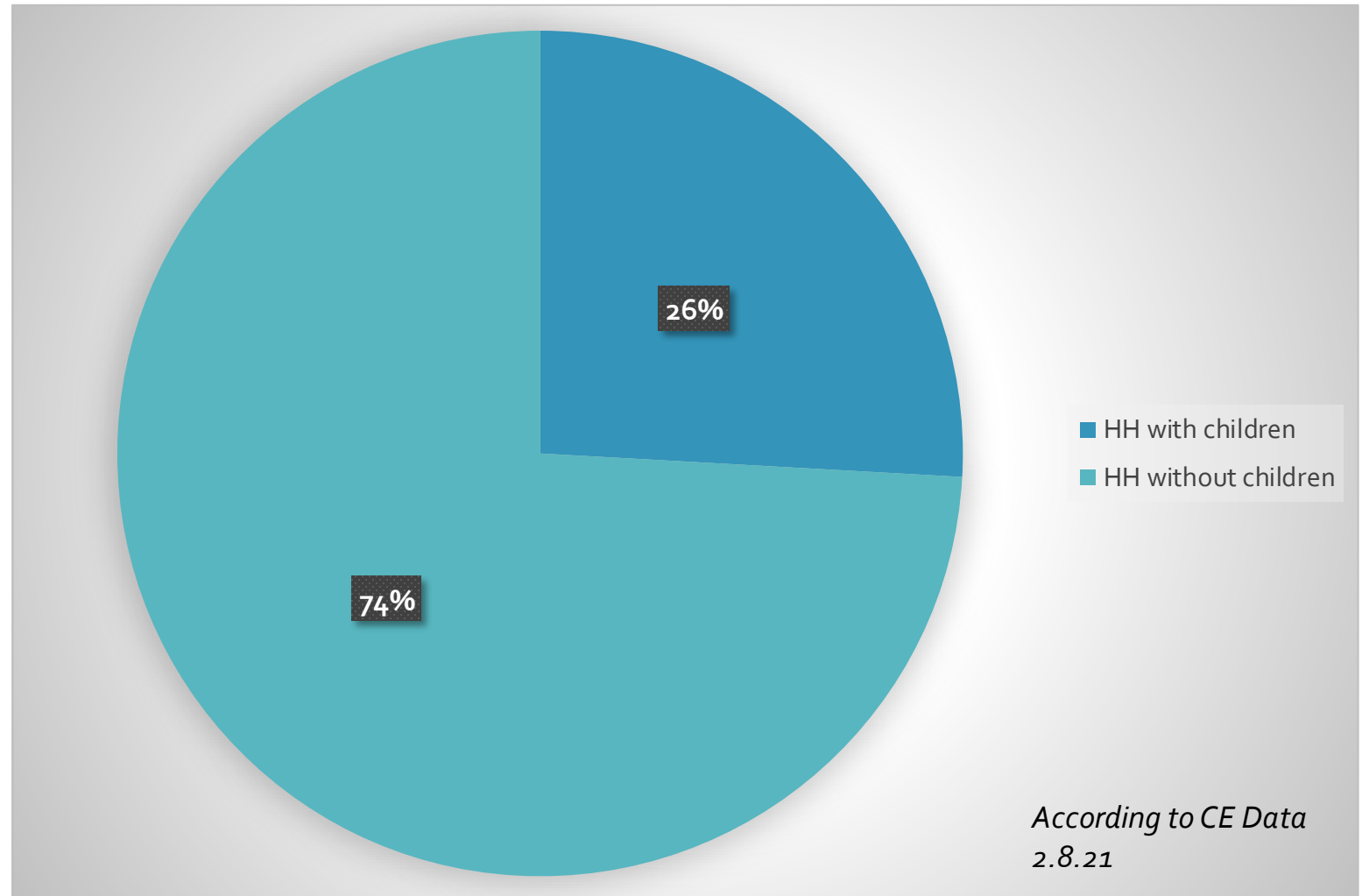
February 2021

Homelessness by Household Type



	May 2018	July 2019	Nov 2019	Feb 2020
HH w/out	1,777 66%	1,960 73%	2,051 71%	2,093 74%
HH with	898 34%	717 27%	858 29%	722 26%

	May 2020	Aug 2020	Nov 2020	Feb 2021
HH w/out	1,356 76%	1,297 72%	1344 72%	1360 74%
HH with	433 24%	500 28%	528 28%	475 26%



Balance of State CoC - Coordinated Entry Data



HH without Children	PL
Currently waiting on PL	1,360 people
Chronic Homeless	310 people
Veterans	53 people
Youth 18-24	90 people
Average LOT on list	134.5 days
Longest LOTH	1,266 days
Fleeing DV (HMIS)	113 people

HH without Children	#
Accepted off List	2,220 people
Removed from List	10,516 people

Total clients ever referred: 13,435

Since November 2020:
 Increase from 1,344 to 1,360
 Increase average days 123.5 to 134.5
 Decrease people fleeing DV 133 to 113
 Increase self resolve 5,504 to 6,415
 Increase people who died 65 to 68

Top Reasons Removed	#
Found housing on own	6,415
Unable to contact	6,468
Asked to be removed	692
Death	68

HH with Children	PL
Currently waiting on PL	475 families
Chronic Homeless	41 people
Veterans	4 people
Average LOT on list	150.2 days
Longest LOTH	951 days
Fleeing DV (HMIS)	140 families

HH with Children	#
Accepted off List	2,509 families
Removed from List	6,443 families

Total families ever referred: 9,606

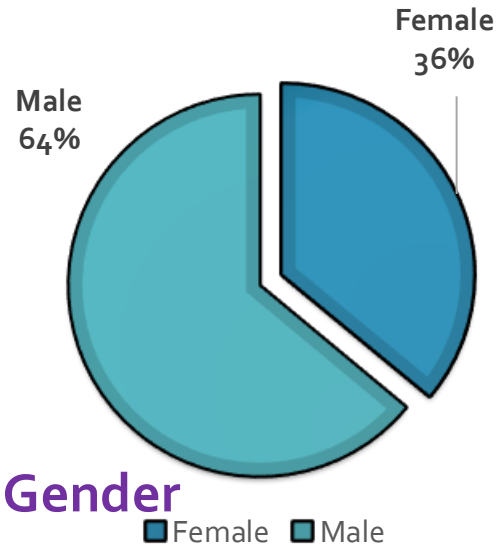
Since November 2020:
 Decrease from 528 to 475
 Decrease in chronic homelessness 55 to 41
 Increase average days 131.6 to 150.2
 Decrease people fleeing DV 178 to 140

Top Reasons Removed	#
Found housing on own	2,779
Unable to contact	2,162
Asked to be removed	325
Death	4

Why is # of reasons greater than # removed?

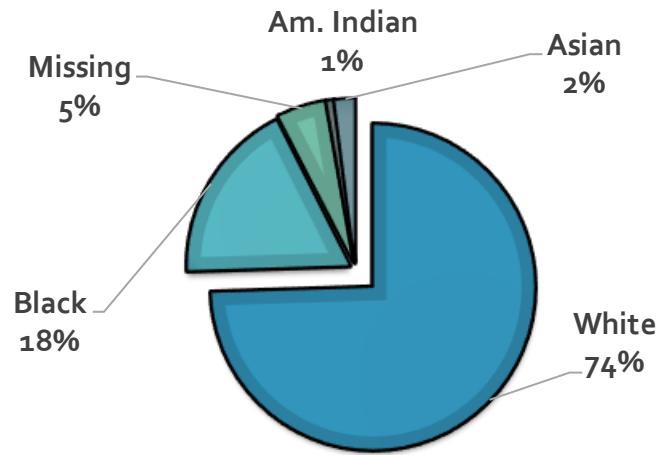
Because a client can be removed more than once for more than 1 reason.

Households without Children – Current Clients on Prioritization List



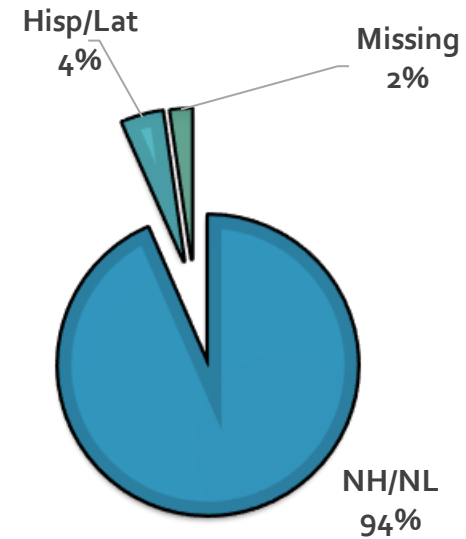
Gender

■ Female ■ Male



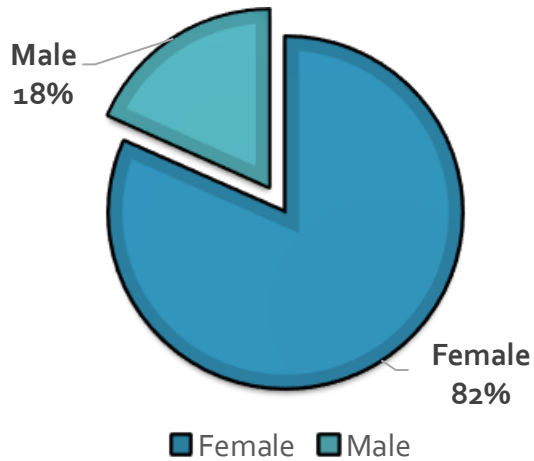
Race

■ White ■ Black
 ■ Missing ■ Am. Indian
 ■ Asian

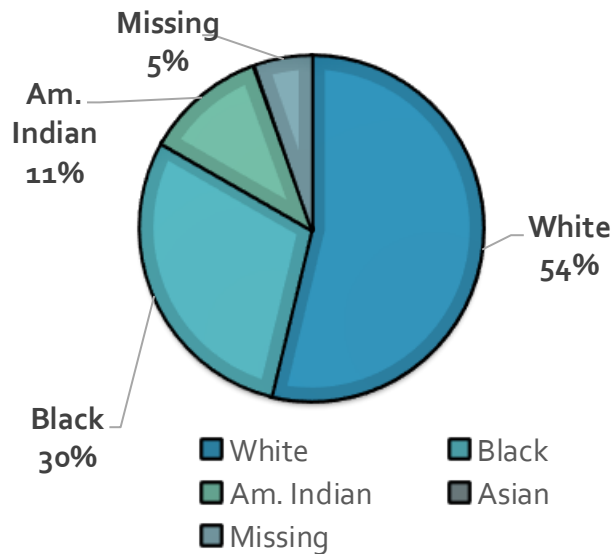


Ethnicity

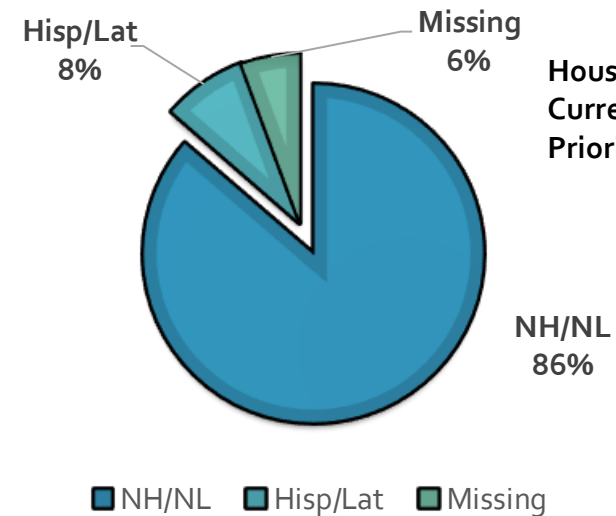
■ NH/NL ■ Hisp/Lat ■ Missing



■ Female ■ Male



■ White ■ Black
 ■ Am. Indian ■ Asian
 ■ Missing



■ NH/NL ■ Hisp/Lat ■ Missing

Households with Children – Current Clients on Prioritization List

Definitions



- **CH = Meets Chronic Homeless Definition**
 - Disability
 - Category 1 homeless situation (place not meant for human habitation or shelter)
 - Homeless for 12 consecutive months or 4 times within 3 years that totals 12 months

- **CH – 2nd priority = does not meet chronic homeless definition**
 - Disability
 - Category 1 homeless situation (place not meant for human habitation or shelter)
 - Homeless for 12 non-consecutive months or less than 4 times within 3 years

- **RRH w/ICM (intensive case management) = does not meet chronic homeless definition**
 - Disability, less than 12 months of homelessness AND
 - Without a disability, 12 months or more of homelessness

- **RRH = does not meet chronic homeless definition**
 - Without a disability, less than 12 months of homelessness

Balance of State - Need

HMIS Prioritization List as of 2/8/2021



HH without Children	#	VISPDA T	Average Time on List	# Youth	# fleeing DV	# Veterans
Chronic with disability (more than 12 months homeless)	357	<4 = 5 4-8 = 194 9+ = 153 Missing = 3	5.9 months	20	12	16
Non-Chronic with disability & more than 12 months homeless	154	<4 = 3 4-8 = 94 9+ = 56 Missing = 1	3.7 months	4	13	3
Non-Chronic with disability & less than 12 months homeless or	445	<4 = 14 4-8 = 299 9+ = 129 Missing = 1	3.1 months	25	49	24
Non-Chronic without a disability & more than 12 months homeless	188	<4 = 11 4-8 = 125 9+ = 53 Missing = 1	7.2 months	16	10	2
Non-Chronic without a disability & less than 12 months homeless	281	<4 = 25 4-8 = 207 9+ = 46 Missing = 3	3.1 months	30	21	7
Total:	1,425			95	105	52

Issues:

100 people missing #
months homeless

Also missing VISPDA (7)
Also missing Disability (5)

Balance of State - Need

HMIS Prioritization List as of 2/8/2021



HH with Children	#	VISPDAT	Average Time on List	# Youth	# fleeing DV	# Veterans
Chronic with disability (more than 12 months homeless)	46	<4 = 0 4-8 = 11 9+ = 34 Missing = 1	7.4 months	2	11	0
Non-Chronic with disability & more than 12 months homeless	18	<4 = 0 4-8 = 7 9+ = 11	6.5 months	0	5	0
Non-Chronic with disability & less than 12 months homeless <u>or</u>	131	<4 = 0 4-8 = 54 9+ = 75 Missing = 2	2.9 months	8	37	2
Non-Chronic without a disability & more than 12 months homeless	102	<4 = 0 4-8 = 54 9+ = 47 Missing = 1	8.4 months	19	26	0
Non-Chronic without a disability & less than 12 months homeless	162	<4 = 2 4-8 = 94 9+ = 63 Missing = 3	3.0 months	24	39	2
Total:	459			53	118	4

Issues:
64 people missing #
months homeless

Also missing VISPDAT (9)
Also missing Disability (3)

What does all this mean?

- **Data issues on HMIS prioritization lists** – 100 HH w/out, 64 HH with children
 - Missing # months homeless

- **Realistic look at need at the Balance of State level:** **TOTAL: 2,048 Units**
 - Increase PSH units and/or enhance moving up strategies to free up units
 - HH w/out children (357+154 = 511) HH w/children (46+18 = 64) **Total = 575 units**

 - Increase RRH units with intensive case management (similar to PSH level if needed)
 - HH w/out children (633) HH w/children (233) **Total = 866 units**

 - Focus other RRH units on lower barrier (less than 12 mo of homeless, no disability)
 - HH w/out children (281) HH w/children (162) **Total = 443 units**

 - People missing # months of homeless, not prioritized
 - HH w/out children (100) HH w/children (64) **Total = 164 units**

Looking at Subpopulations

	Youth	Fleeing DV	Veterans	Total
PSH level	24+2 = 26	15+16 = 31	19+0 = 19	76
RRH ICM	41+27 = 68	59+63 = 122	26+2 = 28	218
RRH	30+24 = 54	21+39 = 60	7+2 = 9	123
Not Prioritized	6+9 = 15	8+22 = 30	6+0 = 6	51
TOTAL	163	243	62	

TOTAL: 2,048 Units

- Minus Youth units = 163
- Minus DV units = 243
- Minus Vet units = 62

TOTAL: 1,580 Units

PSH Units Total: 575 Units

- Minus Youth units = 26
- Minus DV units = 31
- Minus Vet units = 19

PSH Units Total: 499 Units

RRH ICM Units Total: 866 Units

- Minus Youth units = 68
- Minus DV units = 122
- Minus Vet units = 28

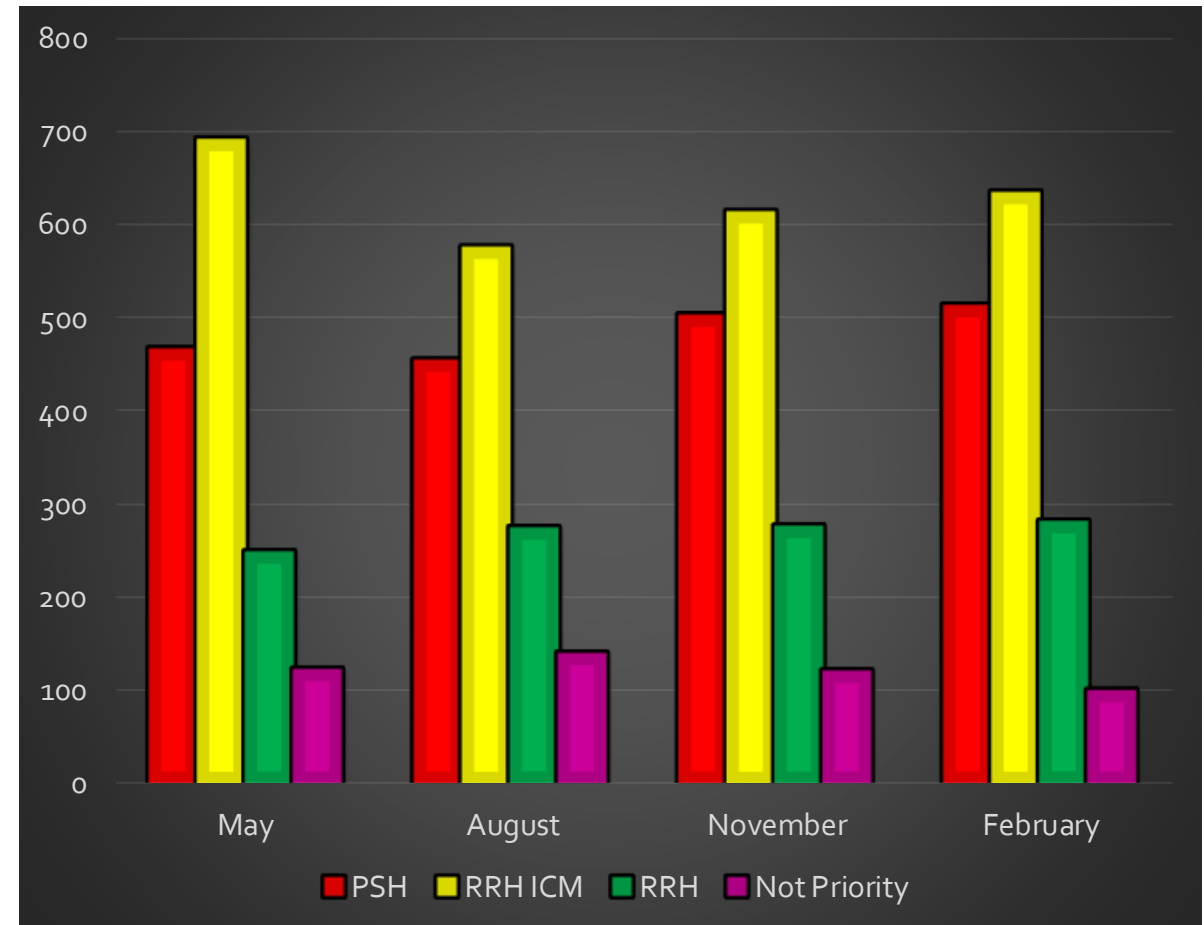
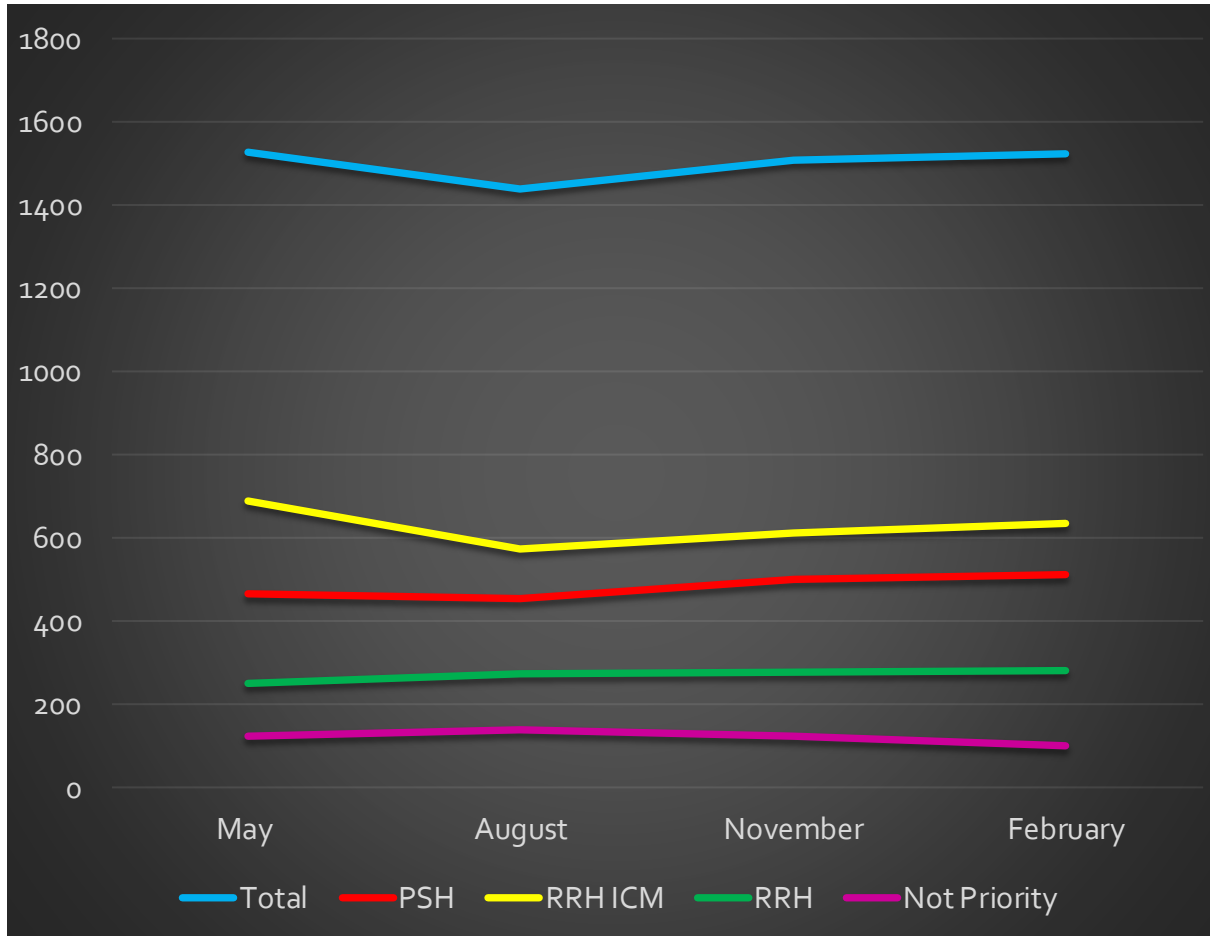
RRH ICM Units Total: 648 Units

RRH Units Total: 443 Units

- Minus Youth units = 54
- Minus DV units = 60
- Minus Vet units = 9

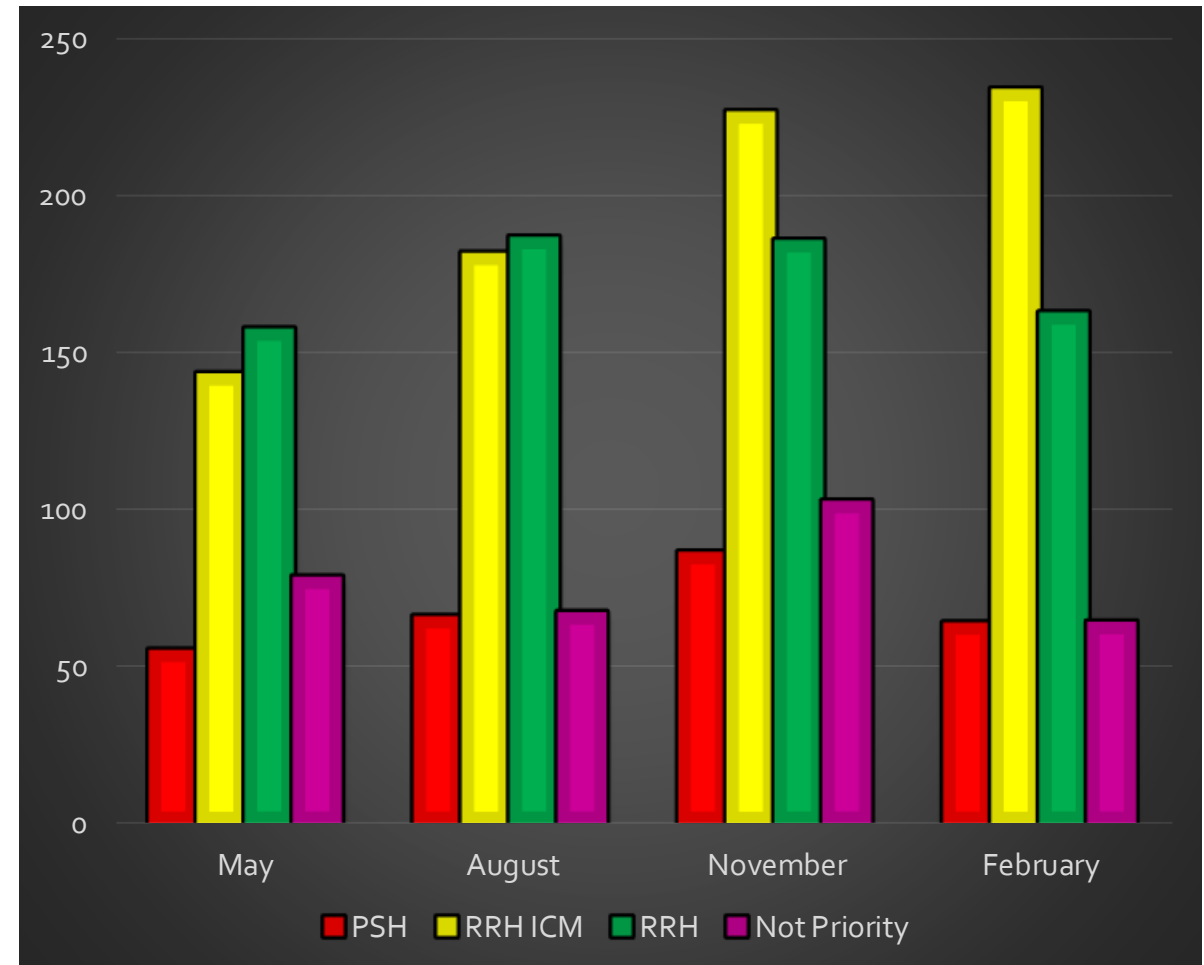
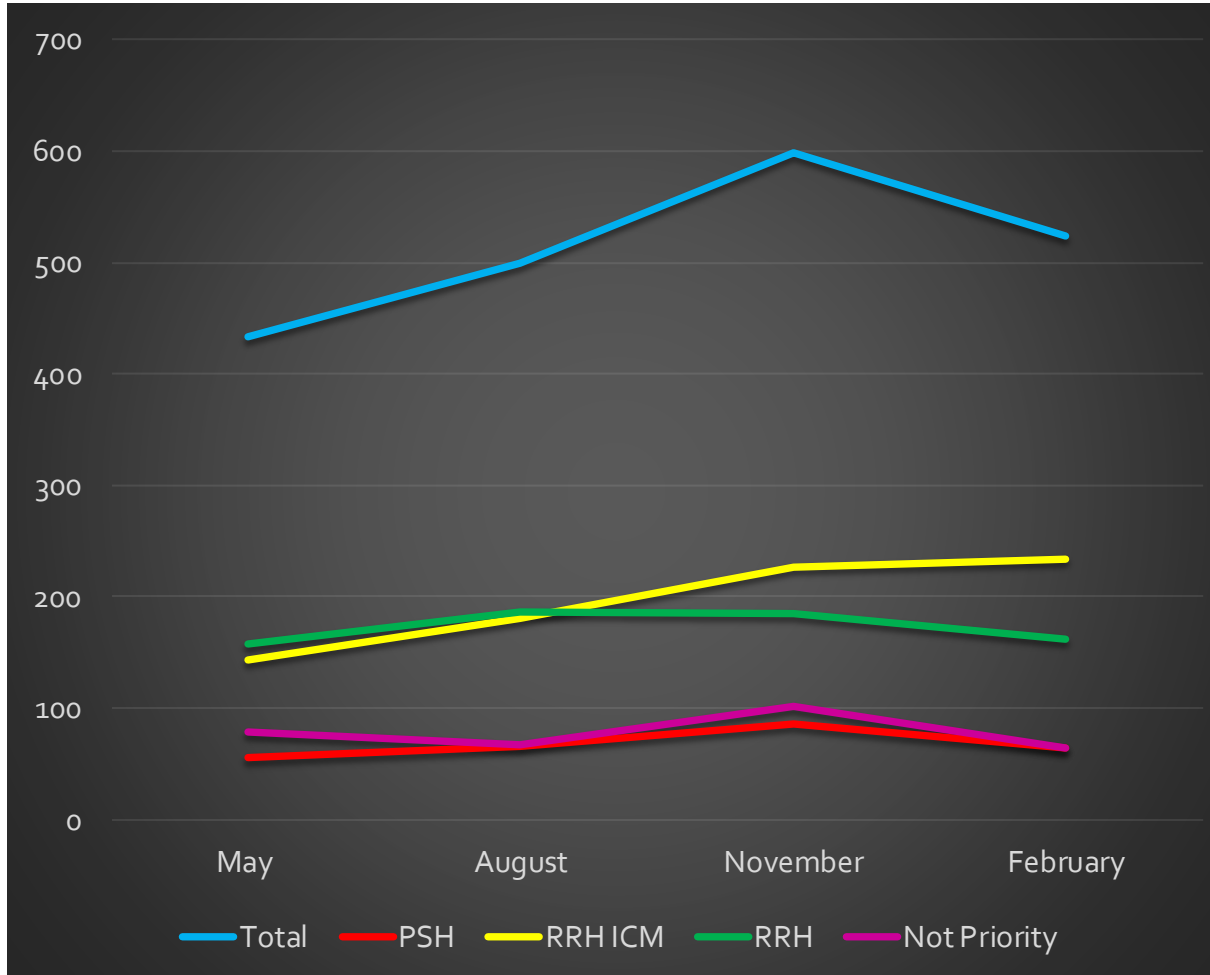
RRH Units Total: 320 Units

Households without Children – Units Needed



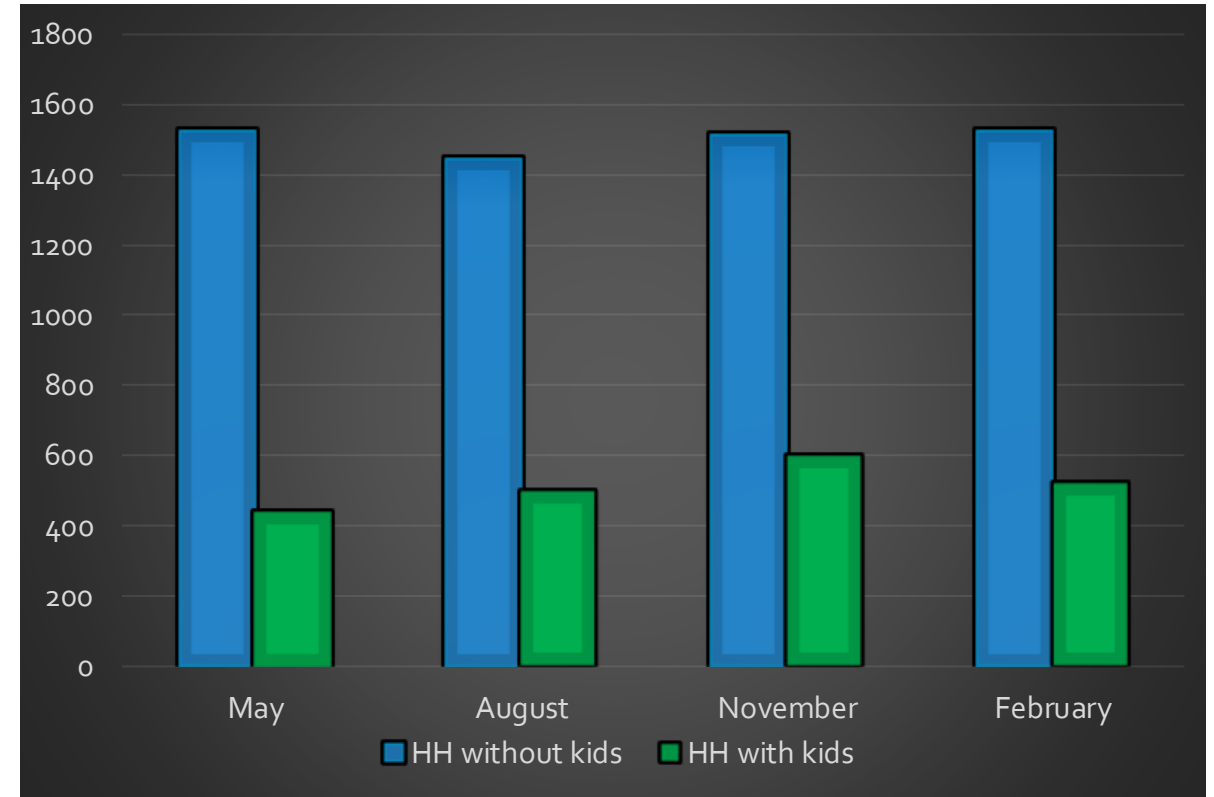
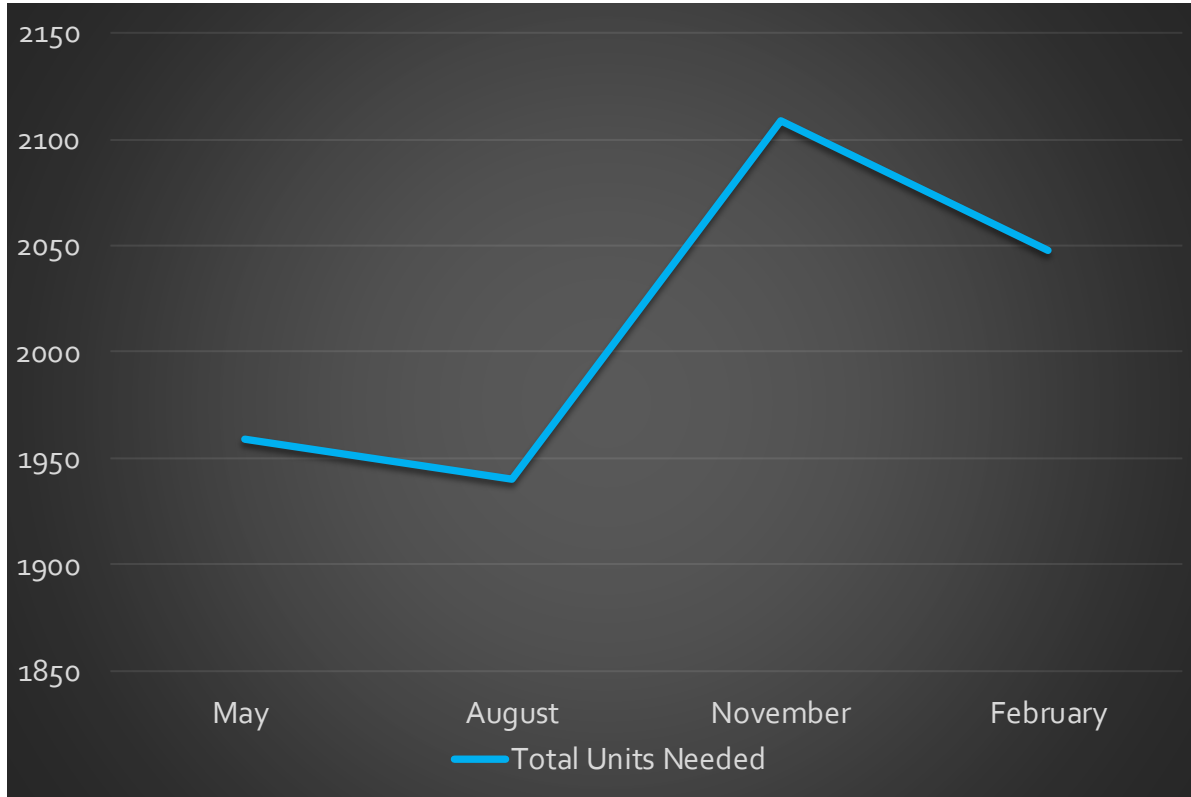
Balance of State CE Data 2.8.2021

Households with Children – Units Needed



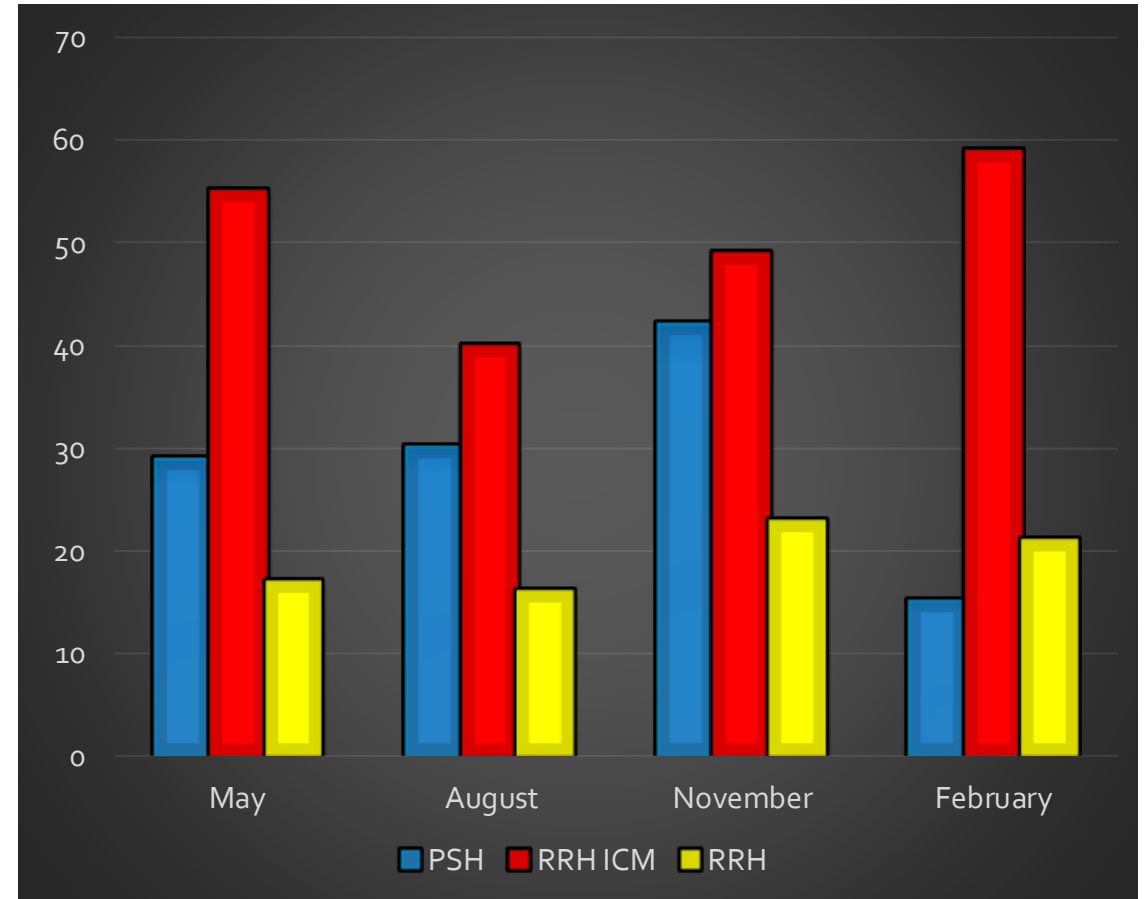
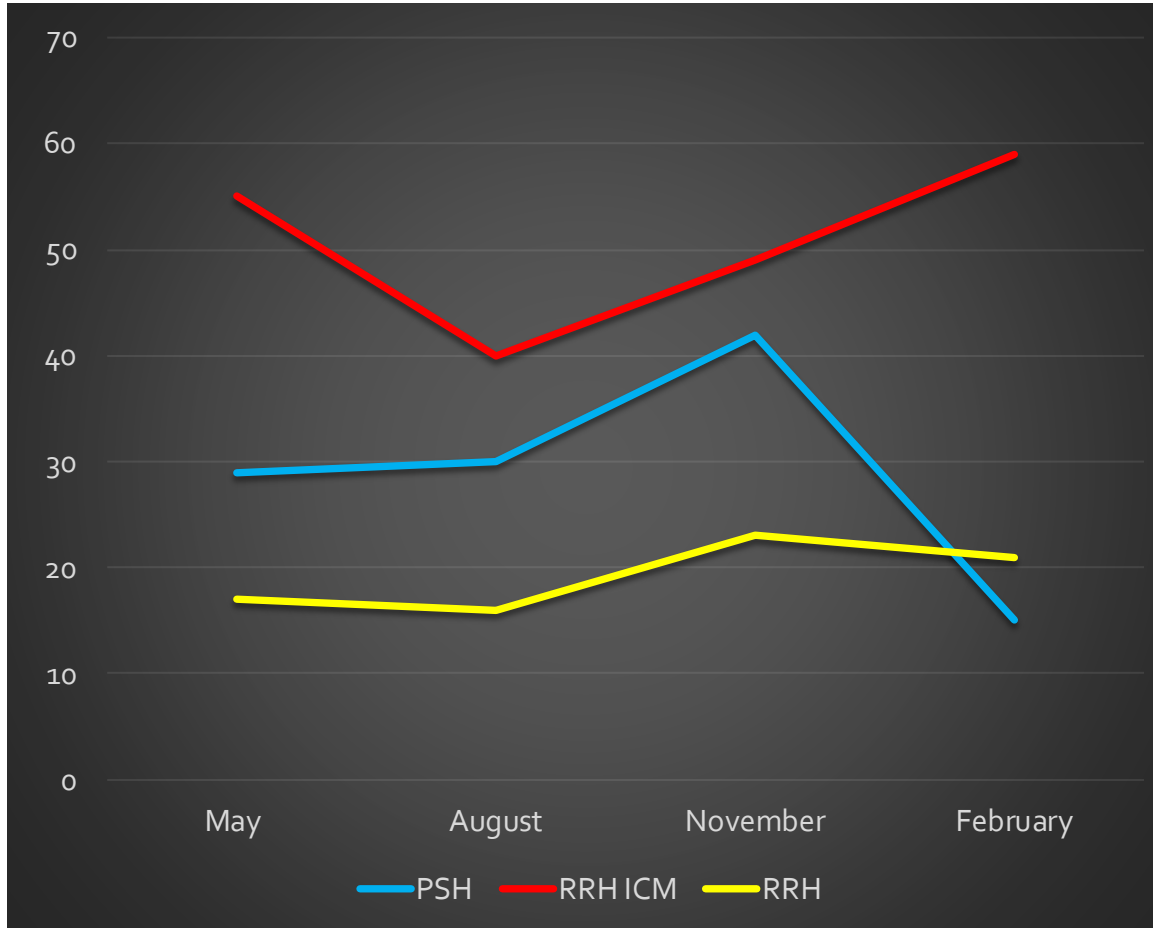
Balance of State CE Data 2.8.2021

Total Units Needed



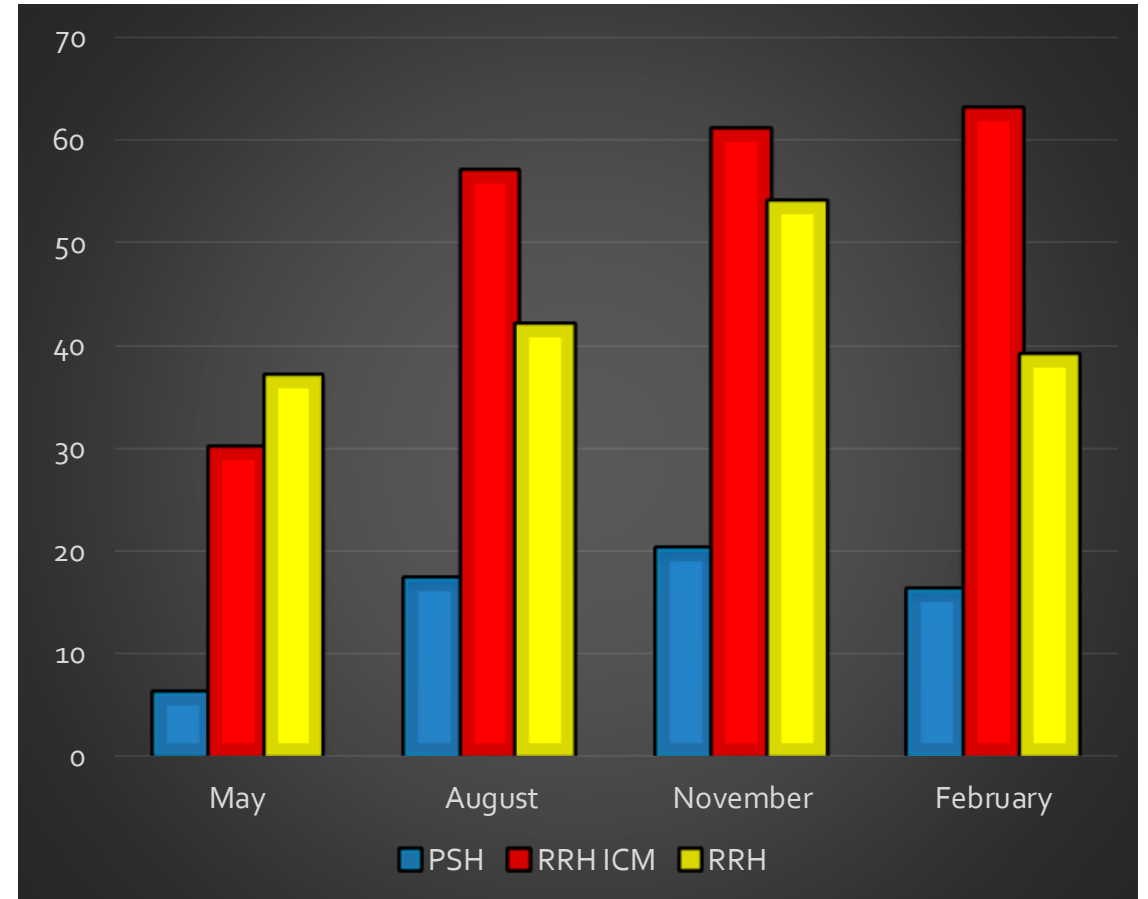
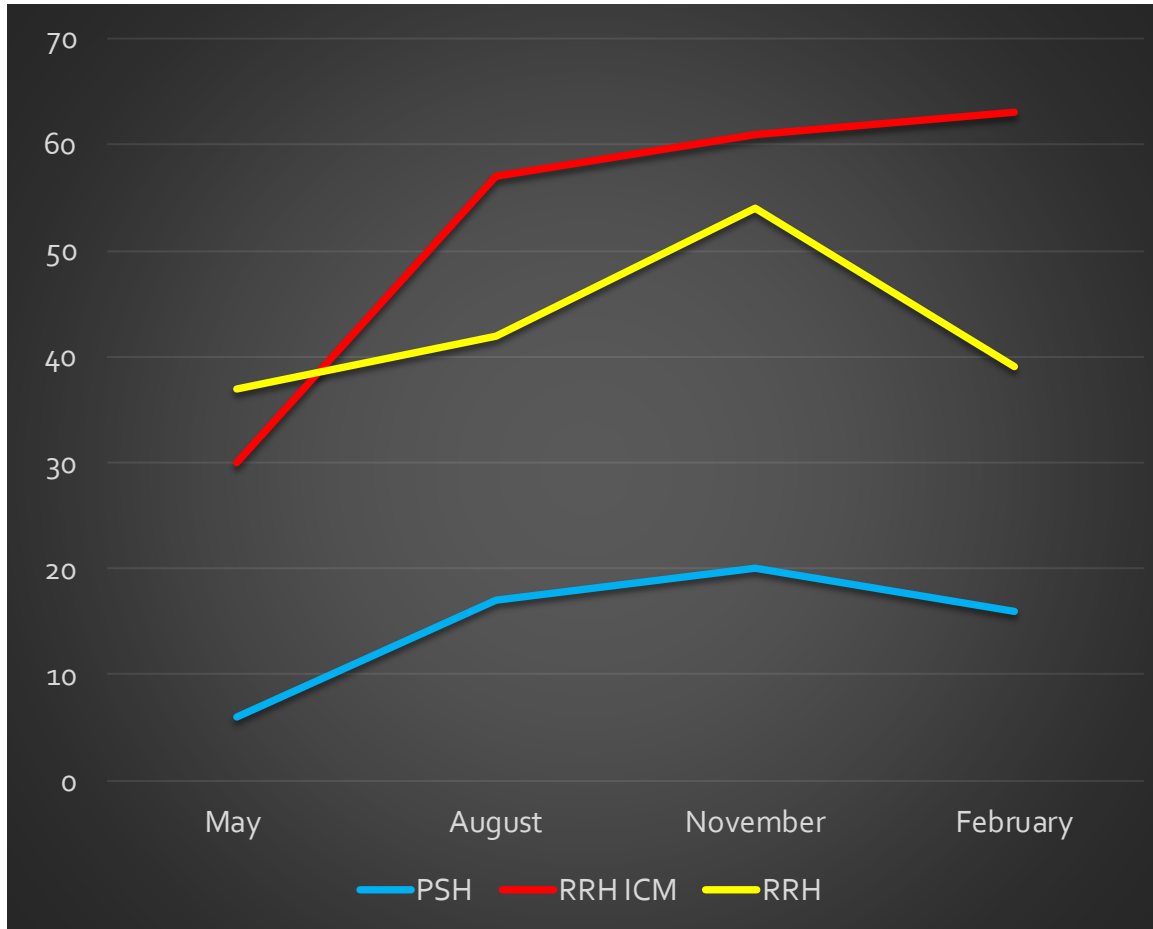
Balance of State CE Data 2.8.2021

Survivors of DV (HH w/out) – Units Needed



Balance of State CE Data 2.8.2021

Survivors of DV (HH w/kids) – Units Needed



Balance of State CE Data 2.8.2021

Coordinated Entry – HMIS Prioritization



Coalition	HH w/out kids	HH w/kids	Total HH	Av. On list (HH w.out)	Av. On list (HH with)
Brown	161	64	225	140.8	88.8
Central	29	10	39	57.9	72.9
Coulee	165	24	189	148.6	93.3
Dairyland	120	31	151	132.7	84.2
East Central	80	4	84	185.7	56.5
Fox Cities	105	12	117	91.9	32.1
Jefferson	20	10	30	73.2	35.6
Kenosha	43	12	55	82.5	78.2
Lakeshore	35	21	56	85	94.1
North Central	56	2	58	87.1	5
NE/NWISH	39	30	69	111.8	170.8
Northwest	30	18	48	95.1	58.6

Coalition	HH w/out kids	HH w/kids	Total HH	Av. On list (HH w.out)	Av. On list (HH with)
Ozaukee	8	1	9	82	28
Rock-Walworth	134	135	269	104.5	93.9
Rural North	16	10	26	104.5	93.9
Southwest	35	10	45	84.4	42.8
Washington	39	5	44	177.3	105
Waukesha	137	21	158	167	73
West Central	177	39	216	112.3	91.6
Winnebago-land	73	38	111	113	86
TOTAL	1,352	477	1,829		

Coordinated Entry – HMIS Prioritization



Coalition	Vet HH	CH HH	DV HH	Youth HH
Brown	6	37	25	11
Central	1	1	2	4
Coulee	7	44	12	9
Dairyland	6	39	15	11
East Central	2	8	2	7
Fox Cities	4	24	5	4
Jefferson	3	4	3	0
Kenosha	2	10	3	3
Lakeshore	0	10	8	5
North Central	1	34	3	9
NE/NWISH	0	9	15	7
Northwest	2	7	11	1

Coalition	Vet HH	CH HH	DV HH	Youth HH
Ozaukee	0	0	2	1
Rock-Walworth	5	36	63	43
Rural North	0	4	4	3
Southwest	1	7	2	2
Washington	1	7	4	3
Waukesha	8	51	18	5
West Central	9	51	24	19
Winnebago-land	2	9	27	7
TOTAL				

Most/Longest



	Aug 2020	Nov 2020	Feb 2021
Most HH	RockWalworth (279) Brown (237) West Central (233)	RockWalworth (296) West Central (270) Brown (267)	RockWalworth (269) Brown (225) West Central (216)
Longest Av. time on list HH w/out kids	Coulee (222) Waukesha (219) Dairyland (183)	RockWalworth (201) Southwest (163) North Central (163)	RockWalworth (218) East Central (186) Washington (177)
Longest Av. time on list HH w/kids	RockWalworth (212) Waukesha (132) NE/NWISH (123)	RockWalworth (259) Brown (125) NE/NWISH (111)	RockWalworth (324) NE/NWISH (171) Lakeshore (94)
Most Veterans	West Central (12) RockWalworth (12) Waukesha (8)	West Central (12) RockWalworth (11) Dairyland (8) Brown (8)	West Central (9) Waukesha (8) Dairyland (6) Brown (6)
Most Chronic Homeless	RockWalworth (64) Waukesha (57) Brown (54)	Brown (69) West Central (55) RockWalworth (52)	West Central (51) Waukesha (51) Coulee (44)
Most Domestic Violence Survivors	RockWalworth (73) Brown (30) West Central (26)	RockWalworth (78) WinnebagoLand (40) Brown (37)	RockWalworth (63) WinnebagoLand (27) Brown (25)
Most Youth	RockWalworth (40) West Central (21) Brown (20)	RockWalworth (47) West Central (27) Brown (20)	RockWalworth (43) West Central (19) Brown (11) Dairyland (11)

Coordinated Entry – Non HMIS Prioritization



Coalition	HH w/out kids	HH w/kids	Total HH	Compare (11/2020)
Brown	33	116	149	150
Central	10	8	18	29
Coulee	0	0	0	1
Dairyland	3	23	26	23
East Central	2	7	9	8
Fox Cities	12	5	17	18
Jefferson	1	0	1	1
Kenosha	12	4	16	7
Lakeshore	16	8	24	21
North Central	9	4	13	9
NE/NWISH	0	0	0	4
Northwest	0	0	0	0

Coalition	HH w/out kids	HH w/kids	Total HH	Compare (11/2020)
Ozaukee	4	0	4	3
Rock-Walworth	13	14	27	26
Rural North	0	0	0	0
Southwest	1	0	1	1
Washington	3	7	10	8
Waukesha	0	0	0	0
West Central	2	6	8	4
WinnebagoLand	12	9	21	18
TOTAL	133	211	344	331

	Feb 2019	May 2019	Aug 2019	Nov 2019	Feb 2020	May 2020	Aug 2020	Nov 2020	Feb 2021
Total	236	285	250	296	310	265	291	331	344

Right Sizing

- Do you have the right projects in your coalition?
- Do you have the right funding for those projects?
- Landlord recruitment and education, housing navigation
- Looking beyond VI-SPDAT scores, focusing on level of need and match it with project type
 - What does your current need tell you about what resources or tools need to be changed?
 - PSH level – ongoing, longer term assistance to address mental health and AODA
 - RRH ICM – more intense, flexible case management
 - RRH – light touch case management
- Non-HUD funding ideas & options
 - CoC funding is just one tool in the toolbox. It cannot end homelessness by itself.

Areas to Address

- Clean Up Lists – Do Follow Up
- How has marketing to those seeking services & those referring others for service changed since COVID?
- What other organizations need to be involved in referrals to coordinated entry?
 - Social Services, Housing Authorities, School Districts, Law Enforcement
- Case managing the list – helping people to self resolve
- Prevention – targeting prevention services
- Diversion – create standardized diversion (problem-solving conversations) at each emergency shelter
- After Hour Plan – revisit and revise to ensure that anyone found after hours has access to coordinated entry and reasonable emergency services

SYSTEM PERFORMANCE MEASURES

Definitions



- **System Performance – Reoccurrence**

- The report calculates any successful exit from a street outreach (SO), emergency shelter/motel voucher (ES), transitional housing (TH), or permanent housing (PH) project. PH includes rapid re-housing and permanent supportive housing.
- Success is defined by HUD as a permanent housing-based destination. This can include staying with friends or family permanently, renting an apartment (with or without a subsidy), or purchasing a home.
- Reoccurrence is calculated when a person enters an emergency shelter or motel voucher program in WI that uses HMIS within 2 years after the successful exit.

- **0555 – Reoccurrence**

- The report calculates all exits from all project types.
- Reoccurrence is calculated when a person enters an emergency shelter or motel voucher program in WI that uses HMIS within 2 years of the project exit.

SPM Measure #2: Reoccurrence (after PH exit)



Returns: 10/1/2018 – 9/30/2020

	Total Number of Persons who Exited to Permanent Housing Destination (2 Years)	Number Returning to Homelessness in Less than 6 Months (0-180 days)	Percentage of Returns in Less than 6 Months (0-180 days)	Number Returning to Homelessness from 6 to 12 Months (181-365 days)	Percentage of Returns from 6 to 12 Months (181-365 days)	Number Returning to Homelessness from 13 to 24 Months (366-730 days)	Percentage of Returns from 13 to 24 Months (366-730 days)	Number of Returns in 2 Years	Percentage of Returns in 2 Years
Exits from SO	352	34	9.66%	25	7.10%	11	3.13%	70	19.89%
Exits from ES	4186	795	18.99%	261	6.24%	283	6.76%	1339	31.99%
Exits from TH	457	12	2.63%	24	5.25%	27	5.91%	63	13.79%
Exits from SH	12	1	8.33%	5	41.67%	2	16.67%	8	66.67%
Exits from All PH	1046	56	5.35%	28	2.68%	55	5.26%	139	13.29%
TOTAL Returns	6053	898	14.84%	343	5.67%	378	6.24%	1619	26.75%

	2017-2019	2016-2018	2015-2017	2014-2016
SO	13.45%	11.95%	8.82%	20%
ES	32.79%	31.25%	28.88%	24.27%
TH	15.99%	13.09%	11.32%	12.3%
SH	40%	0%	16.67%	0%
PH	13.52%	10.61%	13.40%	17.09%
Total	26.82%	24.93%	23.61%	20.46%

Questions to consider:

1. Are people truly exiting to permanent destinations? Or is it more temporary?
2. What is happening that results in the return within 2 years?
3. What programmatic changes or supports need to be in place?

Reoccurrence (after any exit)



CoC	10/1/2018 – 9/30/2020
WI Balance of State	46.9%

Gender	All Exits	Returns	% of Returns
Male	24124	12880	53%
Female	17794	6799	38%
Transgender	120	82	68%

HH Type	All Exits	Returns	% of Returns
HH with kids	16095	4216	26%
HH w/out kids	24859	15480	62%

Vet status	All Exits	Returns	% of Returns
Veteran	1005	514	51%
Non-Veteran	16289	9181	56%

Race	All Exits	Returns	% of Returns
American Indian	2688	1353	50%
Asian	503	152	30%
Black or African Am.	9821	4748	48%
Native Hawaiian	143	41	29%
White	28528	13440	47%

10/1/2018– 9/30/2020

Contact Information



Carrie Poser

CoC Director

Wisconsin Balance of State CoC

carrie.poser@wibos.org

PO Box 272, Eau Claire, WI 54702

Phone: 715-598-3301

Website: www.wiboscoc.org