

ENDING HOMELESSNESS – LOOKING AT DATA

Carrie Poser

CoC Director, WI Balance of State CoC

November 2023

POINT-IN-TIME

Point-in-Time – Balance of State CoC



	July 2019	July 2020	July 2021	July 2022	July 2023
ES	1808	--	--	1733	1885
TH	613	--	--	517	550
SH	7	--	--	5	2
UN	355	--	408	557	500
Total	2783	--	--	2813	2937

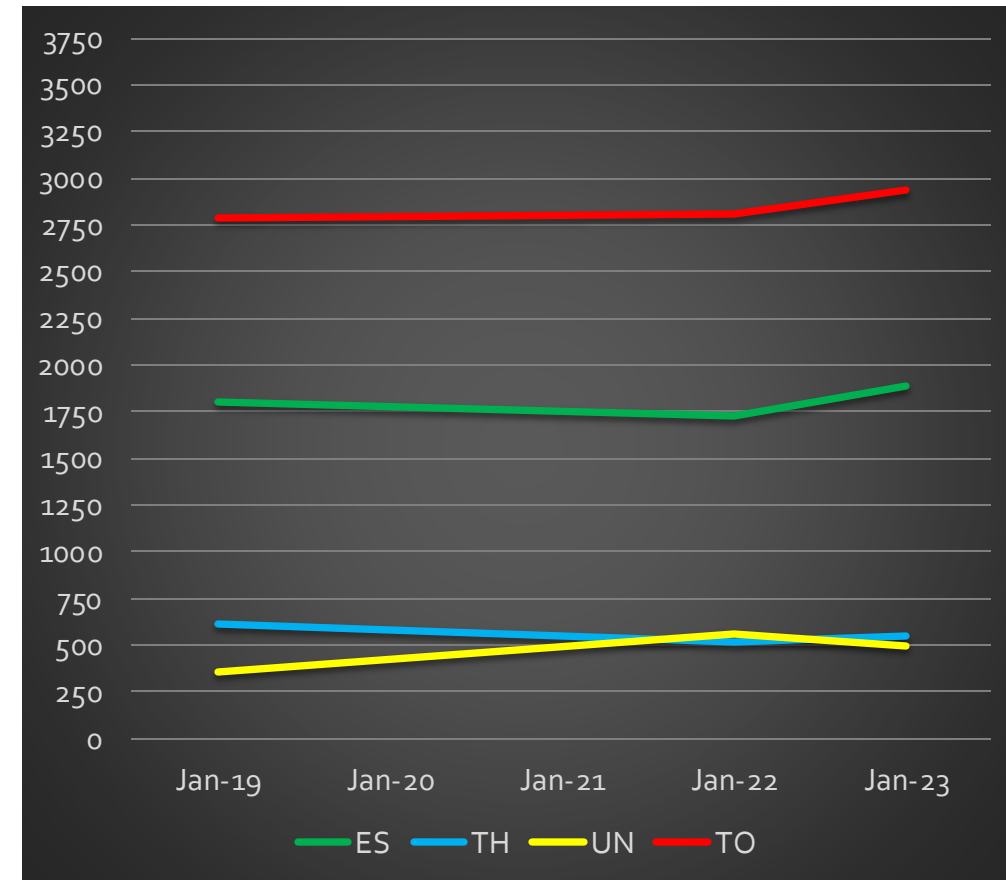
Point-in-Time:

- 4th Wednesday Jan & July
- Includes sheltered & unsheltered, domestic violence providers, non-gov't funded projects
- Snapshot of community
- CoC-wide Outreach activity

ES = Emergency Shelter/Motel Voucher
 TH = Transitional Housing
 SH = Safe Haven
 UN = Unsheltered
 TO = Total

*Note:

There was no organized PIT in 2020 (Covid).
 There were data issues in 2021 (HMIS).



Point-in-Time: Unsheltered - July



Coalition	July 2019 #HH	July 2021 #HH	July 2022 #HH	July 2023 #HH
Brown	31	42	75	90
Central	8	13	11	10
Coulee	56	90	136	61
Dairyland	19	40	30	40
East Central	6	17	0	3
Fox Cities	29	32	38	57
Jefferson	3	0	7	9
Kenosha	15	7	17	9
Lakeshore	14	11	15	26
North Central	31	21	31	19
Northeast	8	9	3	0
Northwest	4	4	14	5

Coalition	July 2019 #HH	July 2021 #HH	July 2022 #HH	July 2023 #HH
NWISH	0	2	0	0
Ozaukee	1	1	0	4
Rock-Walworth	6	14	3	19
Rural North	2	9	6	5
Southwest	0	15	15	0
Washington	1	0	0	0
Waukesha	34	14	31	27
West Central	18	0	8	4
Winnebago-land	16	31	52	13

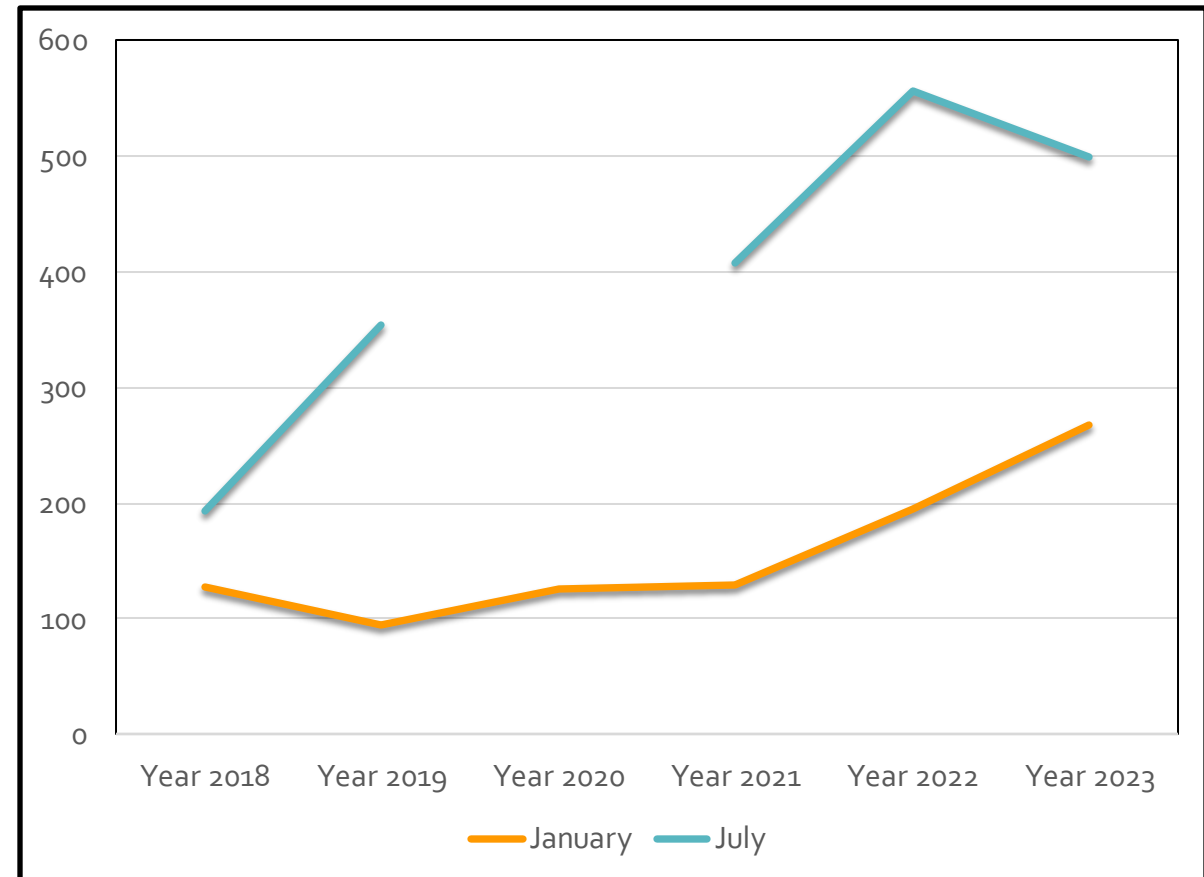
Point-in-Time – Unsheltered



	Jan 2018	Jan 2019	Jan 2020	Jan 2021	Jan 2022	Jan 2023
# HH	106	83	109	114	151	248
# People	127	94	125	129	195	268

Increase in the number of people experiencing unsheltered homelessness increased by **37.4%** between 2022 and 2023.

	July 2018	July 2019	July 2021	July 2022	July 2023
# HH	165	306	377	493	404
# People	194	355	408	557	500



A solid blue vertical bar is positioned on the left side of the slide, extending from the top to the bottom.

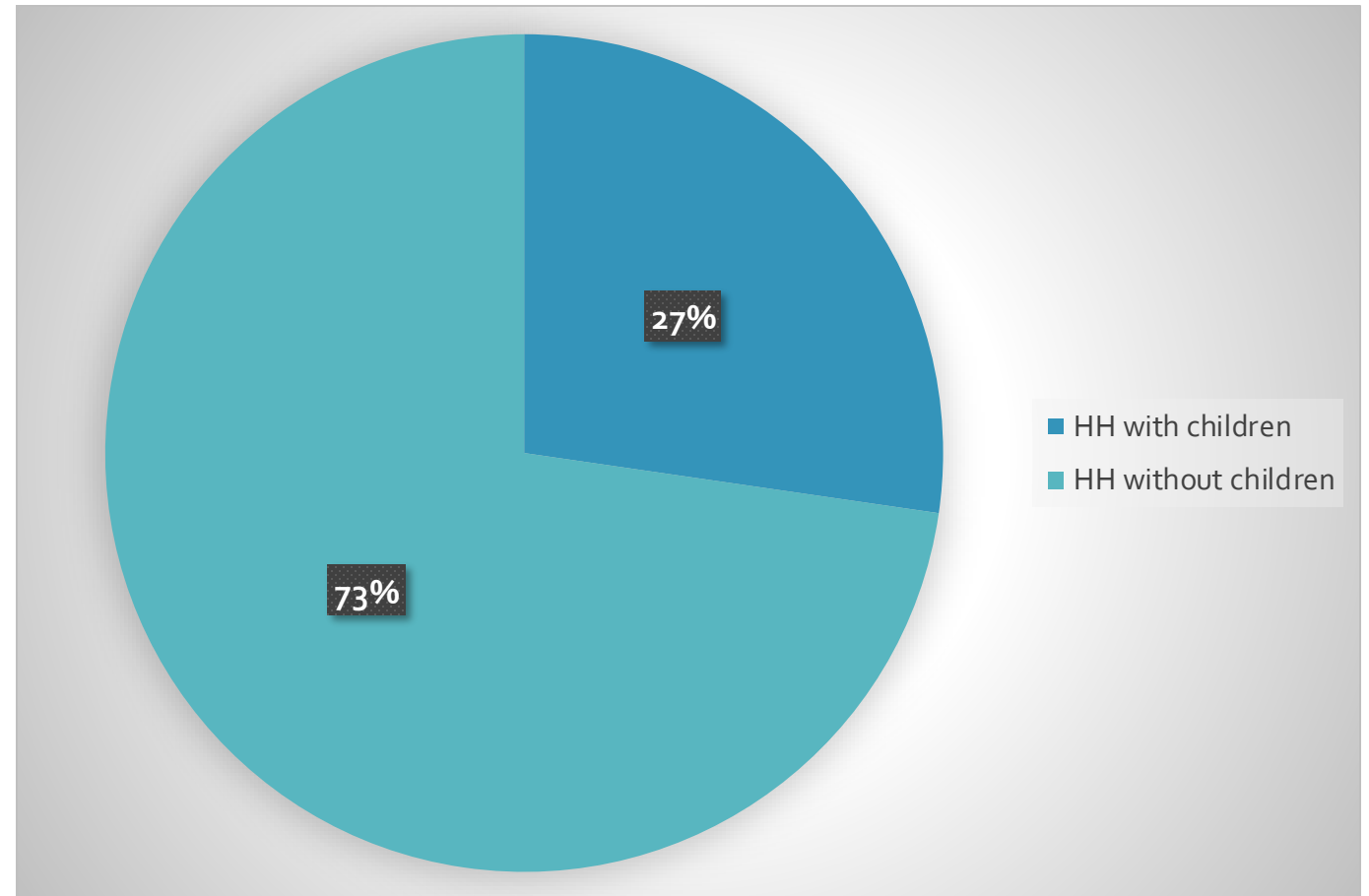
COORDINATED ENTRY

Homelessness by Household Type



	Feb 2020	Feb 2021	Feb 2022	Feb 2023
HH w/out	2,093 74%	1360 74%	1625 79%	1,819 79%
HH with	722 26%	475 26%	421 21%	484 21%

	May 2023	Aug 2022	Aug 2023	Nov 2022	Nov 2023
HH w/out	1,641 80%	1,809 80%	1,470 74%	1,759 77%	1,617 73%
HH with	416 20%	462 20%	506 26%	525 23%	607 27%



According to CE Data 11.12.23

WI Balance of State CoC - Coordinated Entry



HH without Children	11/12/23	8/7/23	5/15/23
Currently waiting on PL	1,617 people	1,470 people	1,641 people
Chronic Homeless	312 people	330 people	340 people
Veterans	65 people	63 people	59 people
Youth (18-24)	129 people	144 people	135 people
DV survivors (HMIS)	173 people	143 people	141 people
Average Length of Time (LOT) on list	134.43 days	147.5 days	157.7 days
Longest LOT on list	1,580 days	1,482 days	1,398 days
Number of people on list 200 days +	390 people	407 people	436 people

HH with Children	11/12/23	8/7/23	5/15/23
Currently waiting on PL	607 HH	506 HH	416 HH
Chronic Homeless	40 people	36 people	38 people
Veterans	3 people	3 people	4 people
Youth (18-24)	70 people	55 people	56 people
DV survivors (HMIS)	159 people	126 people	111 people
Average Length of Time (LOT) on list	94.38 days	84.52 days	117.9 days
Longest LOT on list	621 days	523 days	868 days
Number of households on list 200 days +	91 HH	76 HH	73 HH

WI Balance of State CoC - Coordinated Entry



Level of Needed Support	# HH w/out children	Average months homeless	# HH w/ children	Average months homeless	# Housing Solutions Nov 2023	# Housing Solutions Aug 2023	# Housing Solutions May 2023
<u>Permanent Supportive Housing</u> Chronic with disability (more than 12 months homeless)	320	31.1	40	30	473 (21%)	474 (24%)	477 (23%)
Non-Chronic with disability & more than 12 months homeless	97	27.5	16	17.4			
<u>Rapid Re-housing with intensive case management</u> Non-Chronic with disability & less than 12 months homeless	535	5.2	140	4.5	1,073 (48%)	968 (49%)	1,043 (51%)
Non-Chronic without a disability & more than 12 months homeless	284	32.7	114	21.4			
<u>Rapid Re-housing</u> Non-Chronic without a disability & less than 12 months homeless	381	4.8	297	4	678 (31%)	541 (27%)	537 (26%)
Total	1,617		607		2,224	1,983	2,057

According to CE Data 11.12.23

Definitions



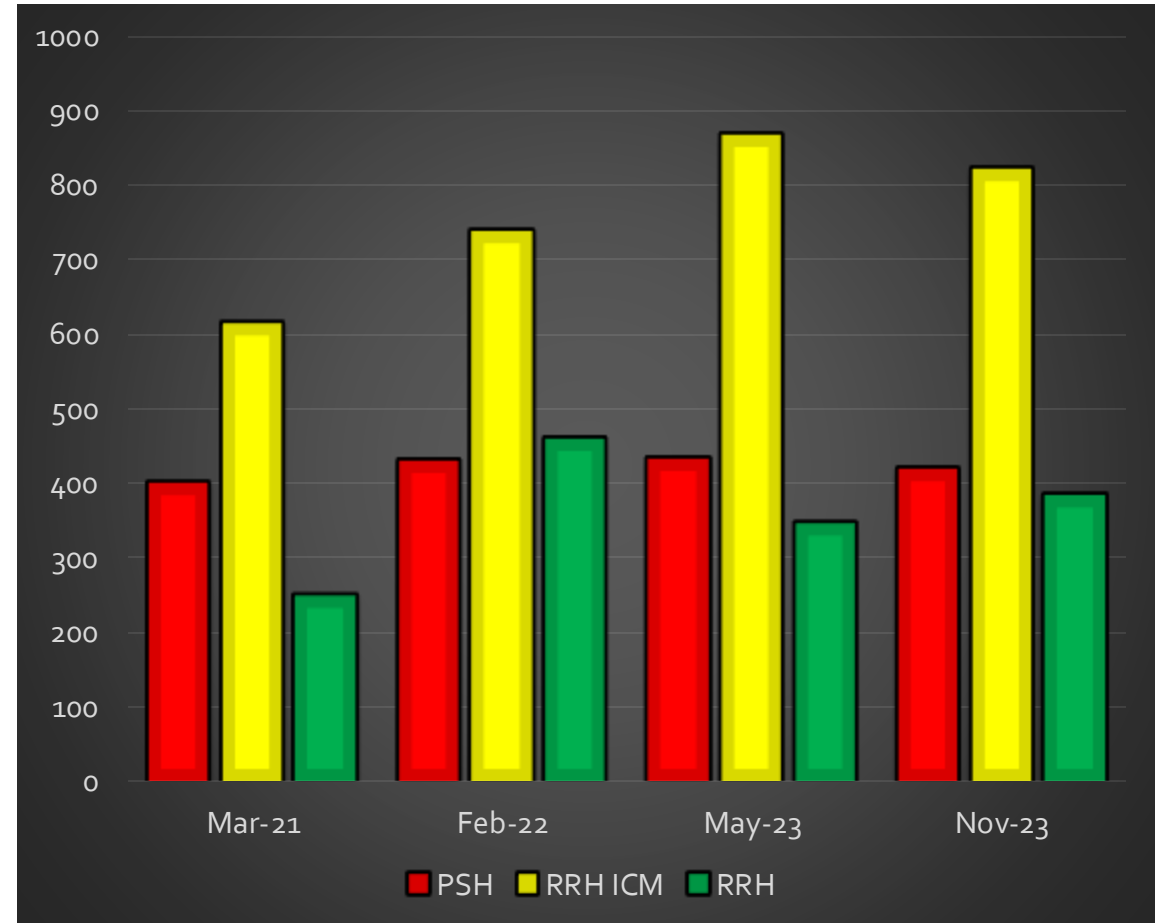
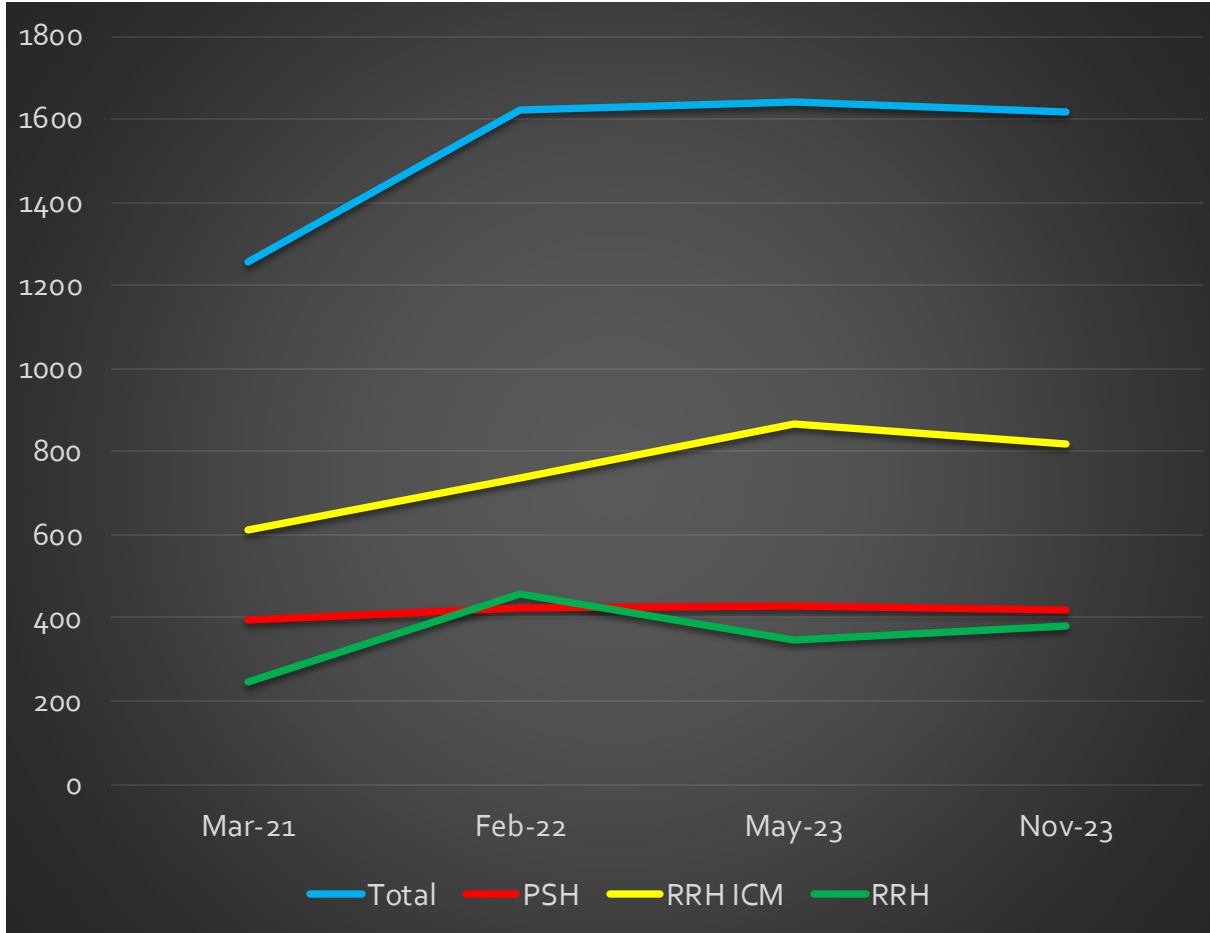
- **CH = Meets Chronic Homeless Definition**
 - Disability
 - Category 1 homeless situation (place not meant for human habitation or shelter)
 - Homeless for 12 consecutive months or 4 times within 3 years that totals 12 months

- **CH – 2nd priority = does not meet chronic homeless definition**
 - Disability
 - Category 1 homeless situation (place not meant for human habitation or shelter)
 - Homeless for 12 non-consecutive months or less than 4 times within 3 years

- **RRH w/ICM (intensive case management) = does not meet chronic homeless definition**
 - Disability, less than 12 months of homelessness AND
 - Without a disability, 12 months or more of homelessness

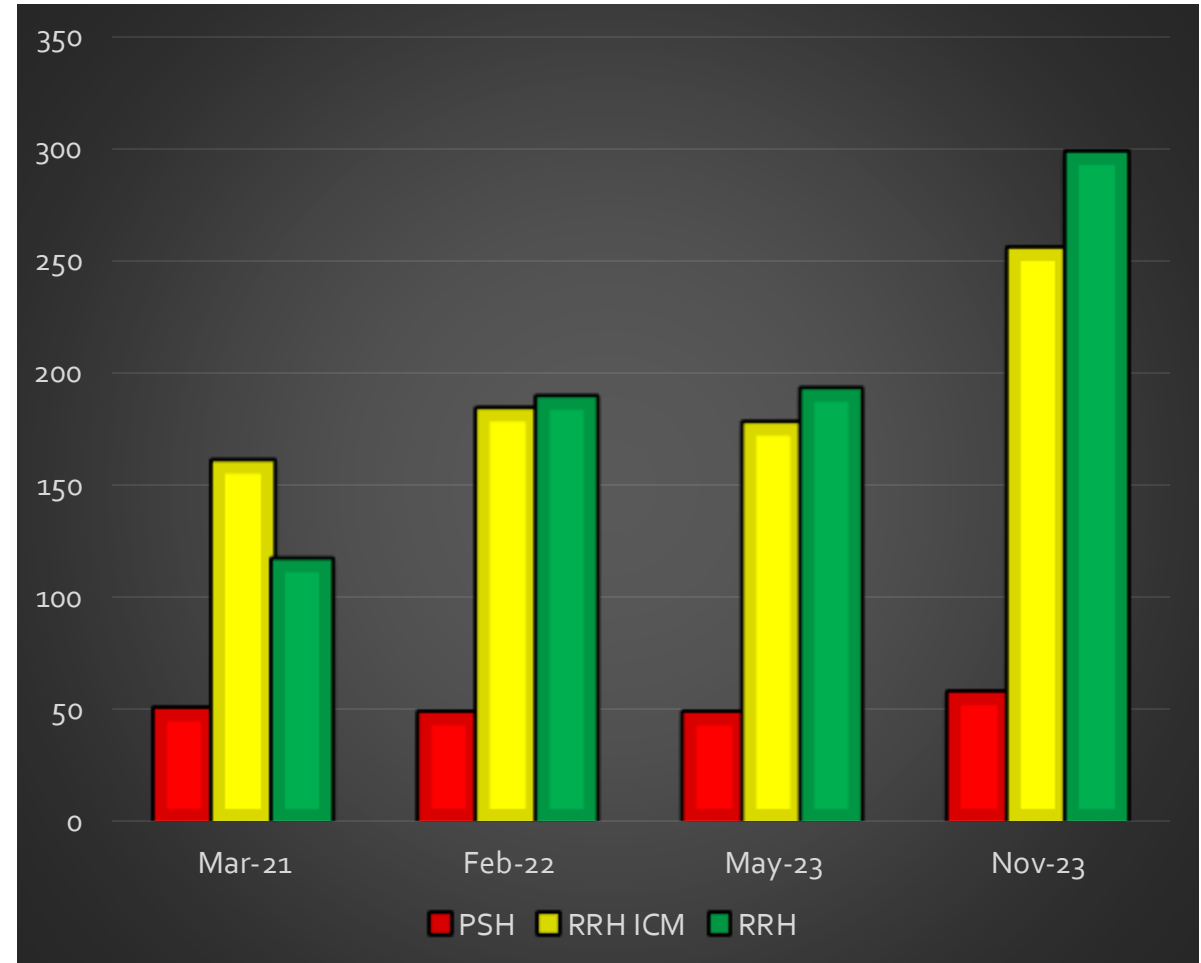
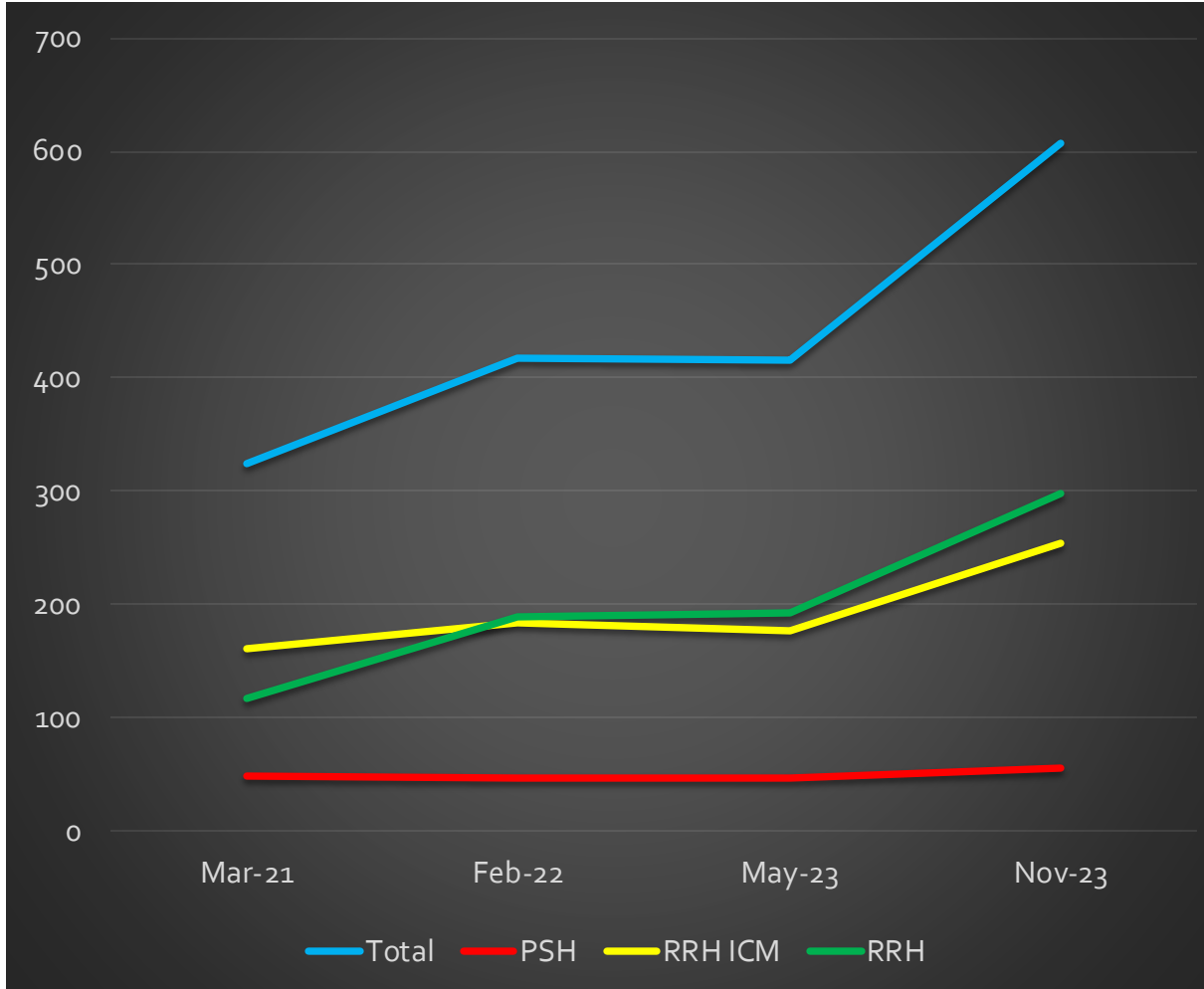
- **RRH = does not meet chronic homeless definition**
 - Without a disability, less than 12 months of homelessness

Households without Children – Permanent Housing Solutions Needed



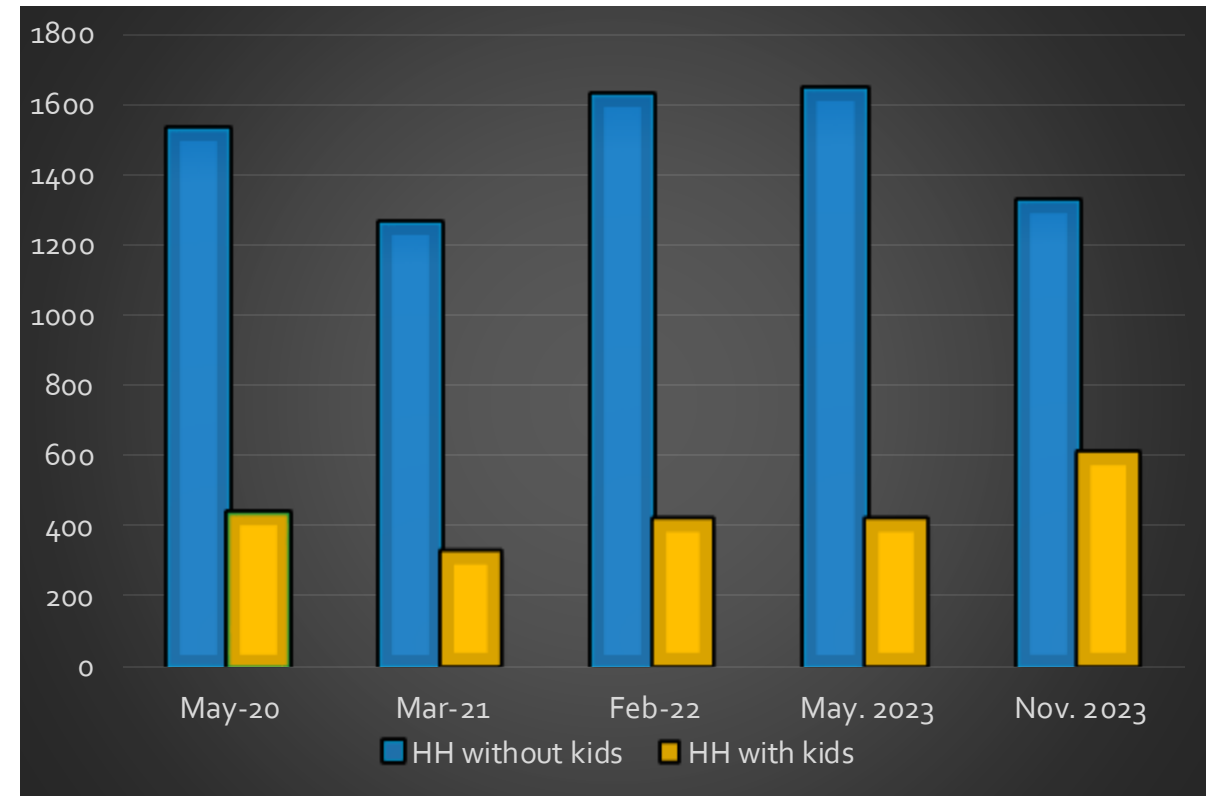
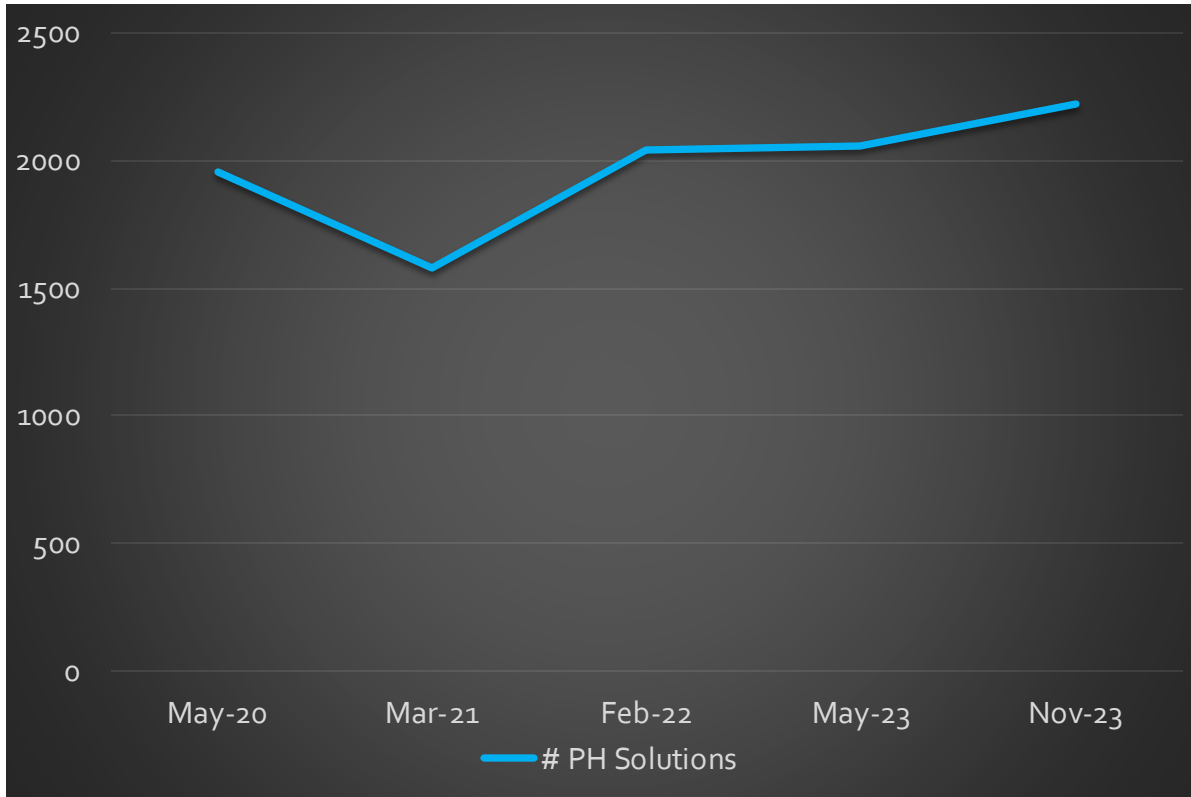
Balance of State CE Data – as of 11/12/23

Households with Children – Permanent Housing Solutions Needed



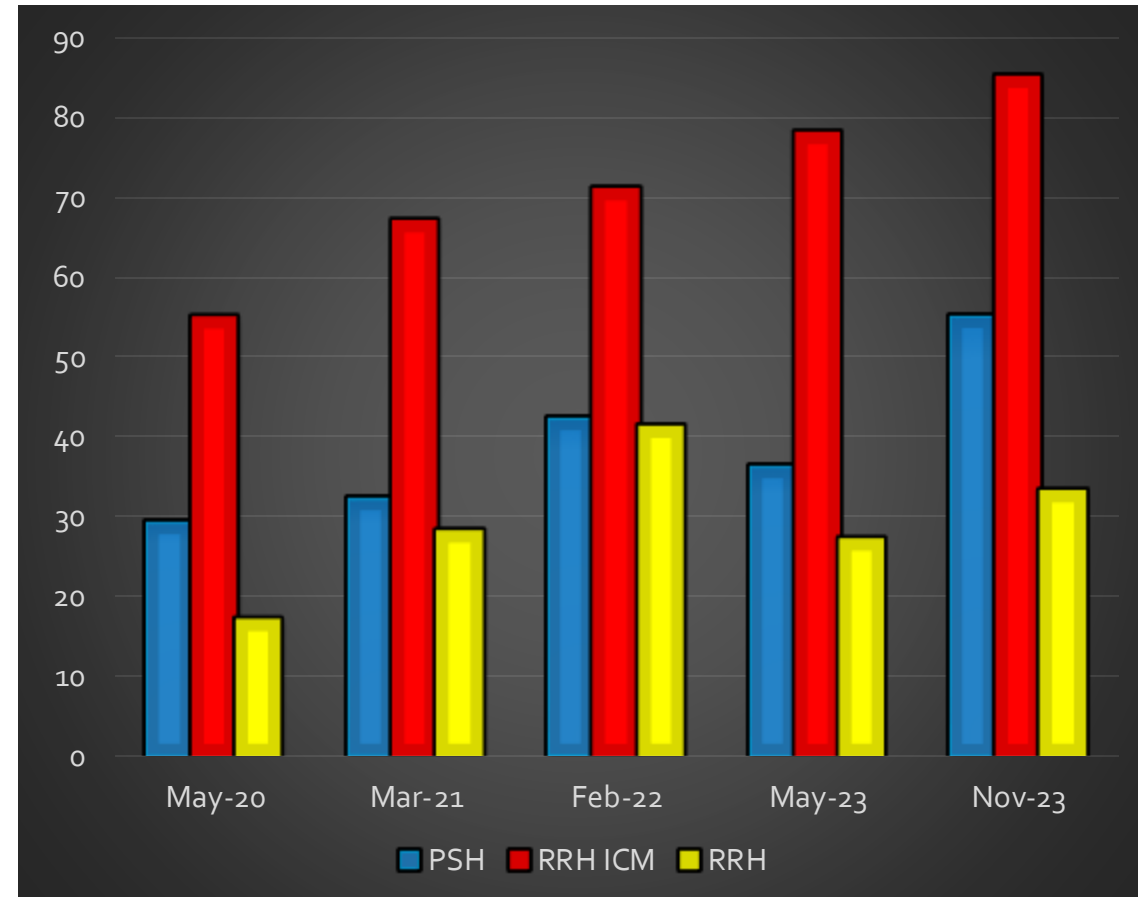
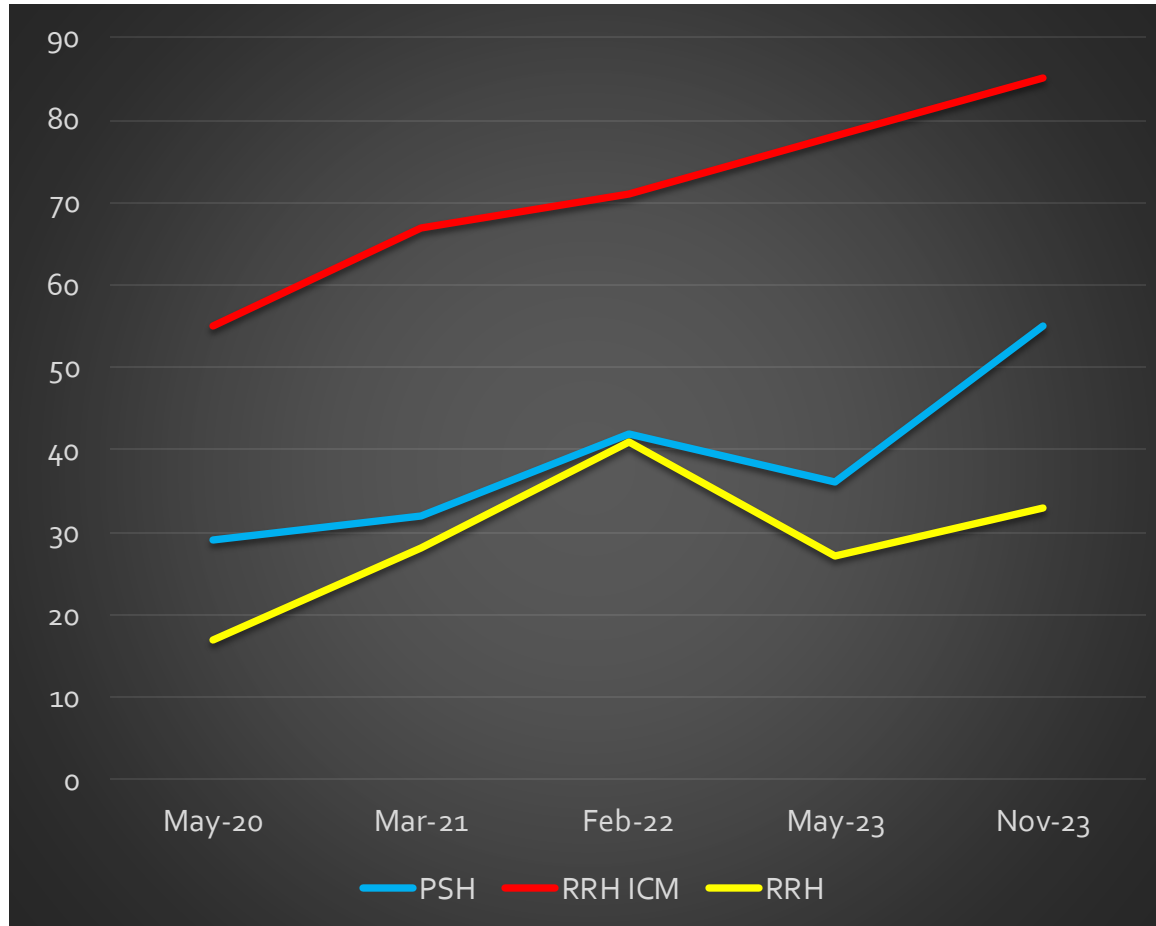
Balance of State CE Data – as of 11/12/23

Total Permanent Housing Solutions Needed



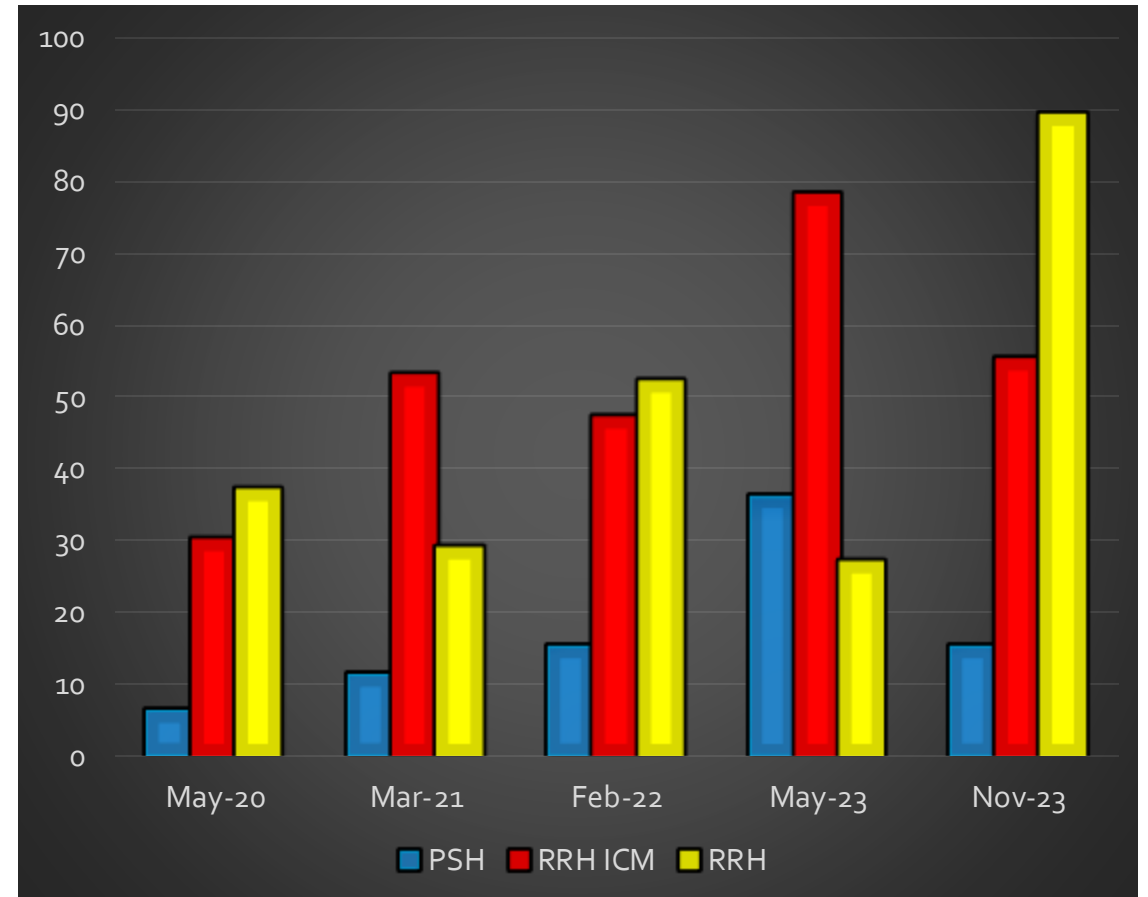
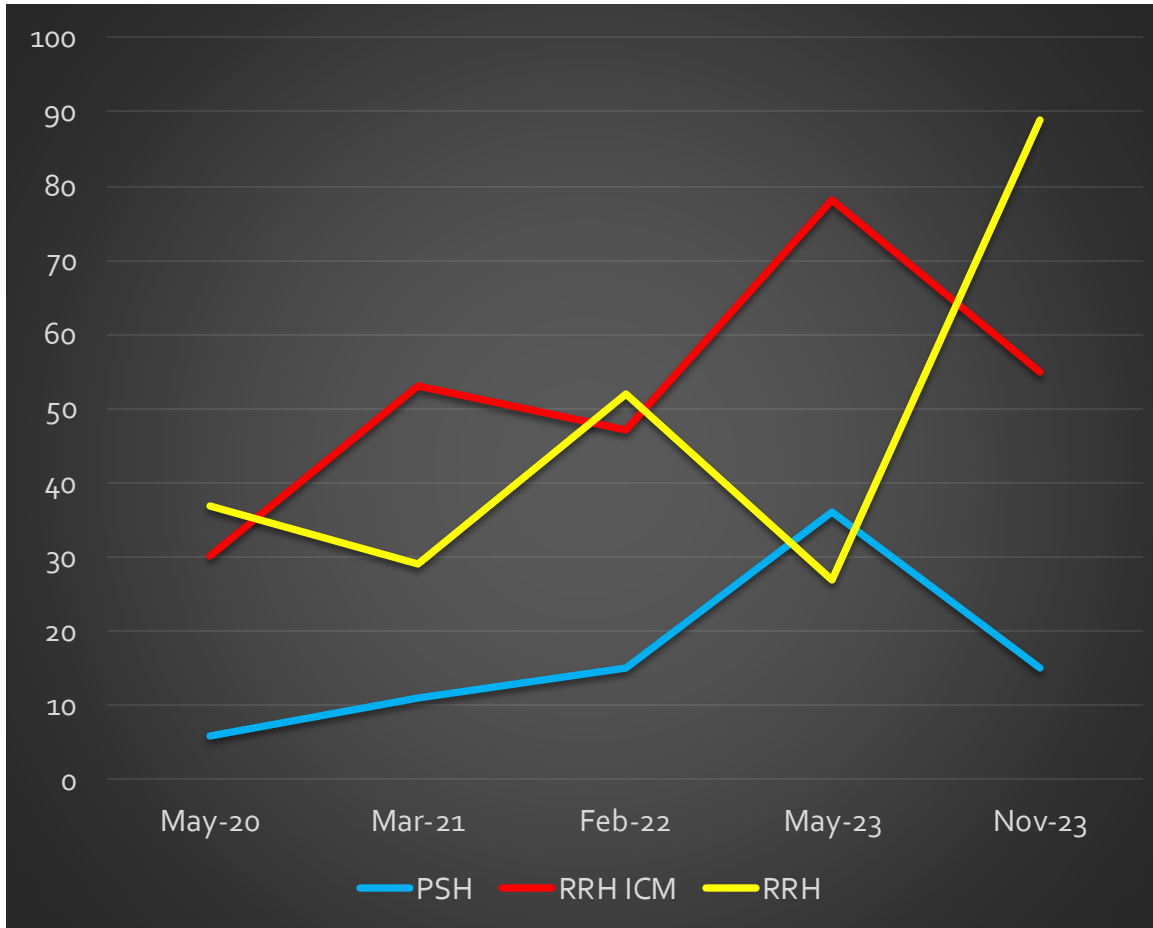
Balance of State CE Data– as of 11/12/23

Survivors of DV (Households without children) – Permanent Housing Solutions Needed



Balance of State CE Data – as of 11/12/23

Survivors of DV (Households with children) – Permanent Housing Solutions Needed



Balance of State CE Data – as of 11/12/23

Coordinated Entry – HMIS Prioritization



Coalition	HH w/out kids	HH w/kids	Total HH Nov 2023	Total HH Aug 2023	Average # days on list HH w/o	Average # days on list HH w
Brown	227	157	384	286	118.7	97.0
Central	130	35	165	83	62.1	85.7
Coulee	178	41	219	254	234.4	101.1
Dairyland	222	56	278	226	143.2	71.2
East Central	85	14	99	64	79.6	63.9
Fox Cities	223	93	316	245	123.1	95.2
Jefferson	54	38	92	61	91.7	79.2
Kenosha	77	46	123	127	86.9	98.7
Lakeshore	110	63	173	127	101.7	92.1
North Central	89	35	124	115	116.9	70.6
NE/NWISH	73	58	131	104	89.0	85.0
Northwest	84	45	129	123	112.3	86.5

Coalition	HH w/out kids	HH w/kids	Total HH Nov 2023	Total HH May 2023	Average # days on list HH w/o	Average # days on list HH w
Ozaukee	37	26	63	51	110.1	111.2
Rock-Walworth	143	111	254	202	114.0	103.8
Rural North	64	28	92	76	113.0	105.4
Southwest	35	21	56	49	79.9	89.5
Washington	55	31	86	99	142.4	126.9
Waukesha	119	44	163	190	179.0	91.1
West Central	214	67	281	216	111.7	82.8
Winnebago-land	186	94	280	211	154.5	97.8
TOTAL			3,508	2,909		

Coordinated Entry – HMIS Prioritization



Coalition	Vet HH	CH HH	DV HH	Youth HH	Senior HH
Brown	2	48	76	44	48
Central	2	22	22	20	29
Coulee	12	75	50	15	40
Dairyland	9	66	49	15	42
East Central	2	20	14	6	18
Fox Cities	16	42	49	23	64
Jefferson	0	15	24	11	10
Kenosha	1	22	22	19	14
Lakeshore	6	22	34	21	21
North Central	1	14	21	7	20
NE/NWISH	1	15	26	10	13
Northwest	3	28	37	4	28

Coalition	Vet HH	CH HH	DV HH	Youth HH	Senior HH
Ozaukee	1	10	16	8	6
Rock-Walworth	2	27	43	30	37
Rural North	1	17	20	3	15
Southwest	0	12	16	4	7
Washington	2	13	19	12	10
Waukesha	3	25	28	21	24
West Central	10	62	47	7	51
Winnebago-land	9	46	49	28	46

Coordinated Entry – Non HMIS Prioritization



Coalition	HH w/out kids	HH w/kids	Total HH	Compare (May 2023)
Brown	29	46	75	106
Central	25	52	77	58
Coulee	4	2	6	2
Dairyland	18	82	100	75
East Central	4	4	8	5
Fox Cities	19	25	44	91
Jefferson	3	5	8	4
Kenosha	43	22	65	44
Lakeshore	14	21	35	26
North Central	10	17	27	18
NE/NWISH	4	6	10	11
Northwest	2	3	5	3

Coalition	HH w/out kids	HH w/kids	Total HH	Compare (May 2023)
Ozaukee	5	7	12	6
Rock-Walworth	17	16	33	18
Rural North	1	3	4	1
Southwest	3	4	7	2
Washington	19	21	40	31
Waukesha	11	12	23	9
West Central	14	14	28	22
WinnebagoLand	25	45	70	87
TOTAL	272	407	679	619

	Feb 2019	Feb 2020	Feb 2021	Feb 2022	May 2022	Aug 2022	Nov 2022	Feb 2023	May 2023	Nov 2023
Total	236	310	344	600	586	706	465	540	619	679

Non-HMIS Prioritization List as of 11.12.2023

A solid blue vertical bar is positioned on the left side of the slide, extending from the top to the bottom.

SYSTEM PERFORMANCE

Elements Used in the CoC Competition



Reduce the Number of
People Experiencing
Homelessness



Reduce the Number of
First Time Homeless



Reduce the Length of
Time Homeless



Increase Successful
Permanent Housing
Placement or Retention



Decrease Returns to
Homelessness



Increase Jobs & Growth

Reduce the Number of First Time Homeless

First time homeless is defined as a person who has not been served by the homeless system in the two years prior to an entry into that homeless system.

Element – CoC Competition	2022	2021	Percentage Change
Reduction Between FY21 and FY 22	7305	7202	1.4% increase



To get the number of first time homeless, there are 3 steps.

- (1) Using HMIS data, add the number of people who entered an emergency shelter, safe haven, and transitional housing during the report period.
- (2) Using HMIS data, calculate the number of people were in emergency shelter, safe haven, transitional housing, and all permanent housing projects in HMIS 24 months prior to their entry during the report period.
- (3) Subtract the total from Step 2 by the total from Step 1 to calculate the number of persons experiencing homelessness for the first time.

First Time Homeless

*22/23 is not final



Coalition	17/18 # % total	18/19 # % total	19/20 # % total	20/21 # % total	21/22 # % total	22/23* # % total
Brown	1095 70%	1276 70%	1062 66%	1406 70%	1023 65%	993 63%
Central	354 91%	239 83%	321 85%	360 80%	568 88%	273 78%
Coulee	537 61%	403 58%	292 56%	421 65%	645 72%	396 63%
Dairyland	482 65%	438 65%	348 59%	322 68%	385 72%	416 66%
East Central	204 69%	276 72%	268 74%	189 63%	280 71%	265 70%
Fox Cities	595 62%	531 61%	428 56%	527 64%	510 62%	407 57%
Jefferson	94 78%	29 73%	89 93%	99 92%	41 71%	9 56%
Kenosha	416 80%	480 83%	325 81%	403 82%	542 80%	457 81%
Lakeshore	287 82%	337 83%	278 83%	287 75%	299 74%	254 81%
North Central	392 72%	332 67%	260 62%	268 67%	234 64%	314 64%
Northeast	203 64%	192 69%	155 67%	141 68%	115 67%	150 71%

Coalition	17/18 # % total	18/19 # % total	19/20 # % total	20/21 # % total	21/22 # % total	22/23* # % total
NWISH	99 81%	78 70%	78 81%	80 73%	98 73%	67 80%
Northwest	335 87%	398 87%	355 89%	407 82%	179 85%	135 90%
Ozaukee	25 96%	37 100%	77 83%	73 81%	49 85%	39 80%
Rock- Walworth	603 79%	578 76%	483 82%	785 83%	873 85%	599 79%
Rural North	99 88%	96 91%	87 88%	122 87%	134 82%	145 87%
Southwest	45 100%	43 90%	62 94%	160 98%	107 92%	123 95%
Washington	95 90%	83 83%	160 83%	113 85%	179 77%	80 84%
Waukesha	601 67%	620 69%	453 65%	474 68%	327 65%	403 76%
West Central	624 80%	621 80%	621 79%	620 77%	729 77%	683 77%
Winnebago- land	274 72%	258 69%	309 70%	232 61%	294 69%	450 71%

Comparison



Coalitions with the highest percentage of First Time Homeless are:	Southwest Rural North	95% 87%	Northwest Washington	90% 84%
Coalitions with the lowest percentage of First Time Homeless are:	Coulee Fox Cities	63% 57%	Brown Jefferson	63% 56%
Coalitions showing the largest decrease between 21/22 and 22/23 are:	Brown Coulee	-295 people -249 people	Rock Walworth	-274 people

First Two Weeks of Shelter

*22/23 is not final



Coalition	20/21 1-7 & 8-14 days	21/22 1-7 & 8-14 days	22/23* 1-7 & 8-14 days
Brown	26% 12% 38%	20% 8% 28%	17% 9% 26%
Central	40% 13% 53%	32% 13% 45%	30% 10% 40%
Coulee	18% 10% 28%	16% 9% 25%	20% 7% 27%
Dairyland	13% 5% 18%	19% 10% 29%	21% 9% 30%
East Central	26% 8% 34%	29% 12% 41%	26% 10% 36%
Fox Cities	14% 11% 25%	15% 5% 20%	13% 6% 19%
Jefferson	<1% 11% 11%	14% 2% 16%	3% 16% 19%
Kenosha	31% 9% 40%	47% 7% 54%	46% 5% 51%
Lakeshore	21% 9% 30%	19% 8% 27%	12% 8% 20%
North Central	37% 10% 47%	29% 10% 39%	29% 12% 41%
Northeast	28% 15% 43%	26% 9% 35%	24% 8% 32%

Coalition	20/21 1-7 & 8-14 days	21/22 1-7 & 8-14 days	22/23* 1-7 & 8-14 days
NWISH	22% 13% 35%	26% 10% 36%	10% 16% 26%
Northwest	24% 16% 40%	3% 16% 19%	9% 15% 24%
Ozaukee	9% 4% 13%	8% 3% 11%	2% 4% 6%
Rock-Walworth	11% 9% 20%	11% 10% 21%	11% 12% 23%
Rural North	22% 3% 25%	20% 13% 33%	16% 5% 21%
Southwest	22% 11% 33%	34% 11% 45%	49% 11% 60%
Washington	32% 7% 39%	26% 10% 36%	14% 4% 18%
Waukesha	25% 8% 33%	17% 7% 24%	11% 10% 21%
West Central	19% 8% 27%	19% 9% 28%	16% 8% 24%
WinnebagoLand	25% 11% 36%	19% 9% 28%	16% 8% 24%

Comparison



Coalitions with the highest percentage of people exiting shelter within 2 weeks	Southwest 60%	Kenosha 51%
	North Central 41%	Central 40%
Coalitions with the lowest percentage of people exiting shelter within 2 weeks	Fox Cities 19%	Jefferson 19%
	Washington 18%	Ozaukee 6%

Contact Information



Carrie Poser

CoC Director

Wisconsin Balance of State CoC

carrie.poser@wibos.org

PO Box 272, Eau Claire, WI 54702

Phone: 715-598-3301

Website: www.wiboscoc.org