

ENDING HOMELESSNESS & COORDINATED ENTRY

Carrie Poser

CoC Director, WI Balance of State CoC

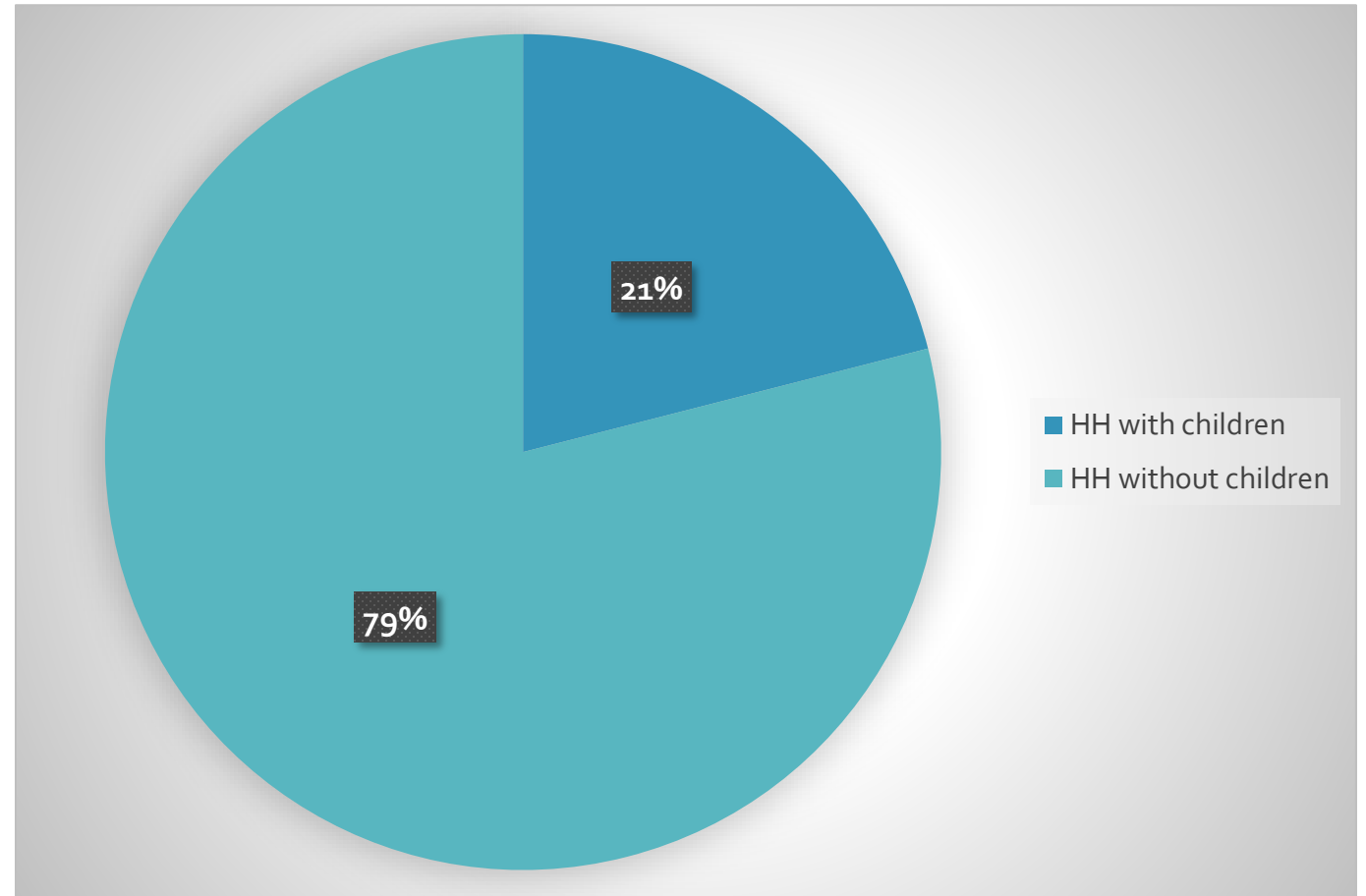
February 2023

Homelessness by Household Type



	Feb 2020	Feb 2021	Feb 2022	Feb 2023
HH w/out	2,093 74%	1360 74%	1625 79%	1,819 79%
HH with	722 26%	475 26%	421 21%	484 21%

	May 2022	Aug 2022	Nov 2022
HH w/out	1,711 79%	1,809 80%	1,759 77%
HH with	453 21%	462 20%	525 23%



According to CE Data 2.3.23

WI Balance of State CoC - Coordinated Entry



HH without Children	2/3/23	11/14/22	8/8/22
Currently waiting on PL	1,819 people	1,759 people	1,809 people
Chronic Homeless	375 people	341 people	334 people
Veterans	73 people	81 people	63 people
Youth (18-24)	149 people	141 people	139 people
DV survivors (HMIS)	173 people	162 people	NA
Average Length of Time (LOT) on list	162.9 days	133.59 days	106.7 days
Longest LOT on list	1,453 days	1,372 days	1,271 days
Number of people on list 200 days +	516 people	NA	NA

HH with Children	2/3/23	11/14/22	8/8/22
Currently waiting on PL	484 HH	525 HH	453 HH
Chronic Homeless	34 people	35 people	25 people
Veterans	9 people	6 people	6 people
Youth (18-24)	52 people	77 people	58 people
DV survivors (HMIS)	112 people	134 people	NA
Average Length of Time (LOT) on list	135.8 days	107.83 days	95.7 days
Longest LOT on list	839 days	758 days	694 days
Number of households on list 200 days +	114 HH	NA	NA

WI Balance of State CoC - Coordinated Entry



Level of Needed Support	# HH w/out children	Average months homeless	# HH w/ children	Average months homeless	# Housing Solutions Feb. 2023	# Housing Solutions Nov. 2022
<u>Permanent Supportive Housing</u> Chronic with disability (more than 12 months homeless)	375	32.4	34	22.4	534 (23%)	521 (22.8%)
Non-Chronic with disability & more than 12 months homeless	112	22.2	13	19.1		
<u>Rapid Re-housing with intensive case management</u> Non-Chronic with disability & less than 12 months homeless	560	5.2	126	4.5	1,107 (48%)	1,021 (44.7%)
Non-Chronic without a disability & more than 12 months homeless	344	33.4	77	21.0		
<u>Rapid Re-housing</u> Non-Chronic without a disability	428	5.3	234	4.4	662 (29%)	743 (32.5%)
Total	1,819		484		2,303	2,285

According to CE Data 2.3.23

Definitions



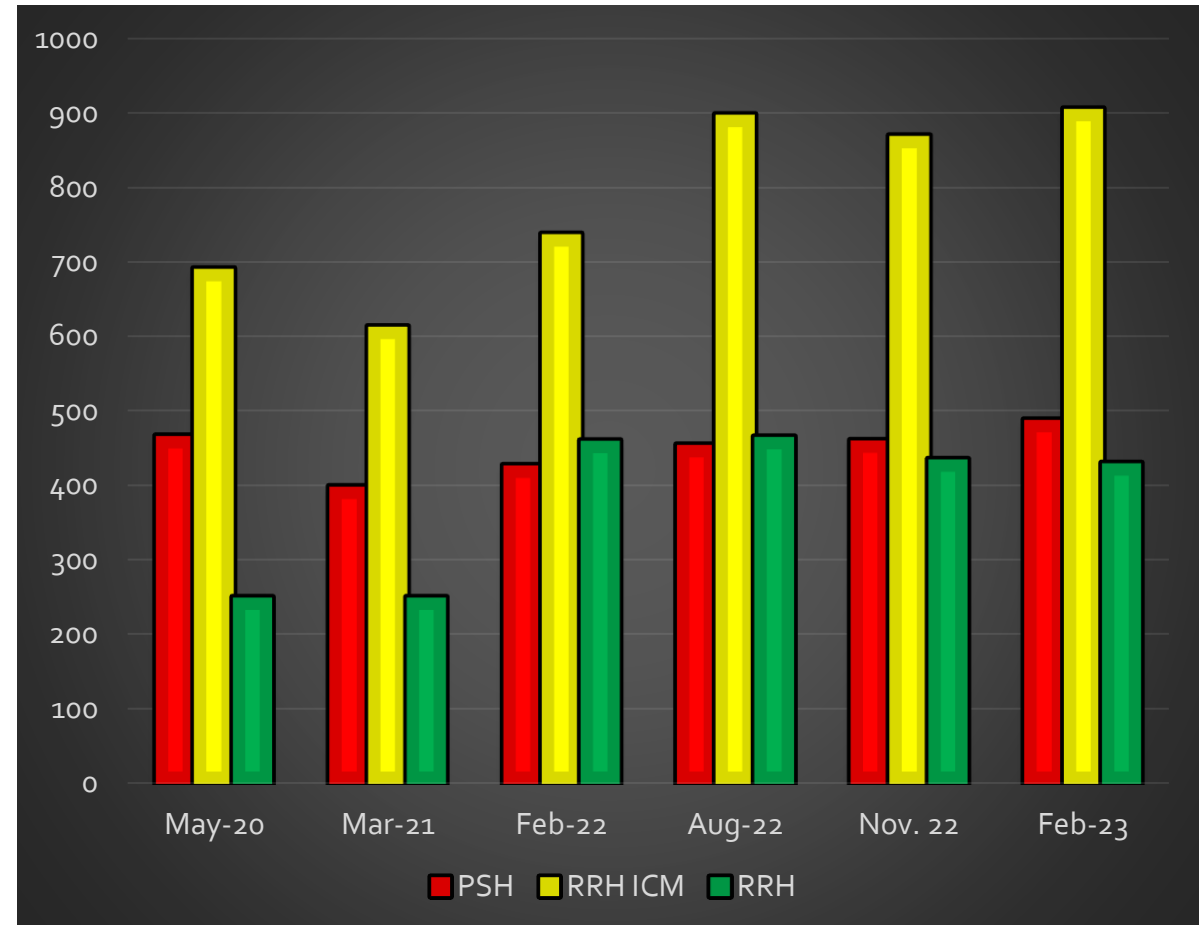
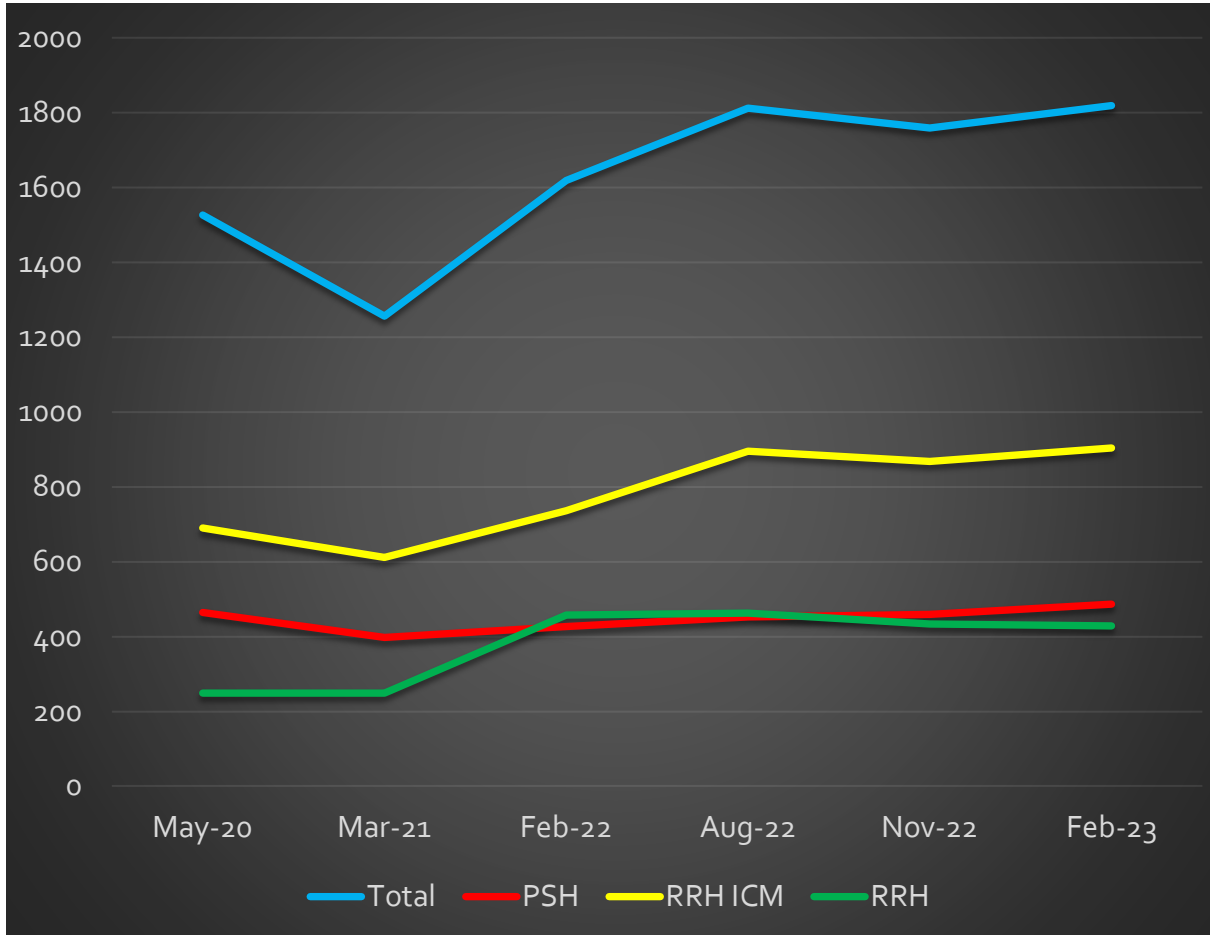
- **CH** = Meets Chronic Homeless Definition
 - Disability
 - Category 1 homeless situation (place not meant for human habitation or shelter)
 - Homeless for 12 consecutive months or 4 times within 3 years that totals 12 months

- **CH – 2nd priority** = does not meet chronic homeless definition
 - Disability
 - Category 1 homeless situation (place not meant for human habitation or shelter)
 - Homeless for 12 non-consecutive months or less than 4 times within 3 years

- **RRH w/ICM (intensive case management)** = does not meet chronic homeless definition
 - Disability, less than 12 months of homelessness AND
 - Without a disability, 12 months or more of homelessness

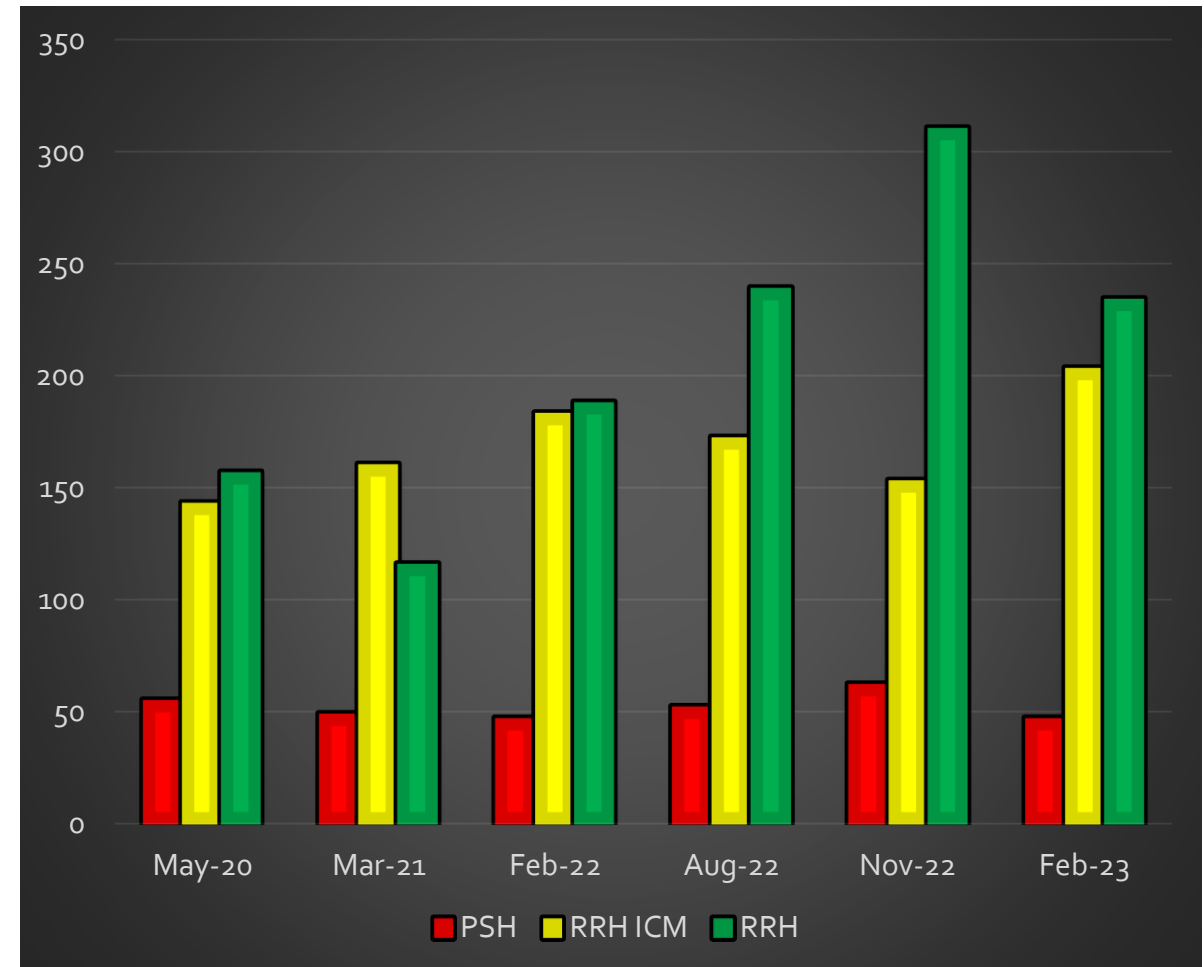
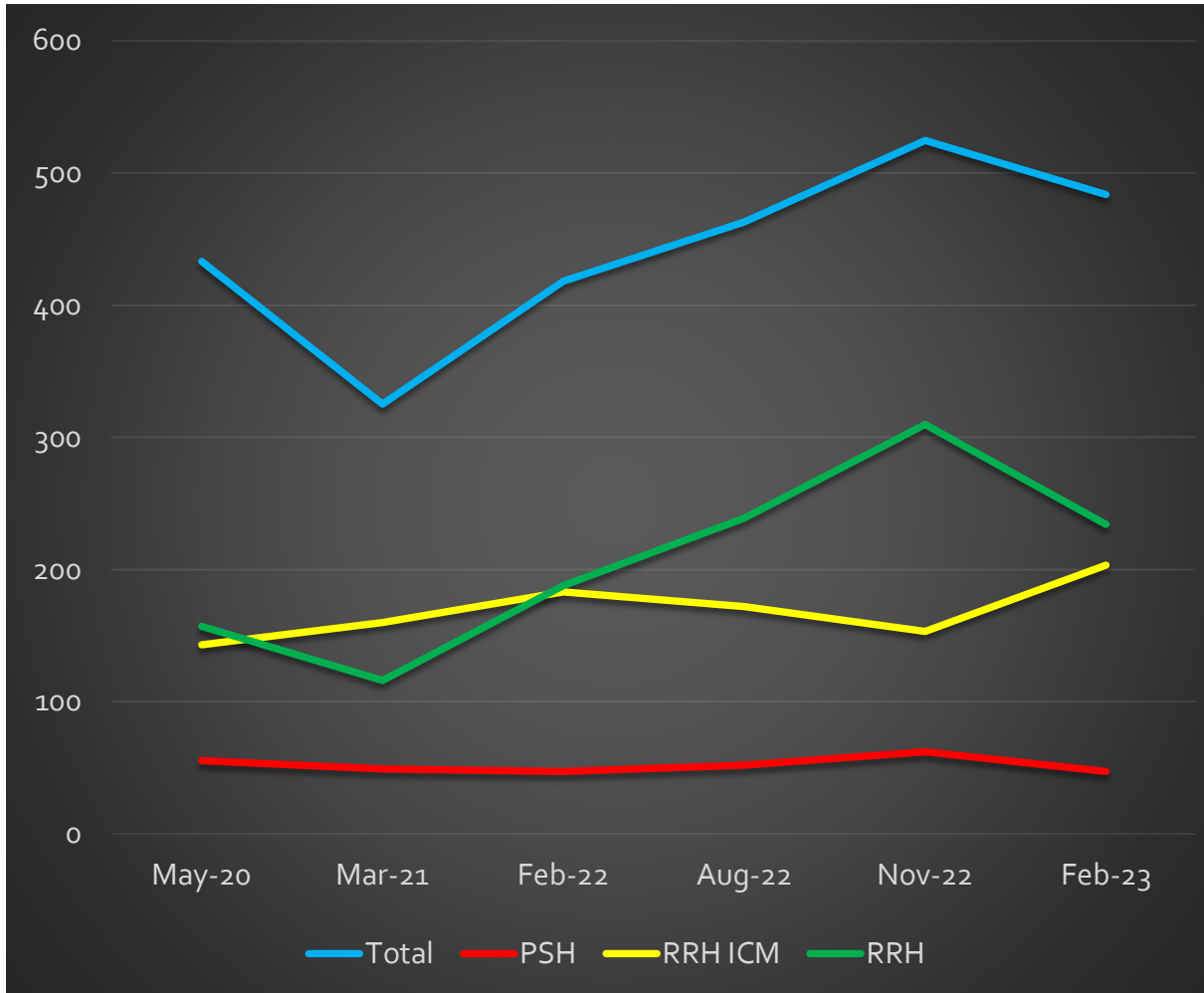
- **RRH** = does not meet chronic homeless definition
 - Without a disability, less than 12 months of homelessness

Households without Children – Permanent Housing Solutions Needed



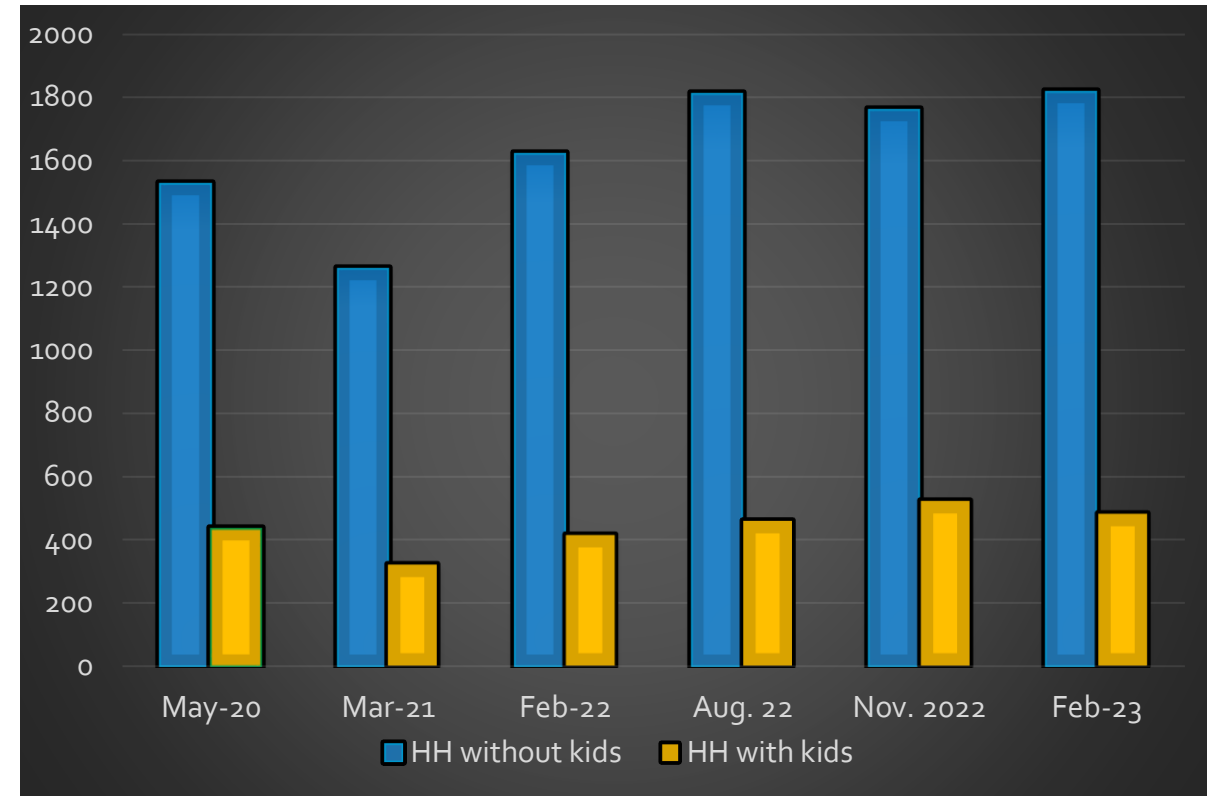
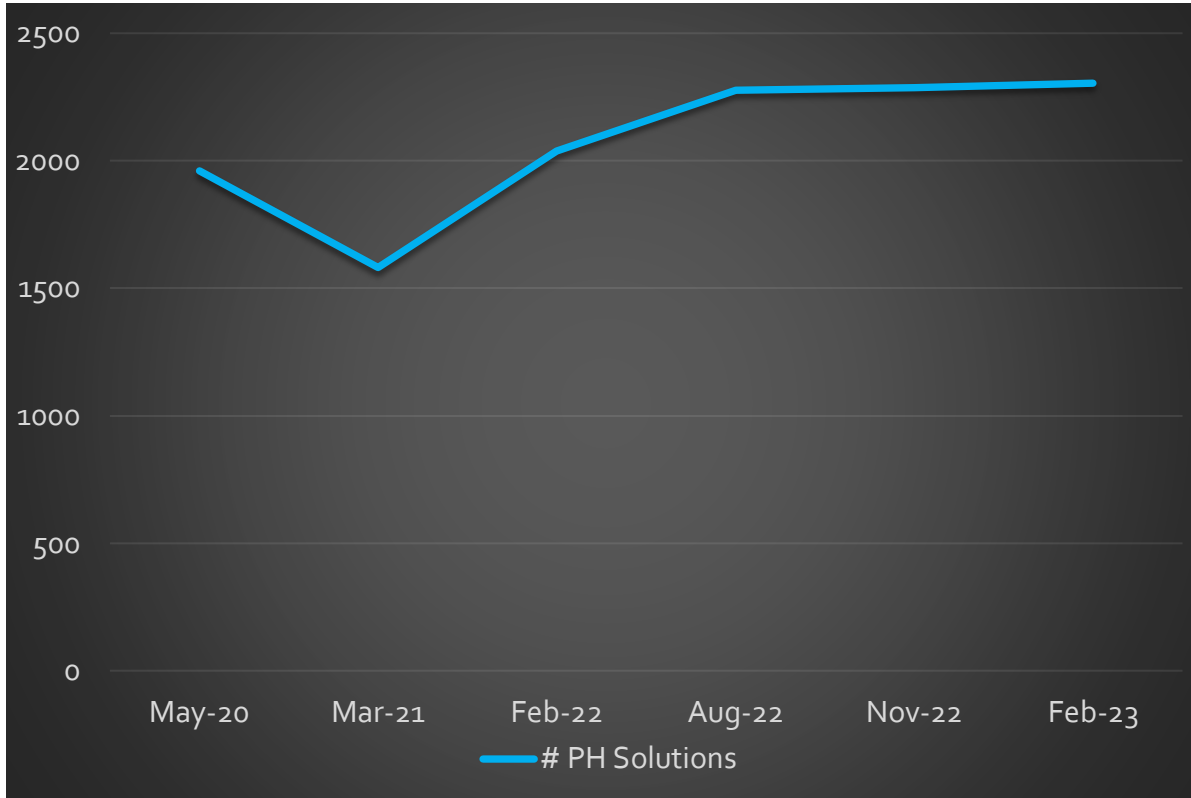
Balance of State CE Data (May 2020; March 2021; Feb, Aug & Nov 2022; Feb 2023) – as of 2/3/23

Households with Children – Permanent Housing Solutions Needed



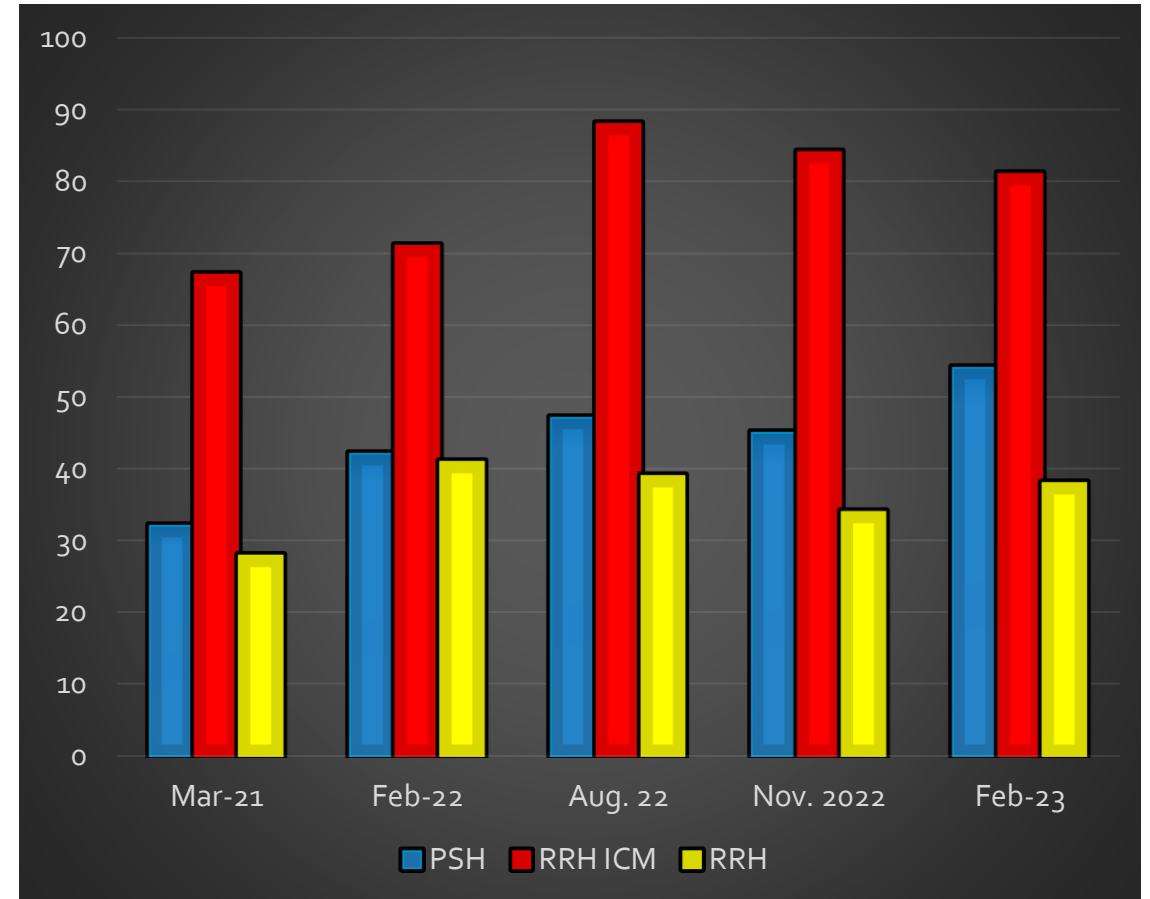
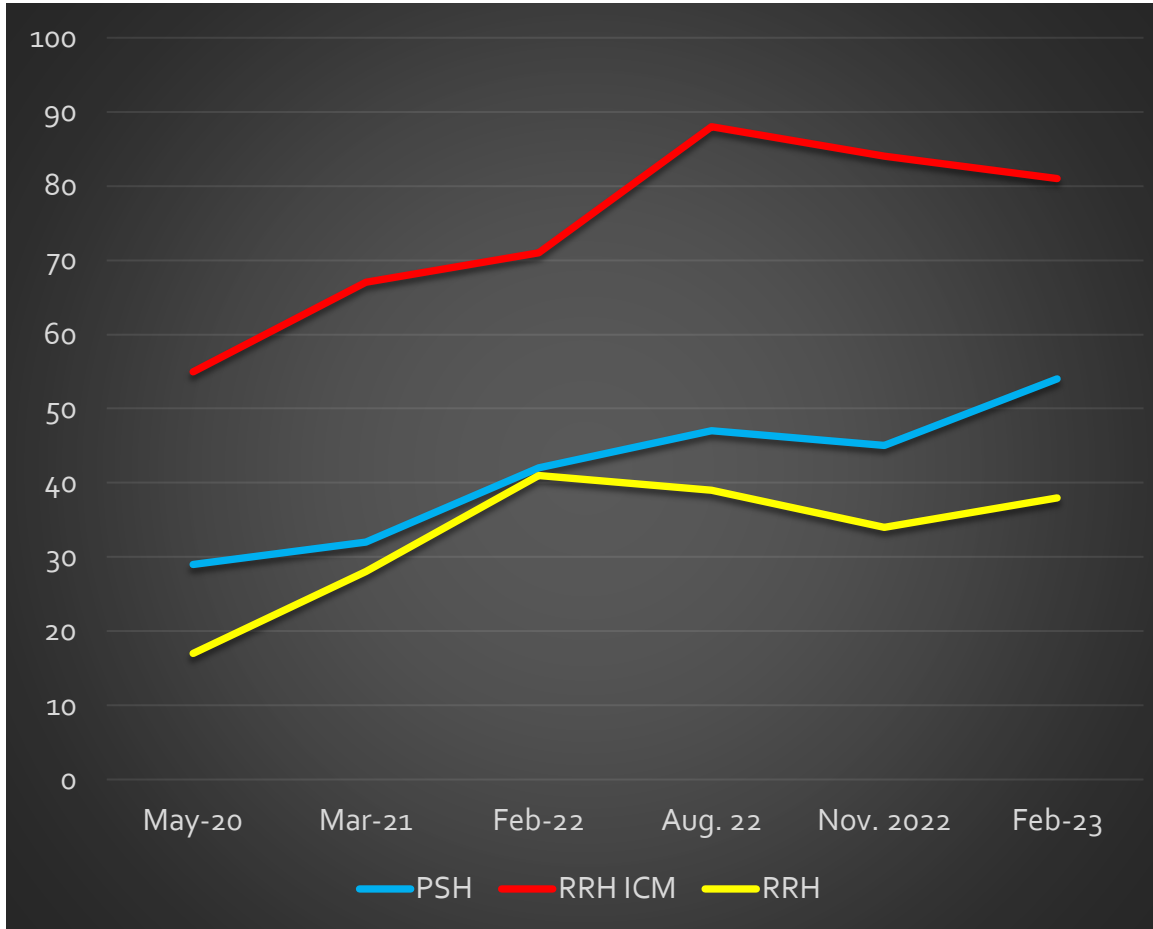
Balance of State CE Data (May 2020; March 2021; Feb, Aug & Nov 2022; Feb 2023) – as of 2/3/23

Total Permanent Housing Solutions Needed



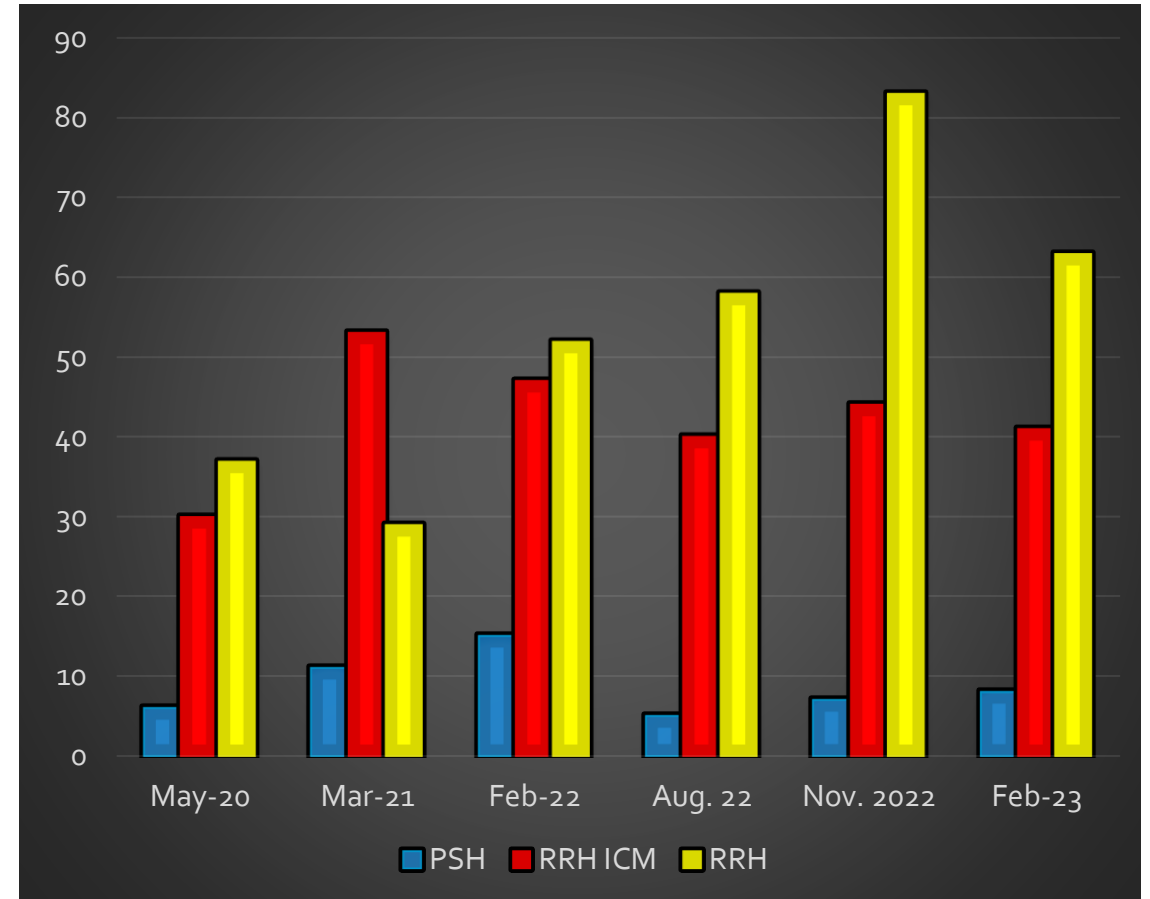
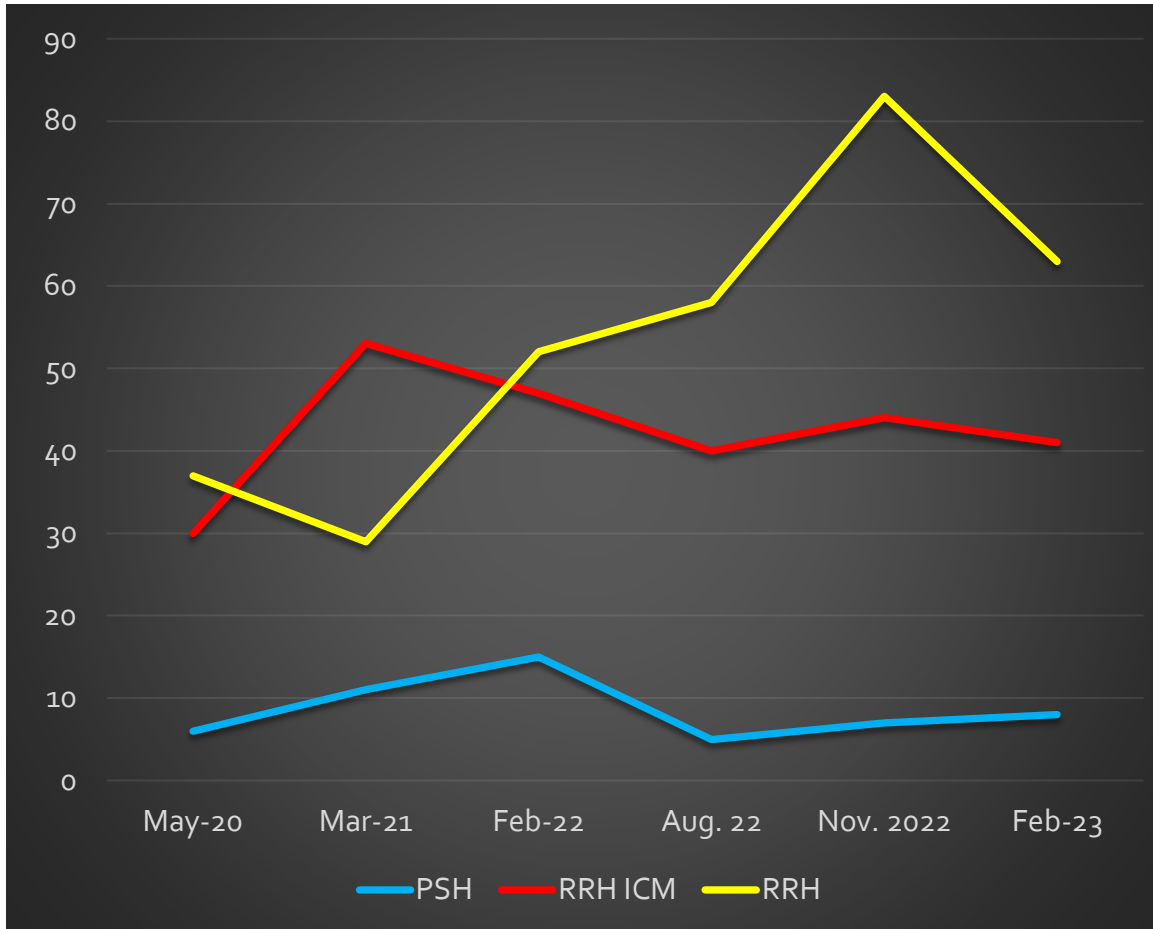
Balance of State CE Data (May 2020; March 2021; Feb, Aug & Nov 2022; Feb 2023) – as of 2/3/23

Survivors of DV (Households without children) – Permanent Housing Solutions Needed



Balance of State CE Data (May 2020; March 2021; Feb, Aug & Nov 2022; Feb 2023) – as of 2/3/23

Survivors of DV (Households with children) – Permanent Housing Solutions Needed



Balance of State CE Data (May 2020; March 2021; Feb, Aug & Nov 2022; Feb 2023) – as of 2/3/23

Coordinated Entry – HMIS Prioritization



Coalition	HH w/out kids	HH w/kids	Total HH Feb 2023	Total HH Nov 2022	Average # days on list HH w/o	Average # days on list HH w
Brown	289	116	405	388	164.5	135.5
Central	82	31	113	77	67.3	56.4
Coulee	207	50	257	253	207.8	92.9
Dairyland	245	46	291	301	139.7	78.4
East Central	70	19	89	79	93.2	72.1
Fox Cities	195	50	245	277	124.7	101.3
Jefferson	44	18	62	44	104.5	75.2
Kenosha	86	27	113	156	71.2	62
Lakeshore	82	21	103	123	109.8	77.1
North Central	96	22	118	132	119.6	108.4
NE/NWISH	83	28	111	110	101.8	123.9
Northwest	85	43	128	149	98.3	64.5

Coalition	HH w/out kids	HH w/kids	Total HH Feb 2023	Total HH Nov 2022	Average # days on list HH w/o	Average # days on list HH w
Ozaukee	25	12	37	39	115.6	54.7
Rock-Walworth	144	73	214	235	154	166.5
Rural North	75	40	115	129	116	121.3
Southwest	49	15	64	61	68.3	95.4
Washington	78	19	97	99	127.4	100
Waukesha	205	24	229	225	190.9	72.3
West Central	227	59	286	274	117.8	79.5
Winnebago-land	170	47	217	248	155.5	101.2
TOTAL			2,303	3,129		

Coordinated Entry – HMIS Prioritization



Coalition	Vet HH	CH HH	DV HH	Youth HH	Senior HH
Brown	6	47	63	36	72
Central	3	16	11	13	18
Coulee	13	86	31	26	40
Dairyland	12	87	37	20	55
East Central	2	15	11	9	14
Fox Cities	5	25	31	22	52
Jefferson	1	7	8	4	8
Kenosha	2	8	15	8	25
Lakeshore	5	8	15	6	22
North Central	4	16	14	13	19
NE/NWISH	1	12	25	8	25
Northwest	2	24	30	11	22

Coalition	Vet HH	CH HH	DV HH	Youth HH	Senior HH
Ozaukee	0	3	6	4	6
Rock-Walworth	8	10	33	28	37
Rural North	2	15	11	12	14
Southwest	3	7	6	5	9
Washington	2	10	14	9	14
Waukesha	4	46	20	20	54
West Central	13	67	44	23	50
Winnebago-land	8	19	24	17	36

Coordinated Entry – Non HMIS Prioritization



Coalition	HH w/out kids	HH w/kids	Total HH	Compare (Nov 2022)
Brown	45	63	108	119
Central	11	26	37	30
Coulee	2	0	2	0
Dairyland	8	32	40	30
East Central	5	0	5	3
Fox Cities	35	41	76	67
Jefferson	3	2	5	4
Kenosha	14	17	31	28
Lakeshore	10	16	26	19
North Central	10	9	19	15
NE/NWISH	10	4	14	8
Northwest	4	1	5	1

Coalition	HH w/out kids	HH w/kids	Total HH	Compare (Nov 2022)
Ozaukee	3	4	7	7
Rock-Walworth	8	8	16	10
Rural North	5	1	6	3
Southwest	2	1	3	1
Washington	13	16	29	22
Waukesha	7	4	11	5
West Central	17	19	36	24
WinnebagoLand	28	36	64	69
TOTAL			540	465

	Feb 2019	Feb 2020	Feb 2021	Feb 2022	May 2022	Aug 2022	Nov 2022	Feb 2023
Total	236	310	344	600	586	706	465	540

Improving the System

- **3 Key Questions:**
 - Do you have the “right projects” in your coalition?
 - Do you have the “right funding” for those projects?
 - Do you have the “right amount” of permanent housing options available for those in need?
- **Right Projects:** What does your current need tell you about what resources or tools need to be changed?
 - Permanent Supportive Housing (PSH) level – ongoing, longer term assistance to address mental health and AODA
 - Rapid Re-housing with Intensive Case Management (RRH ICM) – more intense, flexible case management, follow up
 - Rapid Re-housing (RRH) – light touch case management
- **Right Funding:** CoC & ESG (government funding) are just a few tools in the toolbox. It cannot end homelessness by itself.
 - There are specific things these funding sources cannot pay for (i.e. access to internet, gas cards).
 - There are specific priorities for the government funding, where foundation funding can be flexible or target the areas that remain unmet.
- **Right Amount:** Permanent housing options includes creative housing solutions that meet individual needs
 - Requires active recruitment, education, and support for landlords
 - Requires advocacy and commitment for more housing units available to those with imperfect records and low/no income
 - Requires adding vouchers when possible, targeting subpopulation needs (youth, domestic violence survivors, veterans, etc.), and creating flow between Section 8 and those exiting PSH programs (i.e. moving on or up)

Top 5 Things Needed to End Homelessness

Strong Coalition

- Diverse perspectives including people with lived experience
- Focused on ending homelessness, not managing it
- Willing to be creative and focused on needs of the population

Strong Homeless Crisis Response System

- Ensure that the system includes: prevention, diversion, outreach, intake & assessment, emergency services, housing solutions, and case management
- How much of each service is needed, what performance is expected, what outcomes are reached, what can be improved?
- Enhance coordinated entry system to ensure all people experiencing homelessness have access to prioritization list referral

Commitment to Ending Homelessness

- Case conferencing, problem solving, and seeking permanent housing solutions for everyone identified as homeless
- Enhanced case management with team approach across sectors (including mental health and addiction services & supports), using housing first philosophy, being client centered and trauma informed
- Focus on reducing inflow into the system and increasing outflow with positive client outcomes

Top 5 Things Needed to End Homelessness

Affordable Housing

- Must have places for people to live
- Units must be affordable (below 60% County Median Income, focus on 0-30% County Median Income)
- Units must be accessible and meet basic housing quality standards (safe and sanitary)
- Units must be rent reasonable and within fair market rent for the community

Landlords of Existing Properties

- Willing to work with people who are seeking to end their homelessness
 - Issues with credit or no credit
 - Negative rental history or no rental history
 - Criminal background
- Willing to accept housing vouchers
- Willing to make necessary repairs to bring units into compliance with basic housing quality standards



RACIAL DISPARITY REPORTS (HMIS)

NOFO Racial Disparities Assessment

As part of the CoC Competition, ICA created a set of Racial Disparities reports or dashboards. These can be run as the CoC or as a local coalition. I asked ICA to prepare them for each coalition.

BOS staff will be sending them to the coalitions they support end of Nov/beginning of Dec.



The reports were run for 7/1/2021 – 6/30/2022.



There are 2 reports:

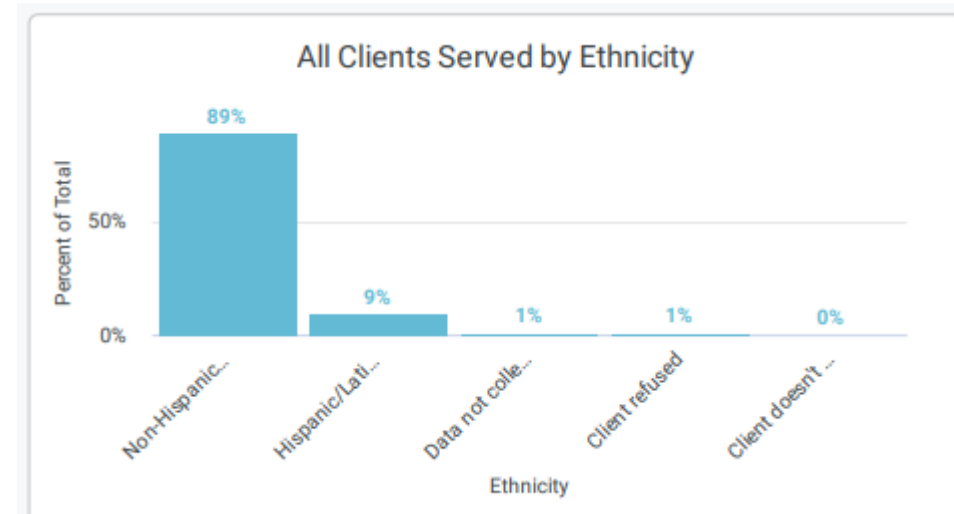
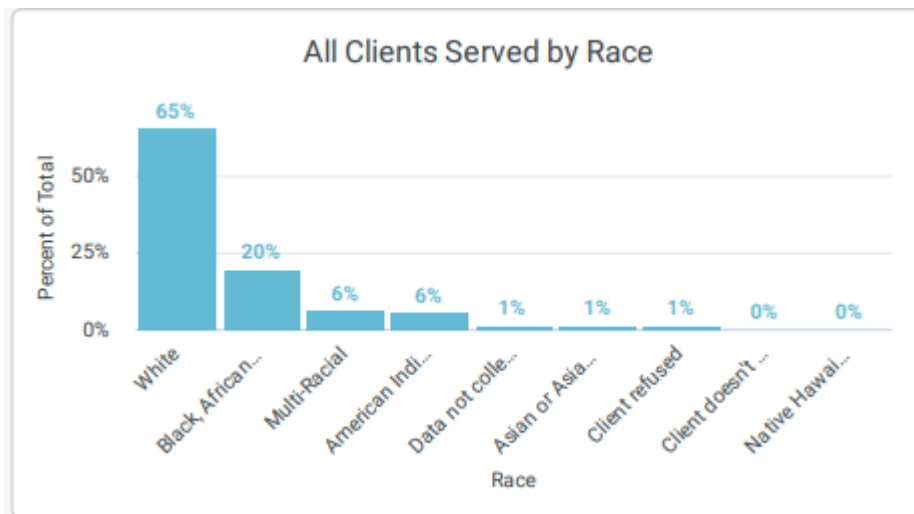
NOFO Racial Disparities Summary – this includes race and ethnicity

Equity Analysis in Program Outcomes - this includes race and ethnicity

Racial Disparity Summary Report

- Out of every 10,000 people living in the Balance of State CoC 29 people experienced homelessness between 7/1/21 – 6/30/22.
- When looking at who experiences homelessness by race:
 - People who are Black or African American are **14.4 times** as likely to experience homelessness compared to people who are White in the Balance of State CoC.
 - Native Hawaiian or Pacific Islander **8 times**
 - American Indian or Alaskan Native **6.4 times**
 - Multi-Racial **1.6 times**
 - Asian or Asian American **0.55 times**
- When looking at who experiences homelessness by race:
 - People who are Hispanic/Latin(a)(o)(x) are **1.7 times** as likely to experience homelessness compared to non-Hispanic/non-Latin(a)(o)(x) in the Balance of State CoC.

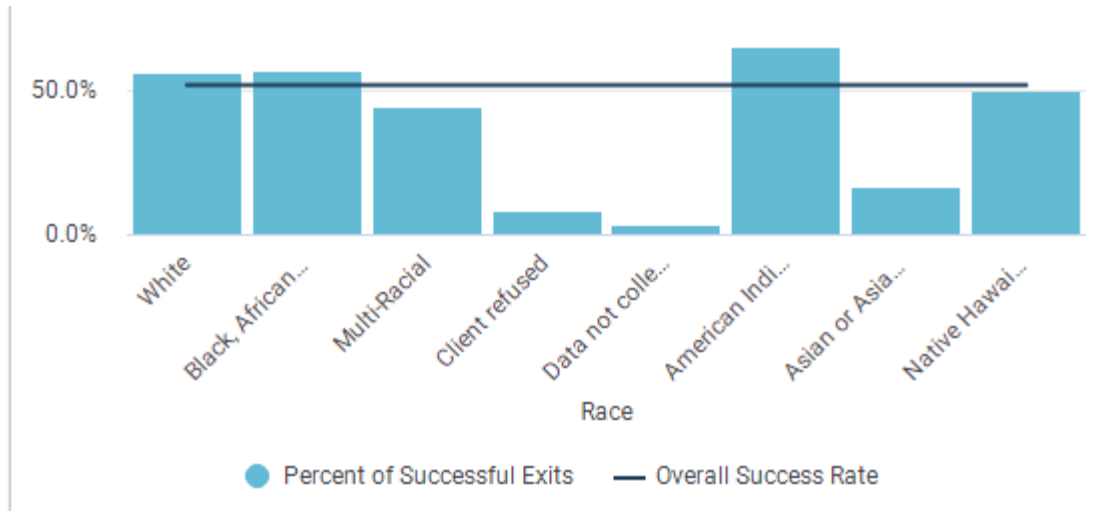
“All Clients Served by Race” – programs that record data in HMIS; emergency shelter, safe haven, transitional housing, PATH, ESG, & those entering permanent housing programs.



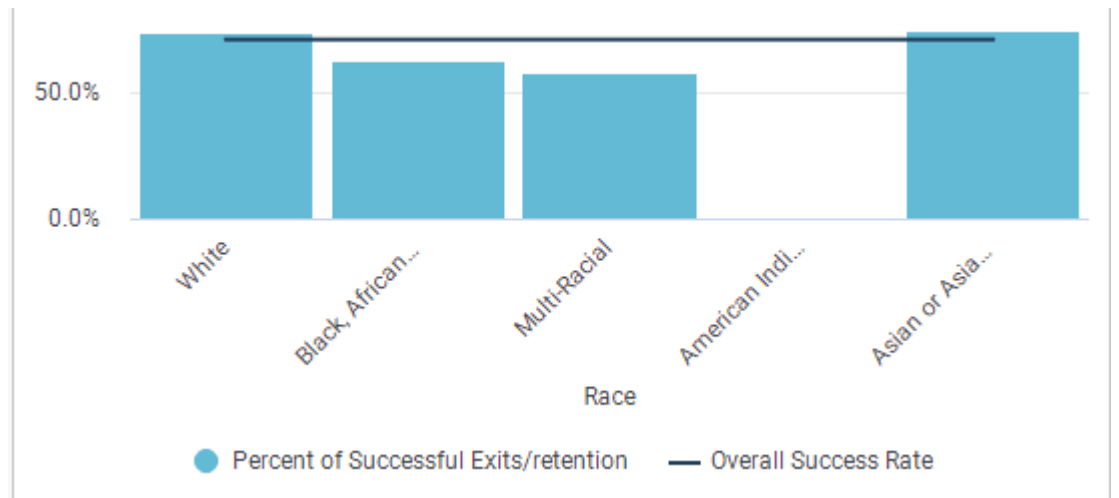
While people who are Black/African American, Native Hawaiian/Pacific Islander, American Indian/Alaskan Native, and Multi-racial are more likely to experience homelessness than people who are White, they **are not** more likely to enter programs.

While people who are Hispanic/Latin(a)(o)(x) are more likely to experience homelessness than people who are Non-Hispanic/Non-Latin(a)(o)(x), they **are not** more likely to enter programs.

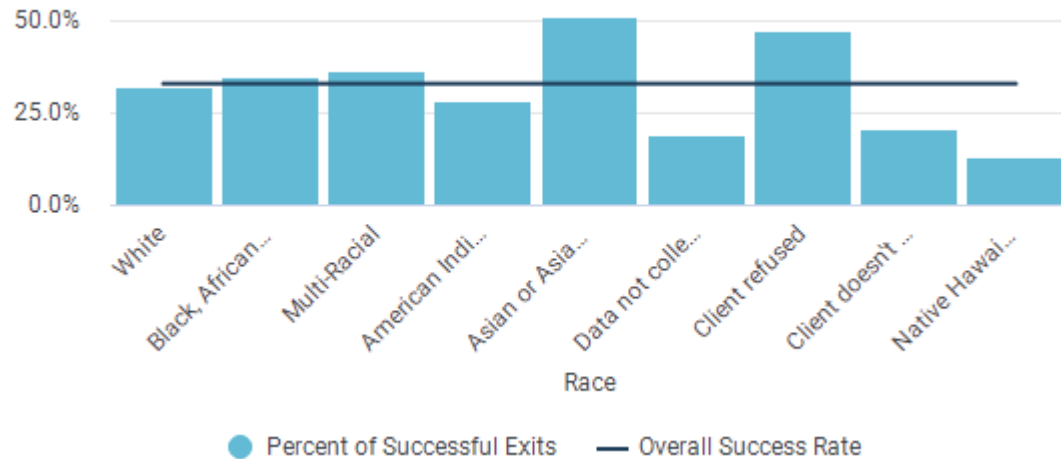
% of Successful Street Outreach Exits



% of Successful PH Exits

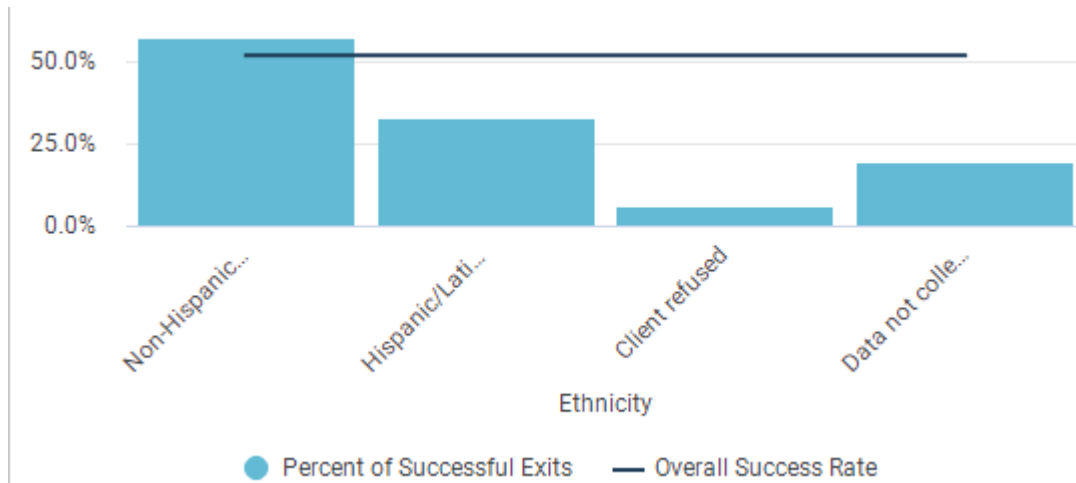


% of Successful ES, SH, TH, RRH Exits

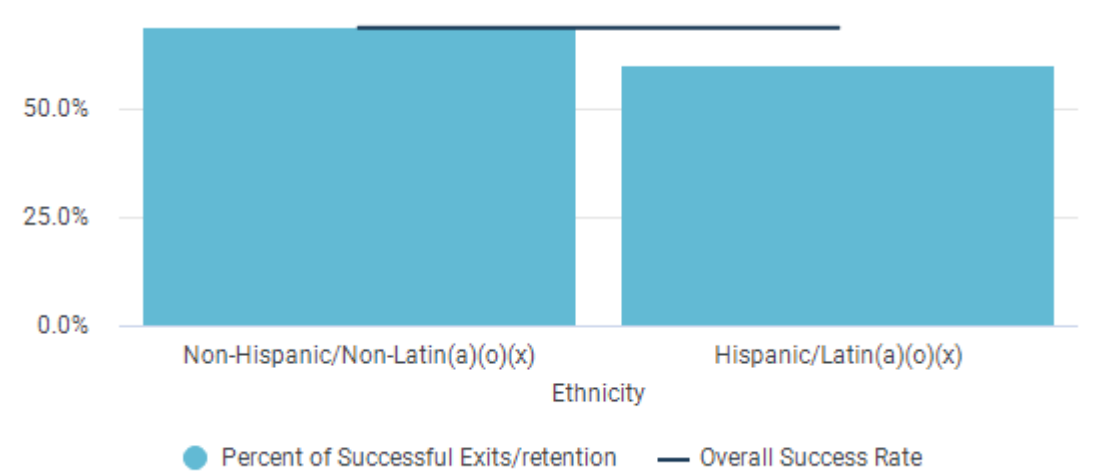


ES = Emergency Shelter
 SH = Safe Haven
 TH = Transitional Housing
 RRH = Rapid Rehousing
 PSH = Permanent Housing (non-RRH)

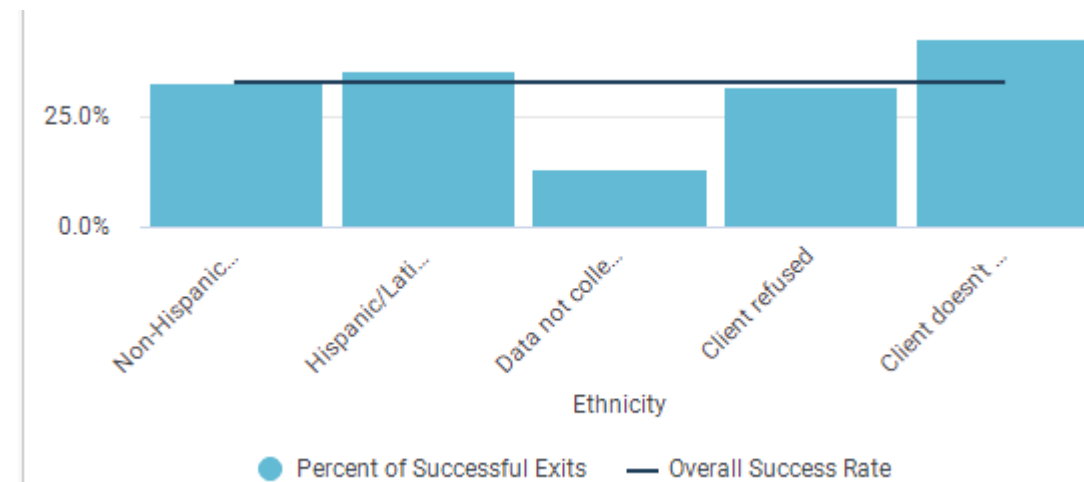
% of Successful Street Outreach Exits



% of Successful PH Exits



% of Successful ES, SH, TH, RRH Exits



ES = Emergency Shelter
 SH = Safe Haven
 TH = Transitional Housing
 RRH = Rapid Rehousing
 PSH = Permanent Housing (non-RRH)

Contact Information



Carrie Poser

CoC Director

Wisconsin Balance of State CoC

carrie.poser@wibos.org

PO Box 272, Eau Claire, WI 54702

Phone: 715-598-3301

Website: www.wiboscoc.org