

ENDING HOMELESSNESS & COORDINATED ENTRY

Carrie Poser

CoC Director, WI Balance of State CoC

November 2022

POINT-IN-TIME

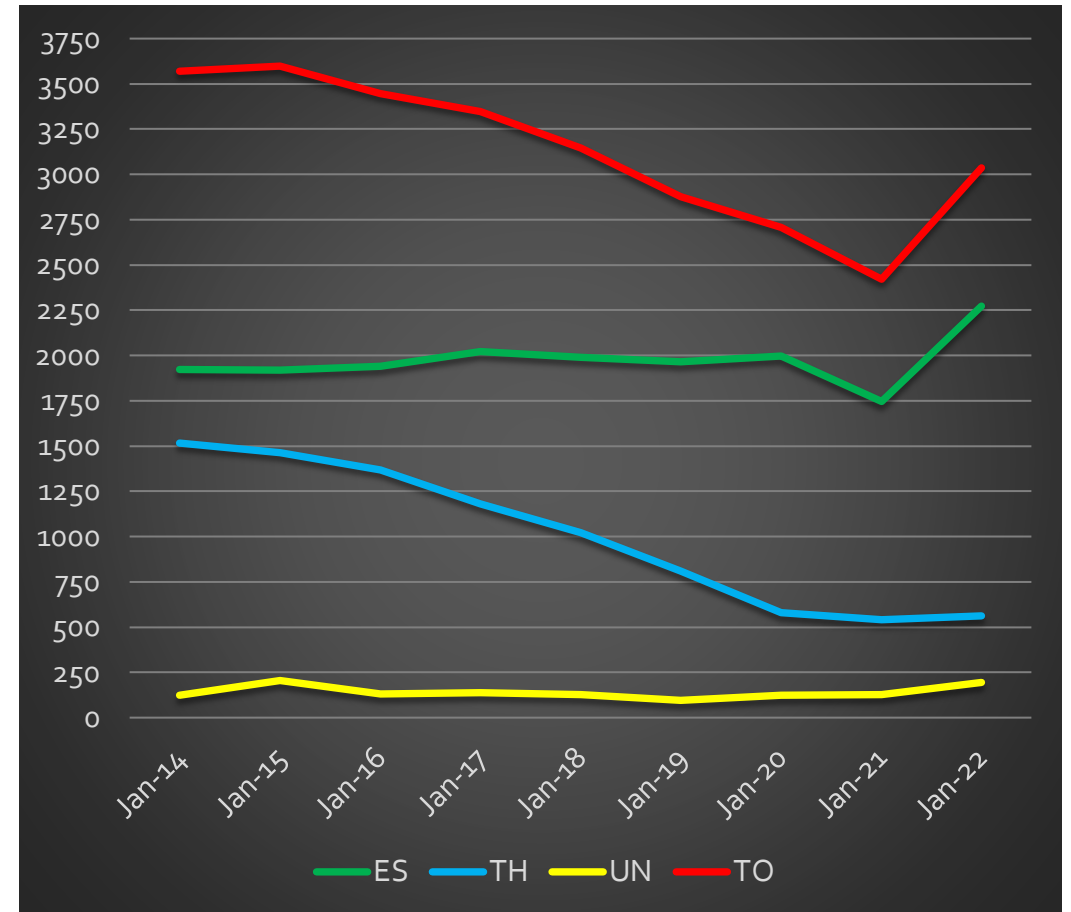
Point-in-Time – Balance of State CoC



	Jan 2014	Jan 2015	Jan 2016	Jan 2017	Jan 2018	Jan 2019	Jan 2020	Jan 2021	Jan 2022
ES	1924	1920	1939	2023	1990	1966	1997	1745	2274
TH	1515	1463	1367	1181	1023	809	580	541	562
SH	7	7	7	7	7	6	6	5	6
UN	123	207	132	137	127	94	125	129	195
Total	3569	3597	3445	3348	3147	2875	2708	2420	3037

Point-in-Time:

- 4th Wednesday Jan & July
- Includes sheltered & unsheltered, domestic violence providers, non-gov't funded projects
- Snapshot of community



ES = Emergency Shelter/Motel Voucher
 TH = Transitional Housing
 SH = Safe Haven
 UN = Unsheltered
 TO = Total

Point-in-Time: Unsheltered



Coalition	Jan. 2021 HH/People	July 2021 HH/People	Jan. 2022 HH/People	July 2022 HH/People	Compare July 2021 to 2022
Brown	11 HH, 16 people	42 HH, 42 people	22 HH, 28 people	75 HH, 89 people	+33 HH, +47 people
Central	5 HH, 5 people	13 HH, 18 people	5 HH, 5 people	11 HH, 15 people	-2 HH, -3 people
Coulee	8 HH, 8 people	90 HH, 90 people	6 HH, 6 people	136 HH, 140 people	+46 HH, +50 people
Dairyland	9 HH, 12 people	40 HH, 40 people	26 HH, 26 people	30 HH, 34 people	-10 HH, -6 people
East Central	4 HH, 4 people	17 HH, 17 people	0	0	-17 HH, -17 people
Fox Cities	13 HH, 18 people	32 HH, 41 people	19 HH, 19 people	38 HH, 40 people	+6 HH, - 1 person
Jefferson	1 HH, 1 person	0	0	7 HH, 7 people	+7 HH, +7 people
Kenosha	5 HH, 5 people	7 HH, 7 people	19 HH, 24 people	17 HH, 23 people	+10 HH, +16 people
Lakeshore	5 HH, 12 people	11 HH, 11 people	6 HH, 7 people	15 HH, 18 people	+4 HH, +7 people
North Central	8 HH, 8 people	21 HH, 21 people	0	31 HH, 31 people	+10 HH, +10 people
Northeast	1 HH, 1 person	9 HH, 13 people	4 HH, 6 people	3 HH, 3 people	-6 HH, -10 people
Northwest	0	4 HH, 7 people	17 HH, 37 people	14 HH, 16 people	+10 HH, +9 people

Point-in-Time: Unsheltered



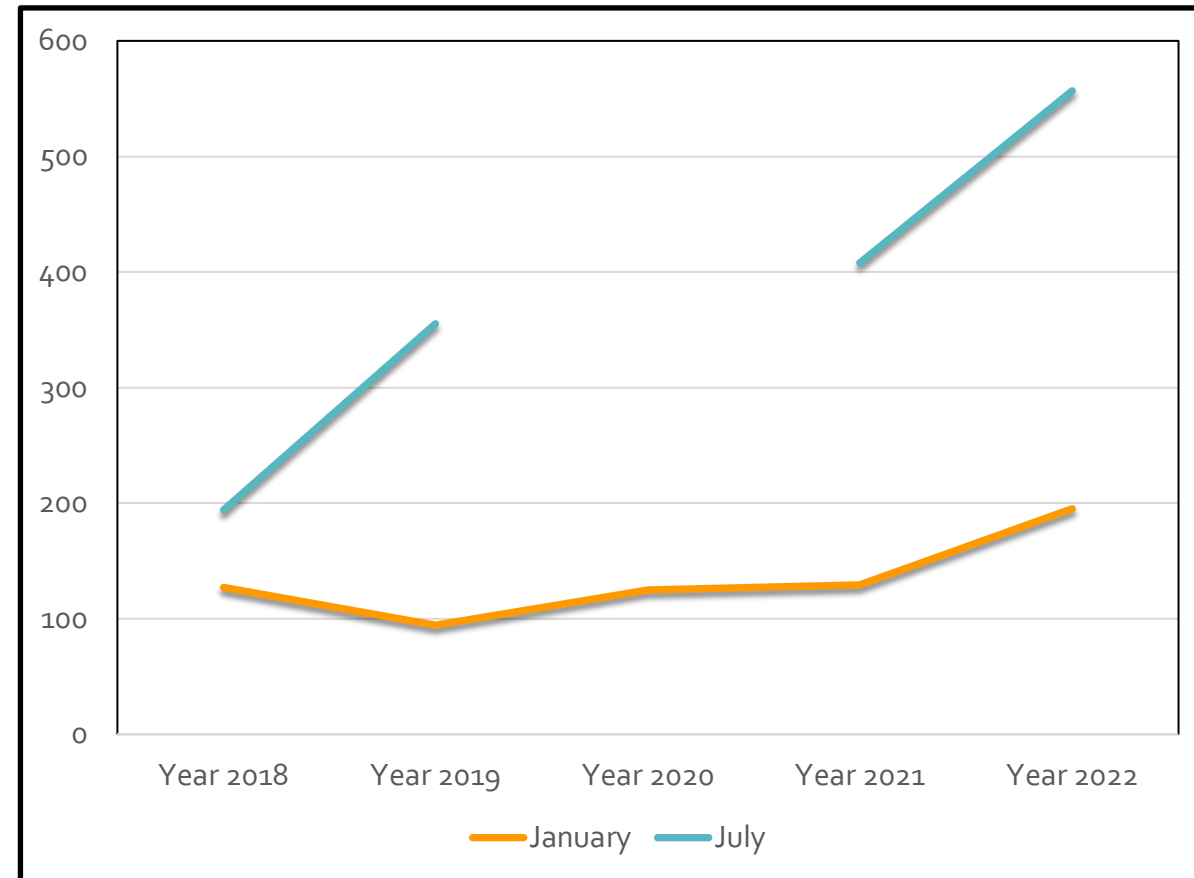
Coalition	Jan. 2021 HH/People	July 2021 HH/People	Jan. 2022 HH/People	July 2022 HH/People	Compare July 2021 to 2022
NWISH	0	2 HH, 2 people	1 HH, 1 person	0	-2 HH, - 2 people
Ozaukee	3 HH, 3 people	1 HH, 1 person	0	0	-1 HH, 1 person
Rock-Walworth	8 HH, 11 people	14 HH, 16 people	1 HH, 1 person	3 HH, 3 people	-11 HH, -13 people
Rural North	3 HH, 3 people	9 HH, 13 people	1 HH, 4 people	6 HH, 6 people	-3 HH, -7 people
Southwest	2 HH, 2 people	15 HH, 15 people	4 HH, 6 people	15 HH, 25 people	Same HH, +10 people
Washington	2 HH, 2 people	0	2 HH, 2 people	0	Same HH & people
Waukesha	14 HH, 14 people	14 HH, 14 people	16 HH, 20 people	31 HH, 31 people	+17 HH, +17 people
West Central	0	0	1 HH, 2 people	8 HH, 13 people	+8 HH, +13 people
WinnebagoLand	4 HH, 4 people	31 HH, 35 people	1 HH, 1 person	52 HH, 61 people	+21 HH, +26 people
TOTAL	114 HH 129 people	377 HH 408 people	151 HH 195 people	493 HH 557 people	+116 HH +149 people

Point-in-Time – Unsheltered



	Jan 2018	Jan 2019	Jan 2020	Jan 2021	Jan 2022
# HH	106	83	109	114	151
# People	127	94	125	129	195

	July 2018	July 2019	July 2021	July 2022
# HH	165	306	377	493
# People	194	355	408	557





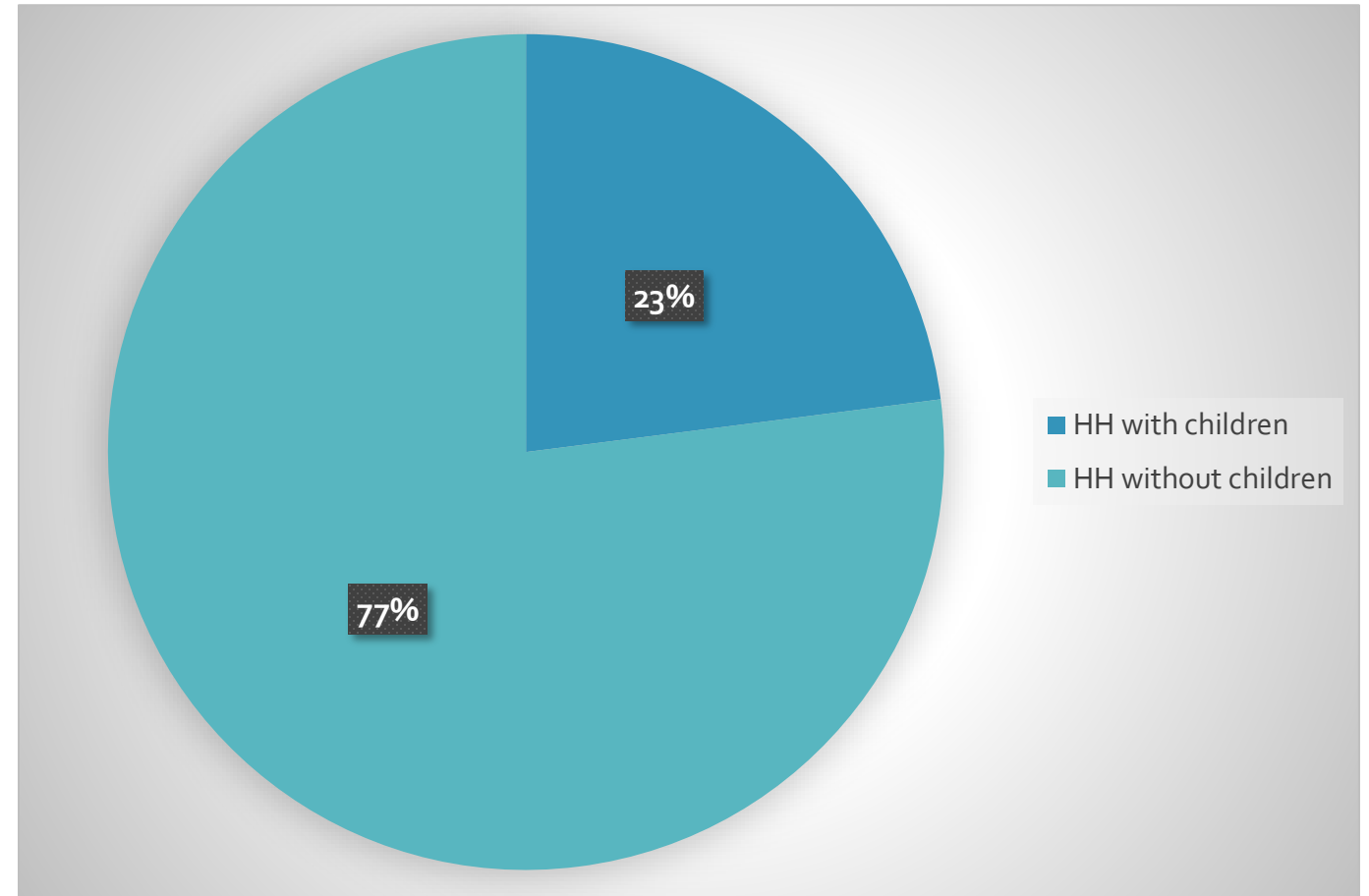
COORDINATED ENTRY

Homelessness by Household Type



	Feb 2020	Feb 2021	Feb 2022
HH w/out	2,093 74%	1360 74%	1625 79%
HH with	722 26%	475 26%	421 21%

	May 2022	Aug 2022	Nov 2022
HH w/out	1,711 79%	1,809 80%	1,759 77%
HH with	453 21%	462 20%	525 23%



According to CE Data 11.14.22

WI Balance of State CoC - Coordinated Entry



HH without Children	11/14/22	8/8/22	5/4/22
Currently waiting on PL	1,759 people	1,809 people	1,711 people
Chronic Homeless	341 people	334 people	327 people
Veterans	81 people	63 people	72 people
Youth (18-24)	141 people	139 people	152 people
DV survivors (HMIS)	162 people	NA	NA
Average Length of Time (LOT) on list	133.59 days	106.7 days	122.4 days
Longest LOT	1,372 days	1,271 days	1,274 days

HH with Children	11/14/22	8/8/22	5/4/22
Currently waiting on PL	525 HH	453 HH	462 HH
Chronic Homeless	35 people	25 people	33 people
Veterans	6 people	6 people	9 people
Youth (18-24)	77 people	58 people	52 people
DV survivors (HMIS)	134 people	NA	NA
Average Length of Time (LOT) on list	107.83 days	95.7 days	97.5 days
Longest LOT	758 days	694 days	660 days

WI Balance of State CoC - Coordinated Entry



Level of Needed Support	# HH w/out children	Average months homeless	# HH w/ children	Average months homeless	# Housing Solutions Nov 2022	# Housing Solutions Aug 2022
<u>Permanent Supportive Housing</u> Chronic with disability (more than 12 months homeless)	353	30.29	34	23.35	521 (22.8%)	505 (22%)
Non-Chronic with disability & more than 12 months homeless	106	23.37	28	7.66		
<u>Rapid Re-housing with intensive case management</u> Non-Chronic with disability & less than 12 months homeless	562	4.83	103	6.35	1,021 (44.7%)	1,068 (47%)
Non-Chronic without a disability & more than 12 months homeless	306	30.89	50	11.2		
<u>Rapid Re-housing</u> Non-Chronic without a disability	433	4.77	310	7.46	743 (32.5%)	702 (31%)
Total	1,760		525		2,285	2,275

According to CE Data 11.14.22

Definitions



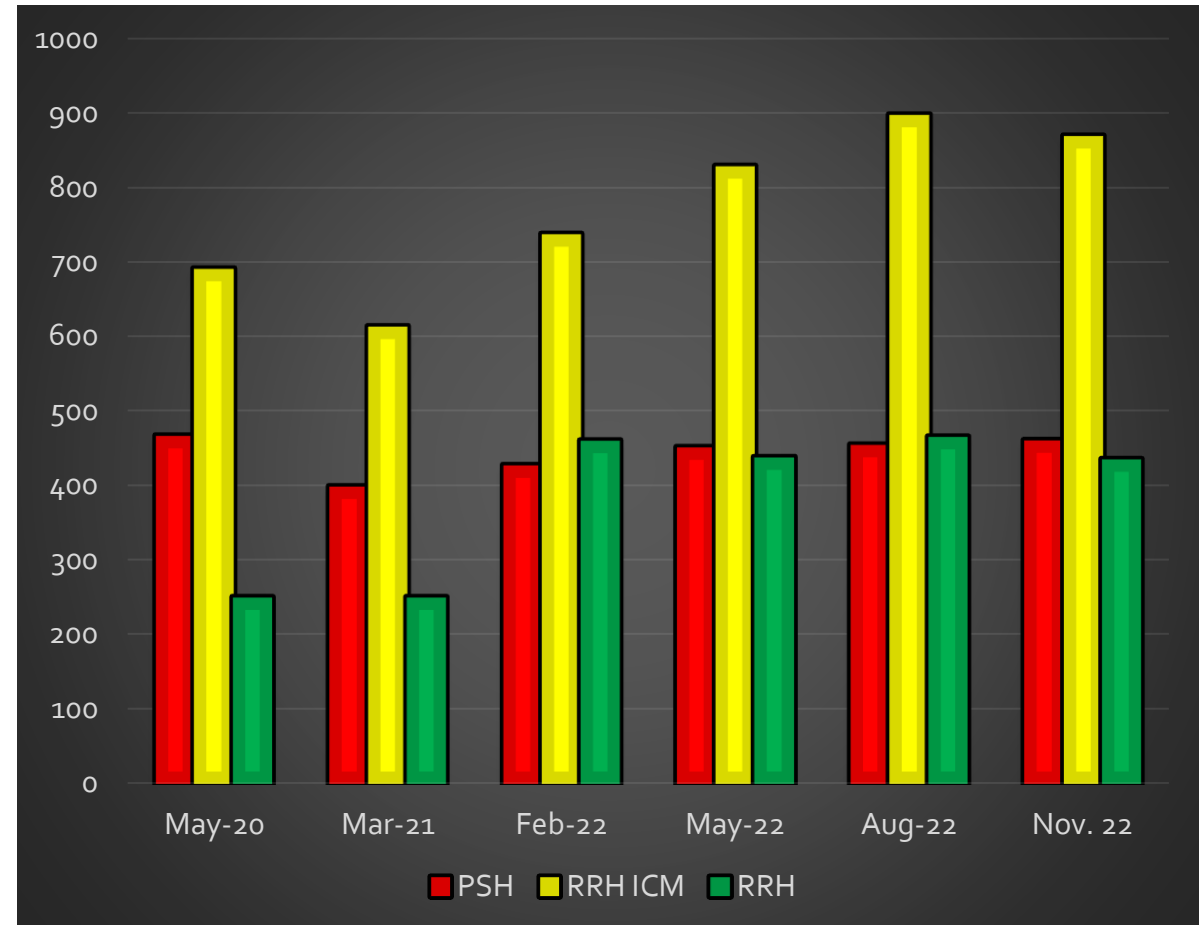
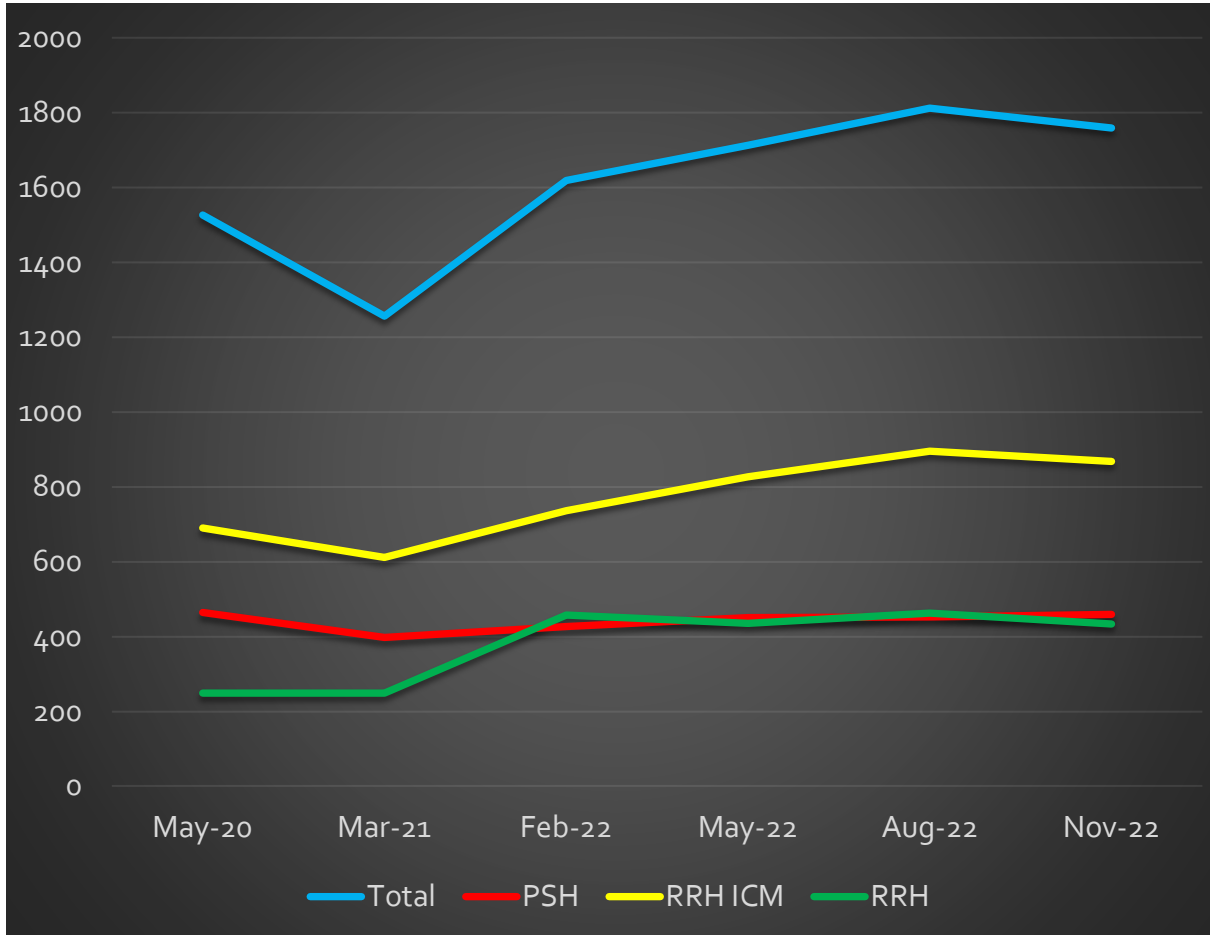
- **CH** = Meets Chronic Homeless Definition
 - Disability
 - Category 1 homeless situation (place not meant for human habitation or shelter)
 - Homeless for 12 consecutive months or 4 times within 3 years that totals 12 months

- **CH – 2nd priority** = does not meet chronic homeless definition
 - Disability
 - Category 1 homeless situation (place not meant for human habitation or shelter)
 - Homeless for 12 non-consecutive months or less than 4 times within 3 years

- **RRH w/ICM (intensive case management)** = does not meet chronic homeless definition
 - Disability, less than 12 months of homelessness AND
 - Without a disability, 12 months or more of homelessness

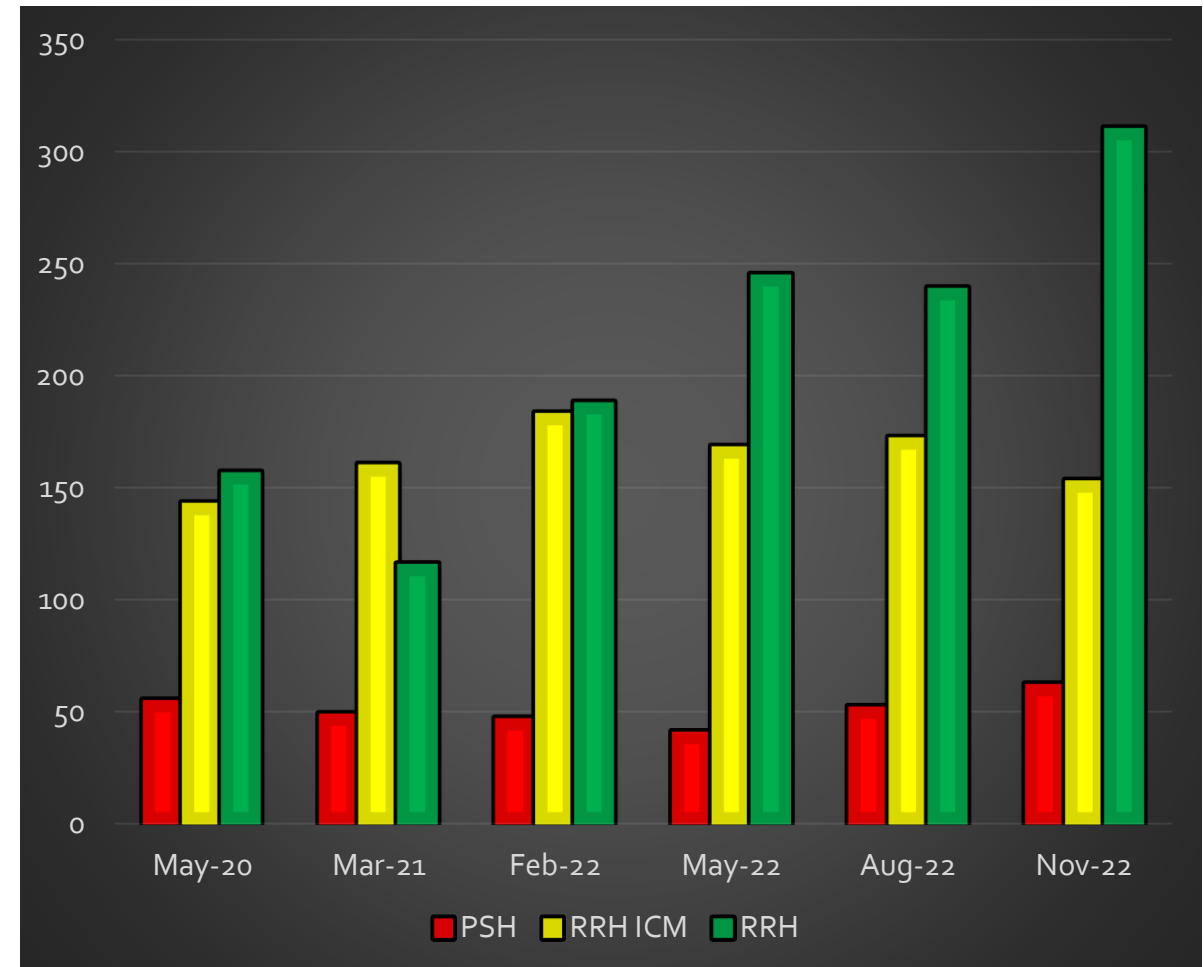
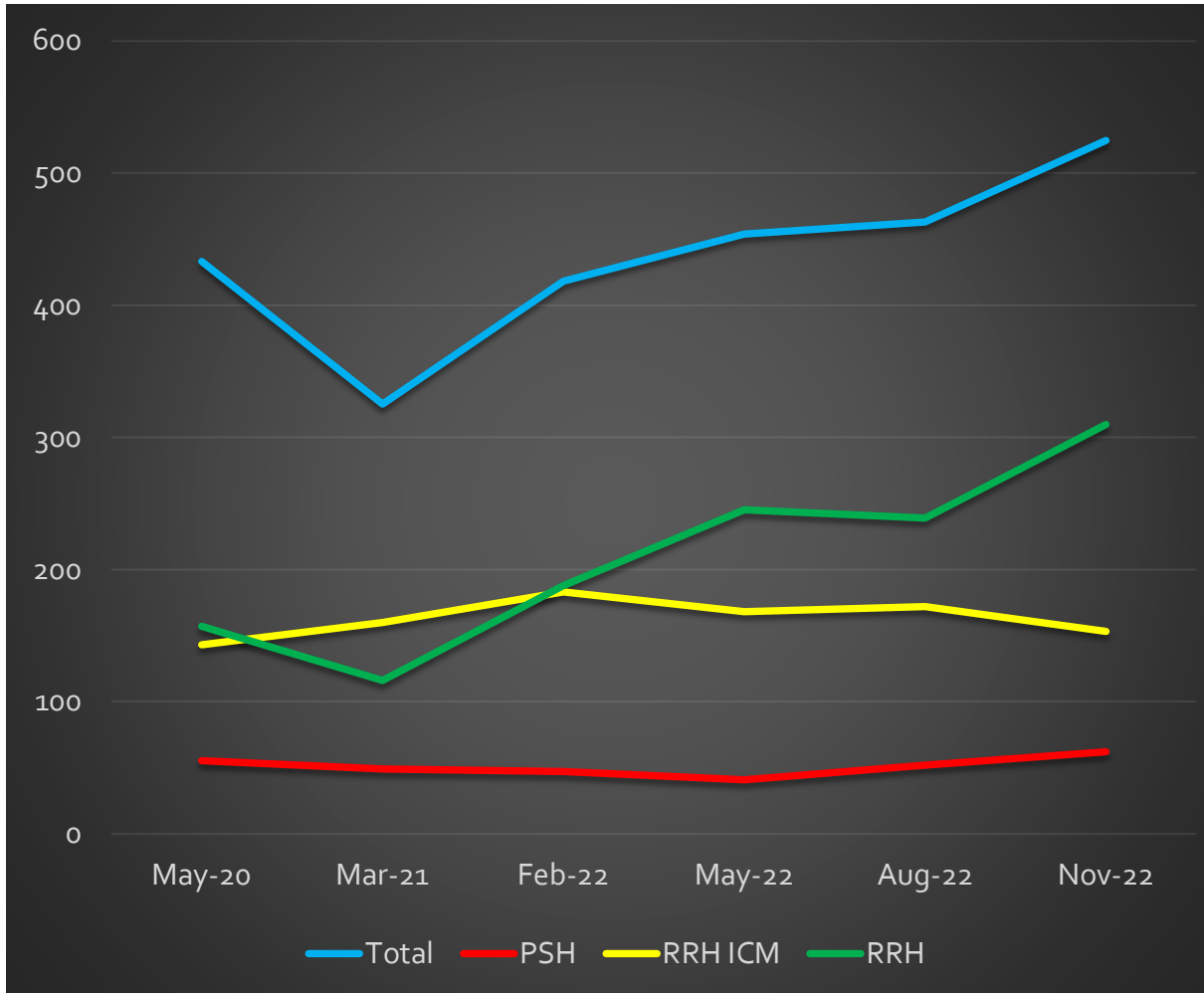
- **RRH** = does not meet chronic homeless definition
 - Without a disability, less than 12 months of homelessness

Households without Children – Permanent Housing Solutions Needed



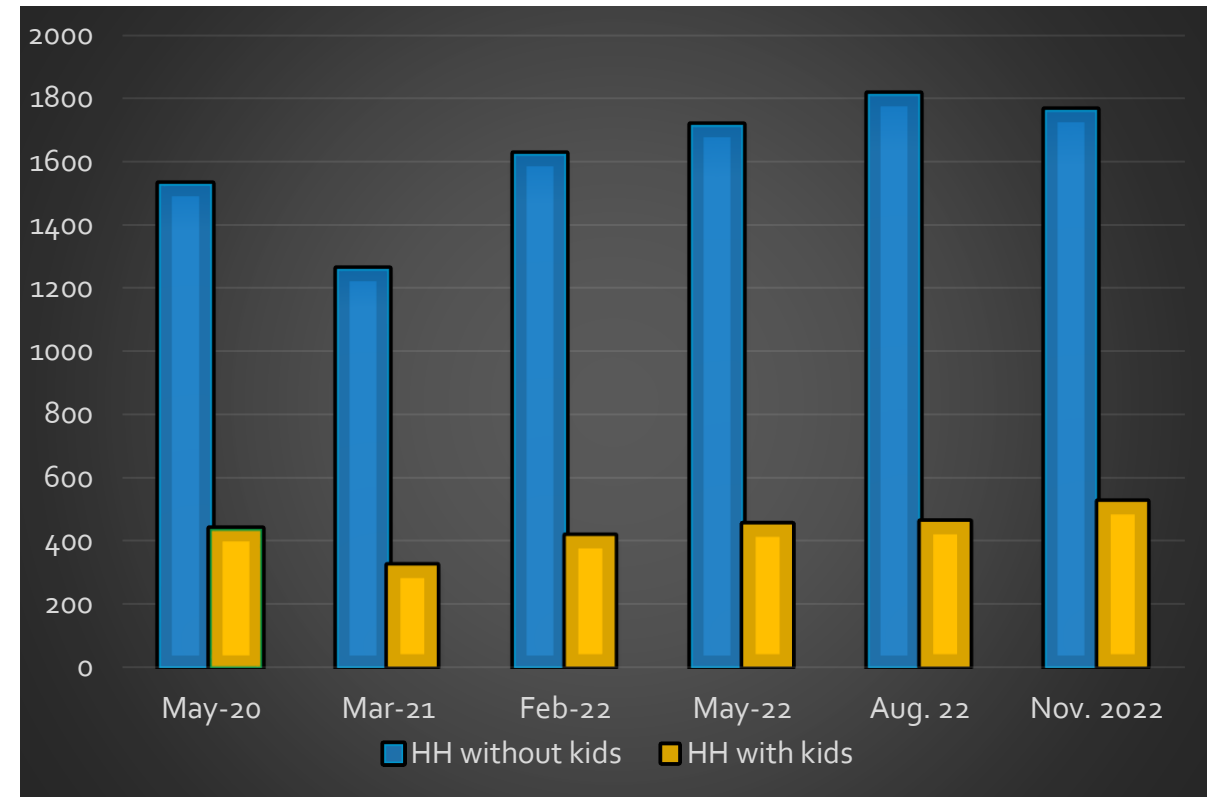
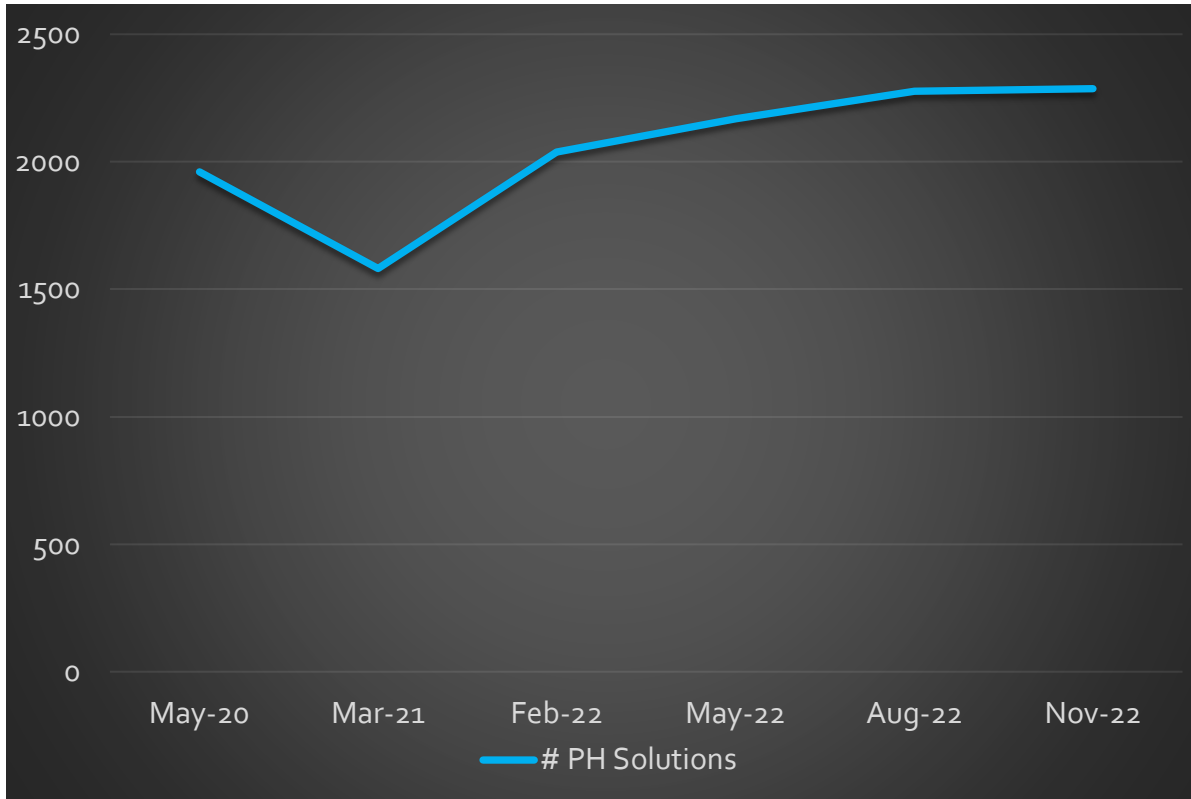
Balance of State CE Data (May 2020; March 2021; Feb, May, Aug & Nov 2022) – as of 11/14/22

Households with Children – Permanent Housing Solutions Needed



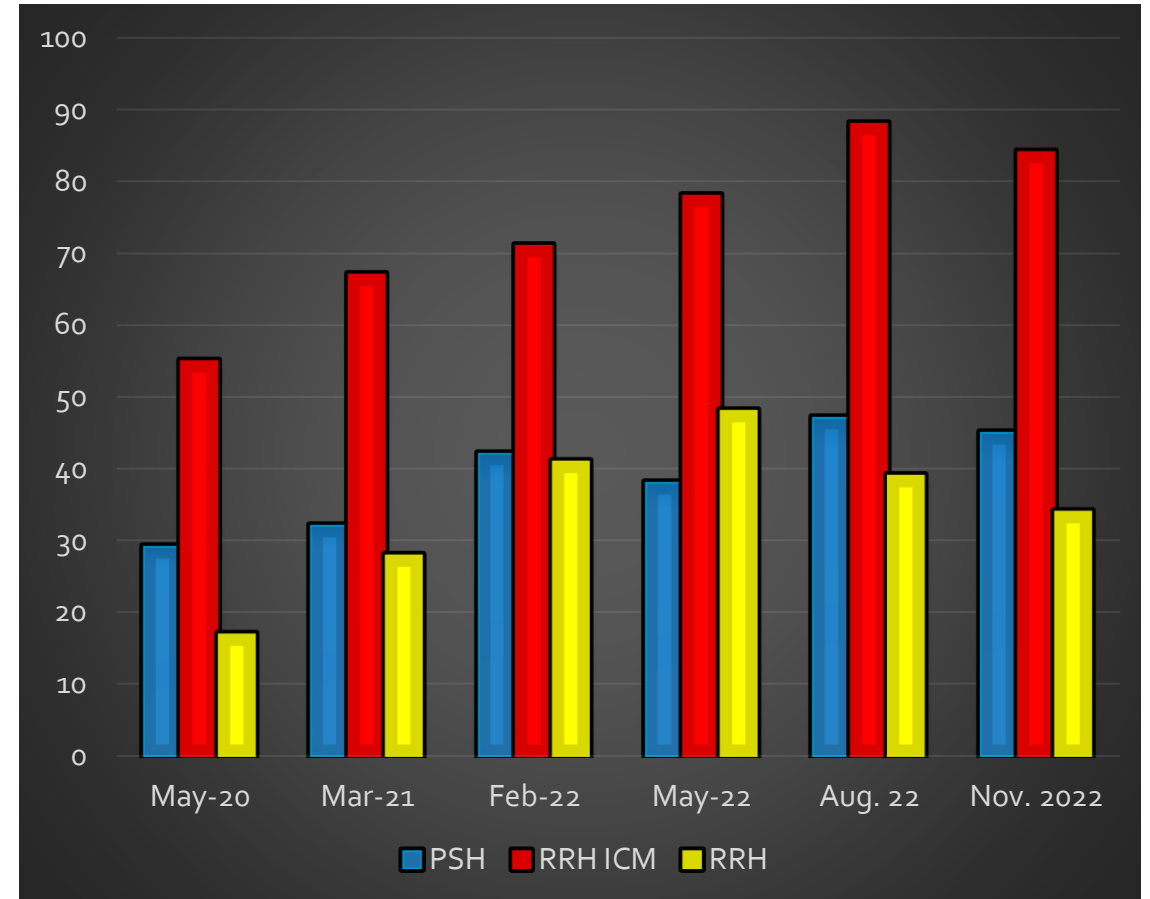
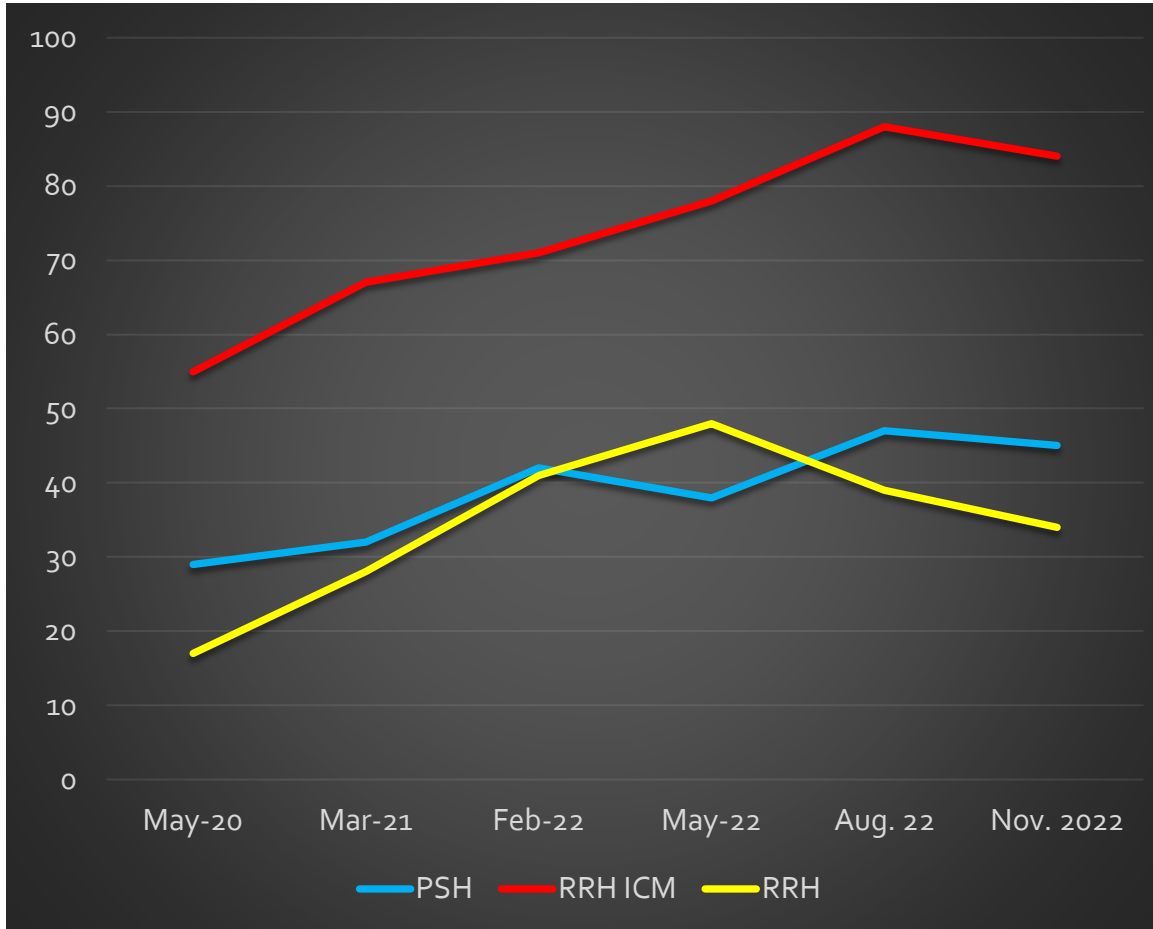
Balance of State CE Data (May 2020; March 2021; Feb, May, Aug & Nov 2022) – as of 11/14/22

Total Permanent Housing Solutions Needed



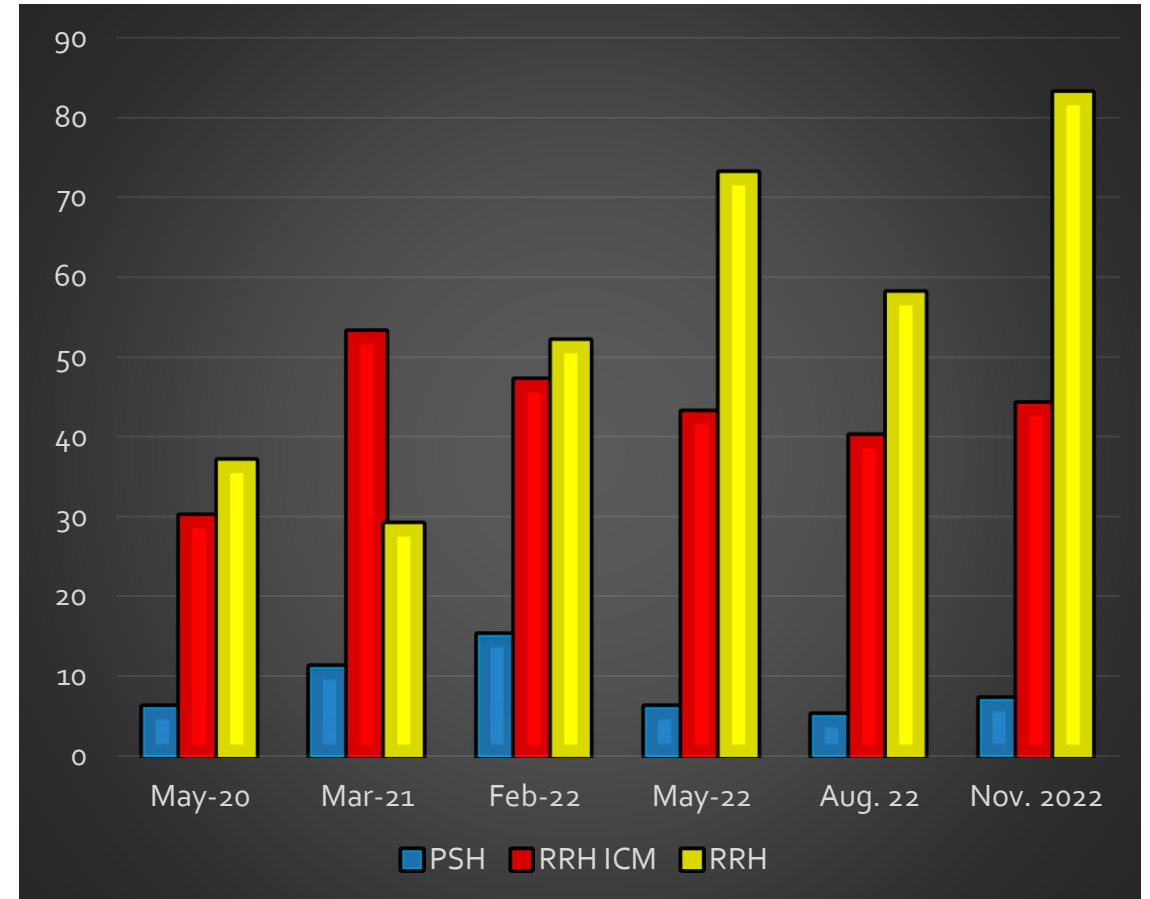
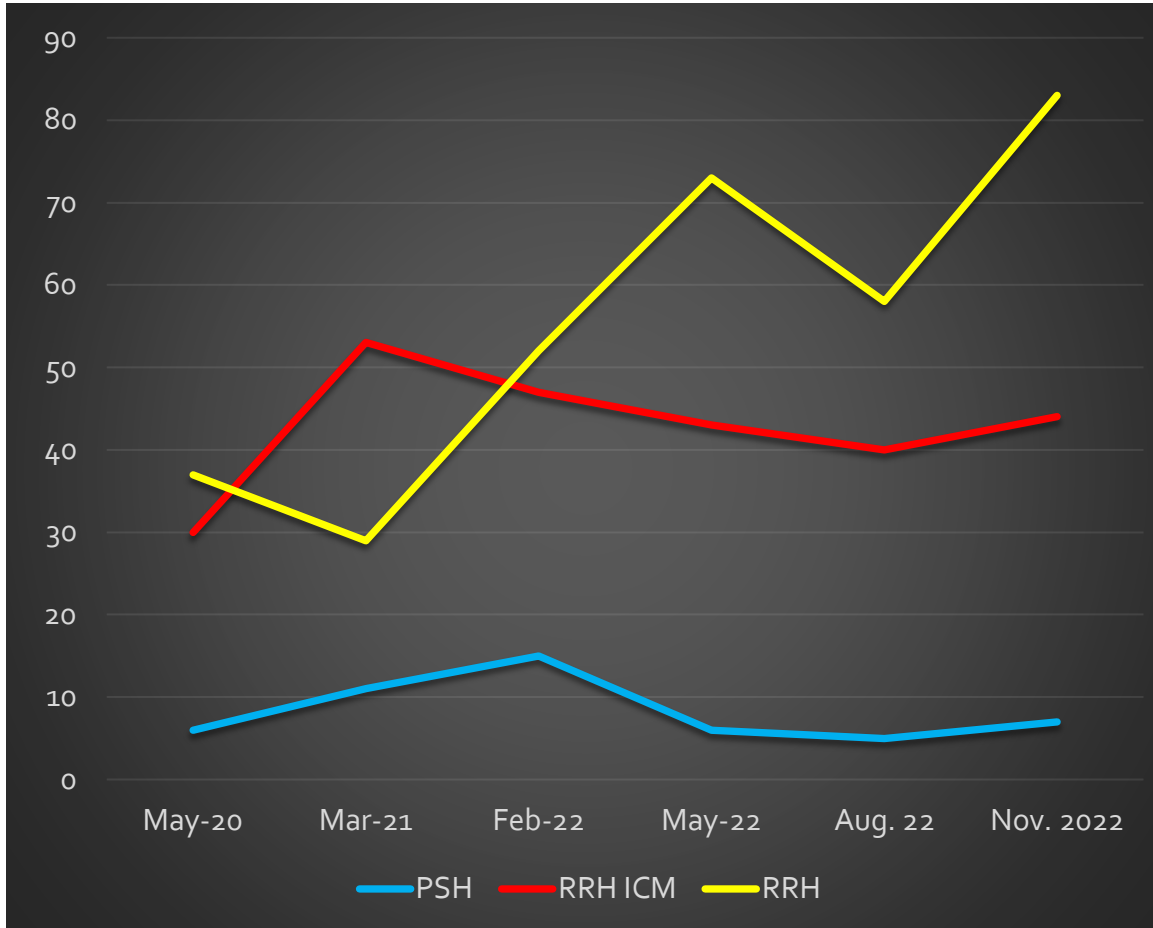
Balance of State CE Data (May 2020; March 2021; Feb, May, Aug & Nov 2022) – as of 11/14/22

Survivors of DV (Households without children) – Permanent Housing Solutions Needed



Balance of State CE Data (May 2020; March 2021; Feb, May, Aug & Nov 2022) – as of 11/14/22

Survivors of DV (Households with children) – Permanent Housing Solutions Needed



Balance of State CE Data (May 2020; March 2021; Feb, May, Aug & Nov 2022) – as of 11/14/22

Coordinated Entry – HMIS Prioritization



Coalition	HH w/out kids	HH w/kids	Total HH Nov 2022	Total HH Aug 2022	Average # days on list HH w/o	Average # days on list HH w
Brown	258	130	388	342	156.1	117.9
Central	56	21	77	125	37.4	70.7
Coulee	217	36	253	247	183.2	113.3
Dairyland	248	53	301	288	100.3	97.5
East Central	62	17	79	129	87.8	80.9
Fox Cities	219	58	277	229	108.5	91.3
Jefferson	24	20	44	49	92.9	79.3
Kenosha	99	57	156	126	95.6	125.4
Lakeshore	90	33	123	116	88.3	71.7
North Central	108	24	132	136	127.8	135.7
NE/NWISH	63	47	110	62	83.4	108.5
Northwest	108	41	149	143	80.0	88.5

Coalition	HH w/out kids	HH w/kids	Total HH Nov 2022	Total HH Aug 2022	Average # days on list HH w/o	Average # days on list HH w
Ozaukee	24	15	39	36	87.8	93.9
Rock-Walworth	146	89	235	290	160.2	137.3
Rural North	86	43	129	139	83.6	109.3
Southwest	44	17	61	29	53.1	53.5
Washington	71	28	99	123	99.7	90.9
Waukesha	195	30	225	219	170.7	100.3
West Central	223	51	274	293	98.7	93.3
Winnebago-land	195	53	248	209	113.3	86.4
TOTAL			3,129	3,330		

Coordinated Entry – HMIS Prioritization



Coalition	Vet HH	CH HH	DV HH	Youth HH
Brown	9	51	65	35
Central	0	13	5	5
Coulee	20	86	25	20
Dairyland	8	95	32	26
East Central	2	8	6	4
Fox Cities	9	37	29	21
Jefferson	1	4	4	3
Kenosha	4	13	27	35
Lakeshore	5	10	12	8
North Central	4	22	12	10
NE/NWISH	3	8	29	11
Northwest	6	31	28	12

Coalition	Vet HH	CH HH	DV HH	Youth HH
Ozaukee	0	4	6	4
Rock-Walworth	5	18	45	36
Rural North	1	24	10	15
Southwest	3	8	6	7
Washington	3	9	13	9
Waukesha	6	43	18	24
West Central	8	71	36	24
Winnebago-land	7	24	27	15

Coordinated Entry – Non HMIS Prioritization



Coalition	HH w/out kids	HH w/kids	Total HH	Compare (8.8.22)
Brown	37	82	119	227
Central	10	20	30	33
Coulee	0	0	0	9
Dairyland	4	26	30	15
East Central	2	1	3	14
Fox Cities	30	37	67	81
Jefferson	1	3	4	1
Kenosha	10	18	28	53
Lakeshore	5	14	19	35
North Central	7	8	15	35
NE/NWISH	4	4	8	9
Northwest	0	1	1	4

Coalition	HH w/out kids	HH w/kids	Total HH	Compare (8.8.22)
Ozaukee	2	5	7	6
Rock-Walworth	4	6	10	38
Rural North	2	1	3	5
Southwest	0	1	1	3
Washington	9	13	22	24
Waukesha	1	4	5	14
West Central	15	9	24	21
WinnebagoLand	28	41	69	79
TOTAL			465	706

	Feb 2019	Feb 2020	Feb 2021	Feb 2022	May 2022	Aug 2022	Nov 2022
Total	236	310	344	600	586	706	465

Improving the System

- **3 Key Questions:**
 - Do you have the “right projects” in your coalition?
 - Do you have the “right funding” for those projects?
 - Do you have the “right amount” of permanent housing options available for those in need?
- **Right Projects:** What does your current need tell you about what resources or tools need to be changed?
 - Permanent Supportive Housing (PSH) level – ongoing, longer term assistance to address mental health and AODA
 - Rapid Re-housing with Intensive Case Management (RRH ICM) – more intense, flexible case management, follow up
 - Rapid Re-housing (RRH) – light touch case management
- **Right Funding:** CoC & ESG (government funding) are just a few tools in the toolbox. It cannot end homelessness by itself.
 - There are specific things these funding sources cannot pay for (i.e. access to internet, gas cards).
 - There are specific priorities for the government funding, where foundation funding can be flexible or target the areas that remain unmet.
- **Right Amount:** Permanent housing options includes creative housing solutions that meet individual needs
 - Requires active recruitment, education, and support for landlords
 - Requires advocacy and commitment for more housing units available to those with imperfect records and low/no income
 - Requires adding vouchers when possible, targeting subpopulation needs (youth, domestic violence survivors, veterans, etc.), and creating flow between Section 8 and those exiting PSH programs (i.e. moving on or up)

Top 5 Things Needed to End Homelessness

Strong Coalition

- Diverse perspectives including people with lived experience
- Focused on ending homelessness, not managing it
- Willing to be creative and focused on needs of the population

Strong Homeless Crisis Response System

- Ensure that the system includes: prevention, diversion, outreach, intake & assessment, emergency services, housing solutions, and case management
- How much of each service is needed, what performance is expected, what outcomes are reached, what can be improved?
- Enhance coordinated entry system to ensure all people experiencing homelessness have access to prioritization list referral

Commitment to Ending Homelessness

- Case conferencing, problem solving, and seeking permanent housing solutions for everyone identified as homeless
- Enhanced case management with team approach across sectors (including mental health and addiction services & supports), using housing first philosophy, being client centered and trauma informed
- Focus on reducing inflow into the system and increasing outflow with positive client outcomes

Top 5 Things Needed to End Homelessness

Affordable Housing

- Must have places for people to live
- Units must be affordable (below 60% County Median Income, focus on 0-30% County Median Income)
- Units must be accessible and meet basic housing quality standards (safe and sanitary)
- Units must be rent reasonable and within fair market rent for the community

Landlords of Existing Properties

- Willing to work with people who are seeking to end their homelessness
 - Issues with credit or no credit
 - Negative rental history or no rental history
 - Criminal background
- Willing to accept housing vouchers
- Willing to make necessary repairs to bring units into compliance with basic housing quality standards



RACIAL DISPARITY REPORTS (HMIS)

NOFO Racial Disparities Assessment

As part of the CoC Competition, ICA created a set of Racial Disparities reports or dashboards. These can be run as the CoC or as a local coalition. I asked ICA to prepare them for each coalition.

BOS staff will be sending them to the coalitions they support end of Nov/beginning of Dec.



The reports were run for 7/1/2021 – 6/30/2022.



There are 2 reports:

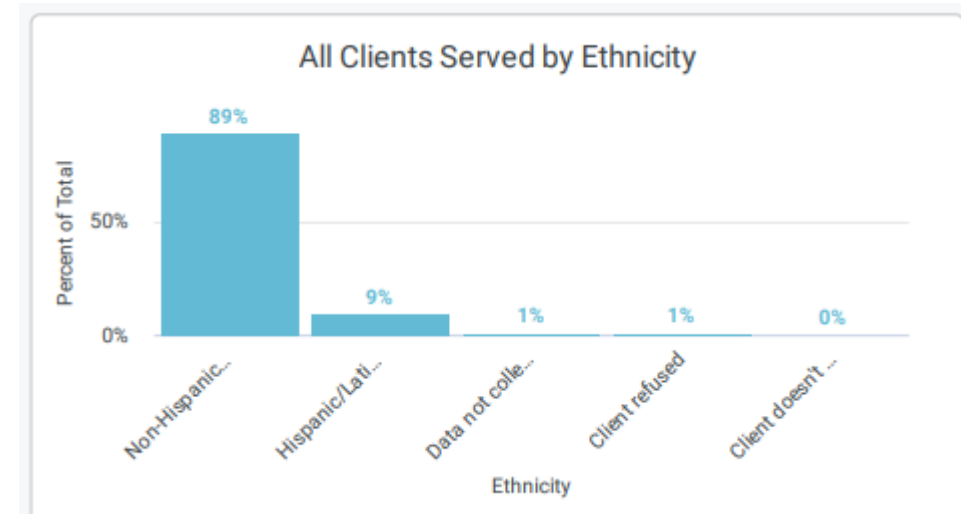
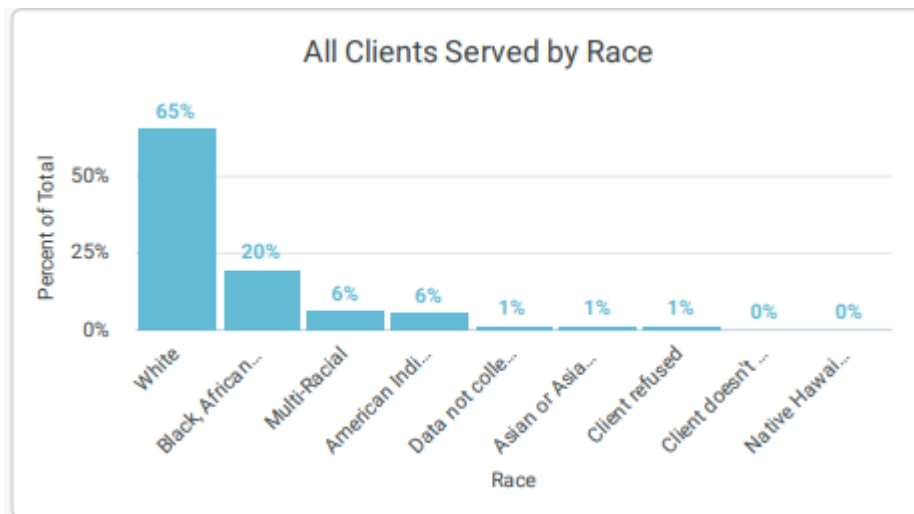
NOFO Racial Disparities Summary – this includes race and ethnicity

Equity Analysis in Program Outcomes - this includes race and ethnicity

Racial Disparity Summary Report

- The report shows the overall rate of homelessness per 10,000 residents in the CoC. This is compared with the overall rate of homelessness by race and ethnicity. If there is no disparity, the rate bars on the dashboard will be the same length. The total population comes from the US Census Bureau Decennial 2020 count and the count of clients from HMIS.
- The report shows: 29/10,000 people living in the Balance of State CoC experience homelessness (compared to 36 statewide).
- When looking at who experiences homelessness by race:
 - People who are Black or African American are **14.4 times** as likely to experience homelessness compared to people who are White in the Balance of State CoC.
 - Native Hawaiian or Pacific Islander **8 times**
 - American Indian or Alaskan Native **6.4 times**
 - Multi-Racial **1.6 times**
 - Asian or Asian American **0.55 times**
- When looking at who experiences homelessness by race:
 - People who are Hispanic/Latin(a)(o)(x) are **1.7 times** as likely to experience homelessness compared to non-Hispanic/non-Latin(a)(o)(x) in the Balance of State CoC.

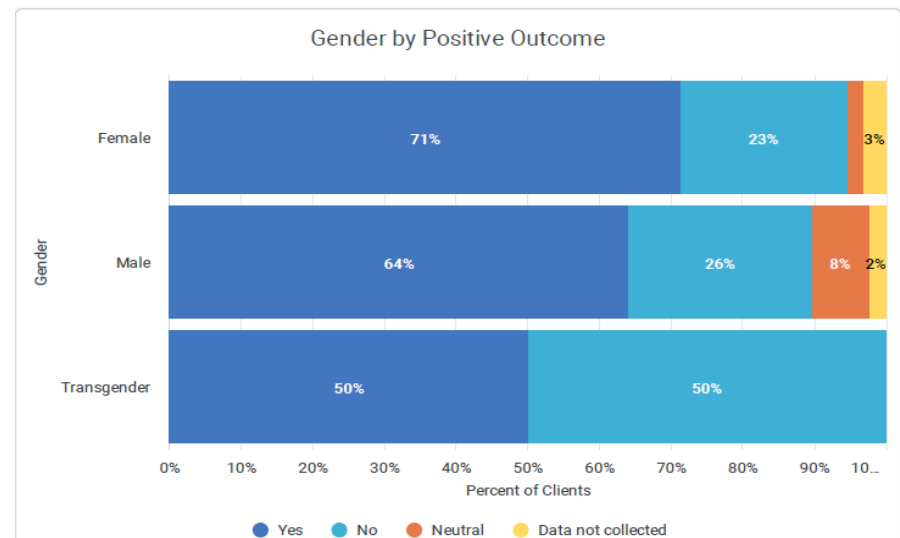
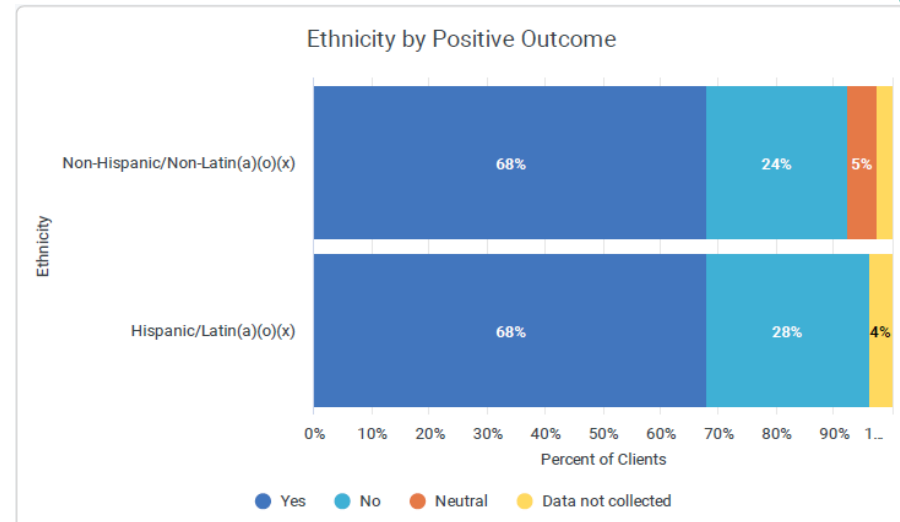
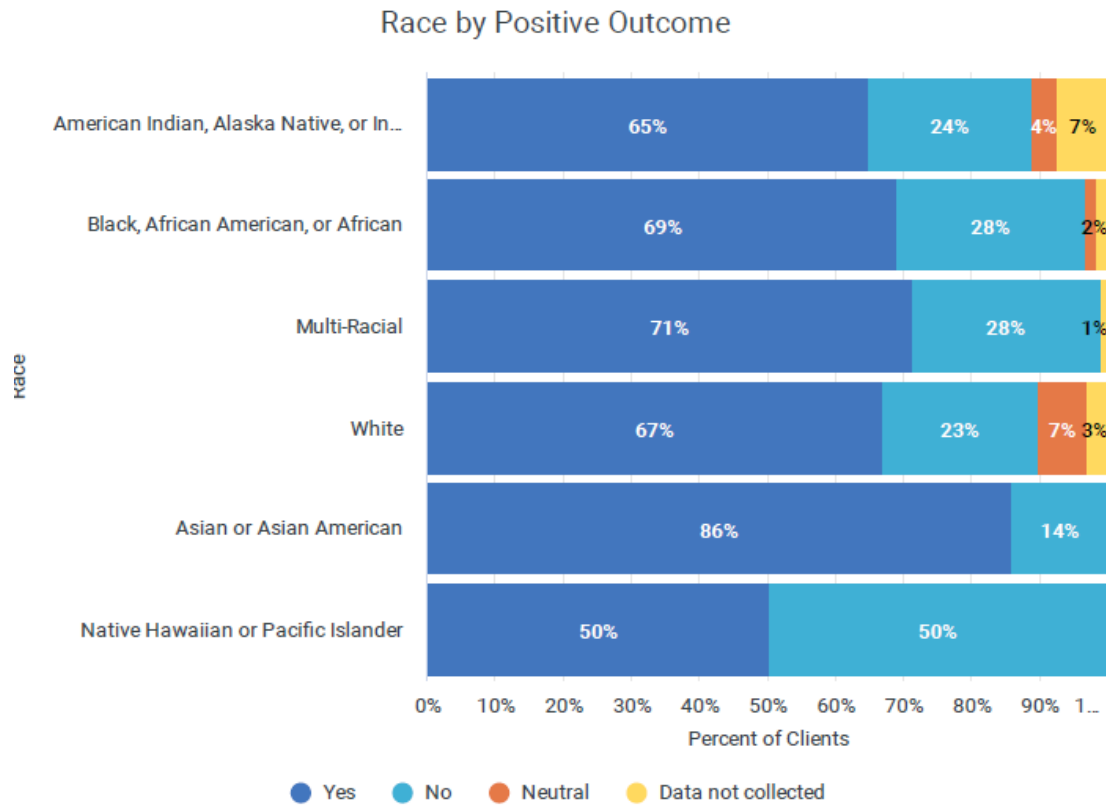
“All Clients Served by Race” – programs that record data in HMIS; emergency shelter, safe haven, transitional housing, PATH, ESG, & those entering permanent housing programs.



While people who are **Black/African American**, **Native Hawaiian/Pacific Islander**, **American Indian/Alaskan Native**, and **Multi-racial** are more likely to experience homelessness than people who are White, they are not more likely to enter programs.

While people who are **Hispanic/Latin(a)(o)(x)** are more likely to experience homelessness than people who are Non-Hispanic/Non-Latin(a)(o)(x), they are not more likely to enter programs.

Equity Analysis in Program Outcomes



The report shows the percentage of positive outcomes by race and ethnicity. Positive outcomes is defined as a permanent housing destination.

Contact Information



Carrie Poser

CoC Director

Wisconsin Balance of State CoC

carrie.poser@wibos.org

PO Box 272, Eau Claire, WI 54702

Phone: 715-598-3301

Website: www.wiboscoc.org