



CHILD ABUSE & NEGLECT  
**Prevention Board**



# **Primary Prevention**

## *Partners in Prevention*

**Wisconsin Balance of State  
Continuum of Care  
Nov. 12, 2021**



# Prevention Board

- Independent board
- Advance statewide policy, public awareness and programming to strengthen families and prevent child maltreatment
- 20 members comprised of state government officials, legislators, and public members



# Mission and Vision

## **Mission**

- Mobilize research and practices to prevent child abuse and neglect and strengthen families in Wisconsin

## **Vision**

- Every child in Wisconsin grows up in a safe, stable, and nurturing environment

## **Primary Goal**

- Prevent first time occurrences of child abuse and neglect across Wisconsin utilizing strategies that are equitable and inclusive of all rural, suburban and urban communities and residents.



# Prevention

**What does  
Primary Prevention  
mean?**



# 1

## PRIMARY PREVENTION

ENTIRE COMMUNITY  
REGARDLESS OF RISK

**Strategies seek to stop maltreatment and other challenges before they occur, buffer against adversity, and promote optimal development of children.**

- ▶ Strengthen Economic Supports for Families
- ▶ Universal Parenting and Healthy Relationship Education/Skill Building
- ▶ Provide Quality Childcare and Education Early in Life
- ▶ Change Social Norms to Support Parents and Positive Parenting
- ▶ Connecting Families to Resources
- ▶ Universal Enhanced Primary Care
- ▶ Father Inclusive Strategies
- ▶ Support Families within their Racial, Cultural and Historical Context

# 2

## SECONDARY PREVENTION

FAMILIES WITH ONE OR  
MORE RISK FACTORS

**Strategies are more intensive and target risk factors such as poverty, substance abuse, mental health concerns, young parental age and disabilities.**

- ▶ Targeted Home Visiting
- ▶ Targeted Parent Education
- ▶ Birth to 3 and Headstart
- ▶ Behavioral Parent Training Programs



**ASSISTANCE  
FOR SELECT FAMILIES**

# 3

## TERTIARY PREVENTION

FAMILIES WITH STRONG  
INDICATORS, OR FAMILIES  
WHERE MALTREATMENT HAS  
ALREADY OCCURRED AND  
PREVENTING RECURRENCE

**Strategies are high intensity and seek to eliminate child maltreatment behavior and its consequences.**

- ▶ Anger Management
- ▶ Wraparound Services
- ▶ Comprehensive Community Services
- ▶ Family Reunification



**RESTORATION & HEALING  
FOR SPECIFIC FAMILIES**

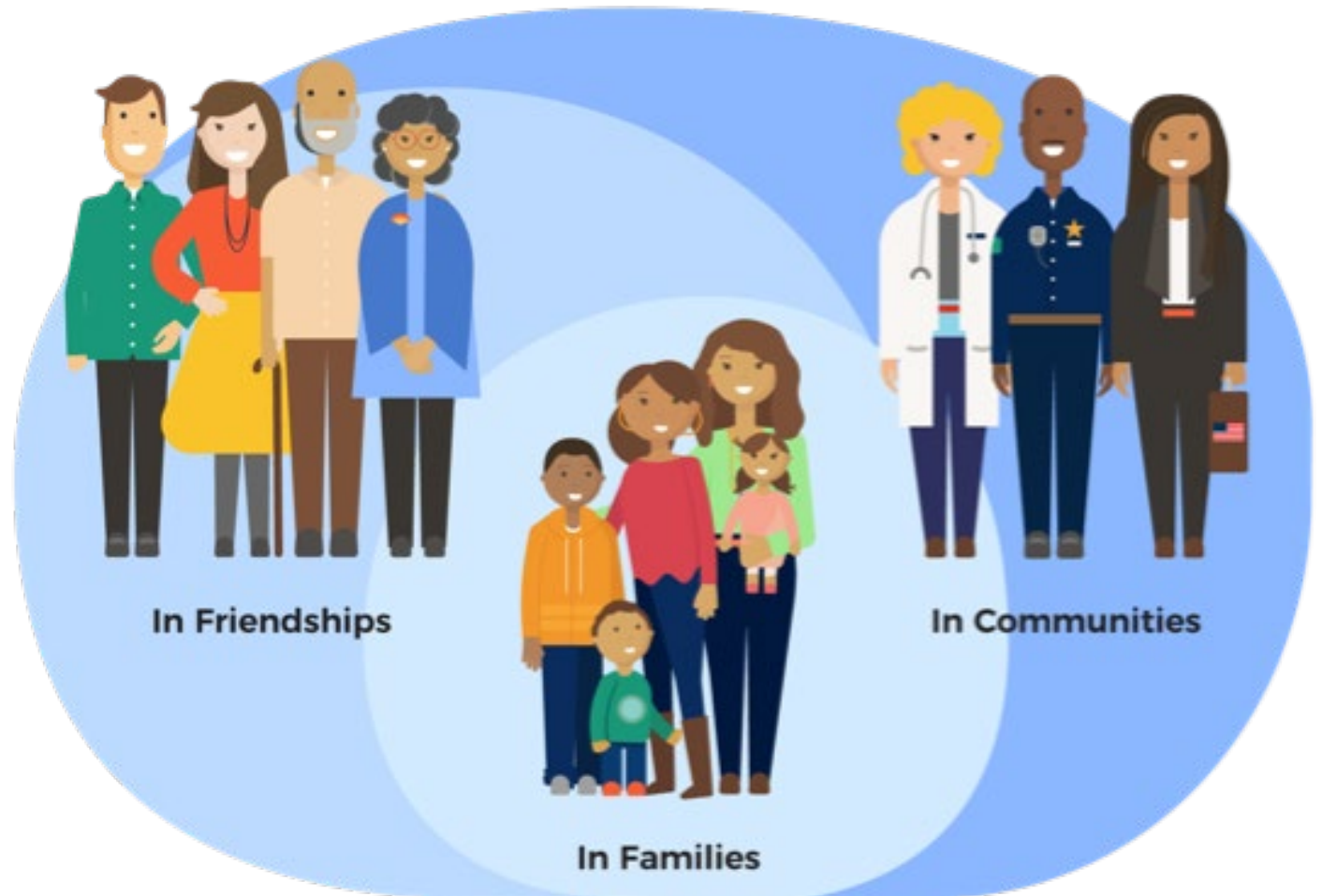


**SUPPORT FOR ALL FAMILIES**

# Public Health Approach

Public health is what we, as a society, do **collectively** to assure the conditions in which (all) people can be healthy.

Institute of Medicine  
*The Future of Public Health*, 1988  
& 1997



# Multisector Approach

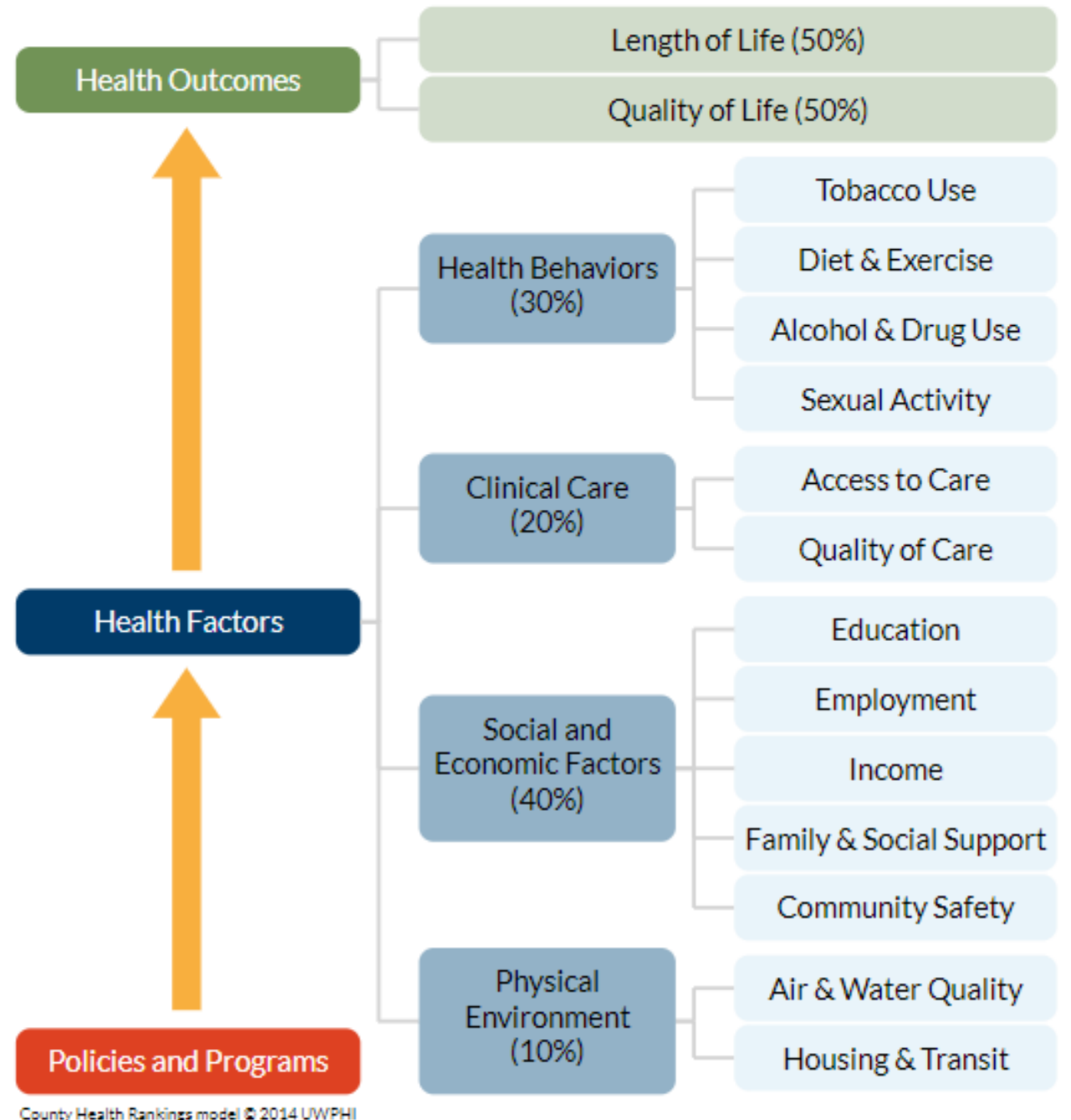


## Preventing Child Abuse and Neglect

<b>Strategy</b>	<b>Approach</b>
<b>Strengthen economic supports to families</b>	<ul style="list-style-type: none"><li>• Strengthening household financial security</li><li>• Family-friendly work policies</li></ul>
<b>Change social norms to support parents and positive parenting</b>	<ul style="list-style-type: none"><li>• Public engagement and education campaigns</li><li>• Legislative approaches to reduce corporal punishment</li></ul>
<b>Provide quality care and education early in life</b>	<ul style="list-style-type: none"><li>• Preschool enrichment with family engagement</li><li>• Improved quality of child care through licensing and accreditation</li></ul>
<b>Enhance parenting skills to promote healthy child development</b>	<ul style="list-style-type: none"><li>• Early childhood home visitation</li><li>• Parenting skill and family relationship approaches</li></ul>

# Social Determinants of Health

- The social determinants of health are the conditions in which people are born, grown, live, work and age, including the health system.
- For more information:  
[County Health Rankings & Roadmaps](#)
- Or explore:  
[County Health Ranking Interactive Model](#)





# Parent, caregiver and family input



# Parent/Caregiver Input

- Parenting Needs during the COVID 19 Pandemic

- [ParentsNeeds\\_FINAL.pdf](#) (English)
- [Necesidades de crianza.pdf](#) (Spanish)

- Listening Sessions for Parents

- [parent/caregiver listening sessions \(PDF\)](#)



As COVID-19 spread across the United States and actions were taken to try to mitigate its impact, parents, caregivers and children experienced widespread reorganization of family, work, school, and social life. Parenting became highly challenging, with parents having to meet multiple competing demands simultaneously, while managing the stress of unique COVID-19 related concerns, such as exposure to illness or potential income loss.

Table 1: Characteristics of Caregivers Who Responded to the Survey

Sample size	180
Demographics	45% parents between ages 31-40 93% female 82% white 41% parents with a 4-year degree 87% are in a relationship, living with partner
Age of children	5% - Under the age of 1 27% - children ages 1 to 5 40% - children ages 6-12
Economic changes during pandemic	42% adult in household had work hours reduced 21% adult in household lost a job 9% lost health insurance coverage

Between September - November 2020, parents and caregivers were surveyed to explore how they were affected and how they had coped during the first six to seven months of the pandemic.<sup>1</sup> See Table 1 for a partial listing of survey respondent characteristics.

### INFLUENCE OF THE PANDEMIC ON PARENT AND FAMILY HEALTH AND WELL BEING

#### Income, Job Loss, and Reduction in Hours

This group of parents was well educated with 96% of participants having some post-secondary education and 66% indicating that they had a four-year degree, professional degree, or doctorate. Nevertheless, 22% of the parents experienced a small decline in income and more than one quarter or 28% experienced a moderate or large decline in income in the past six or seven

<sup>1</sup>The 31-question survey was sent to parents and caregivers with a child (or children) under the age of 19 through Family Resource Centers and Child Care Resource and Referral agencies. The survey also included questions for parents to reflect on how the pandemic has affected their own and their child(ren) physical and emotional well-being along with how connected they are to community resources.

# Parenting Needs During the Pandemic

Influence of the Pandemic on Parenting, family health and well-being

- Income, Job Loss, and Reduction in Hours
- **Stress**
- Mental and physical health

Challenges

- Education of children, Managing stress, Financial concerns, Decline in mental health, Balancing responsibilities



# Facilitated Listening Sessions

## Northern

- Taylor County
- Wood County

## Southeastern

- Milwaukee County
- Racine County
- Kenosha County
- Walworth County

## Northeastern

- Brown County
- Calumet County
- Outagamie County
- Shawano County

## Southern

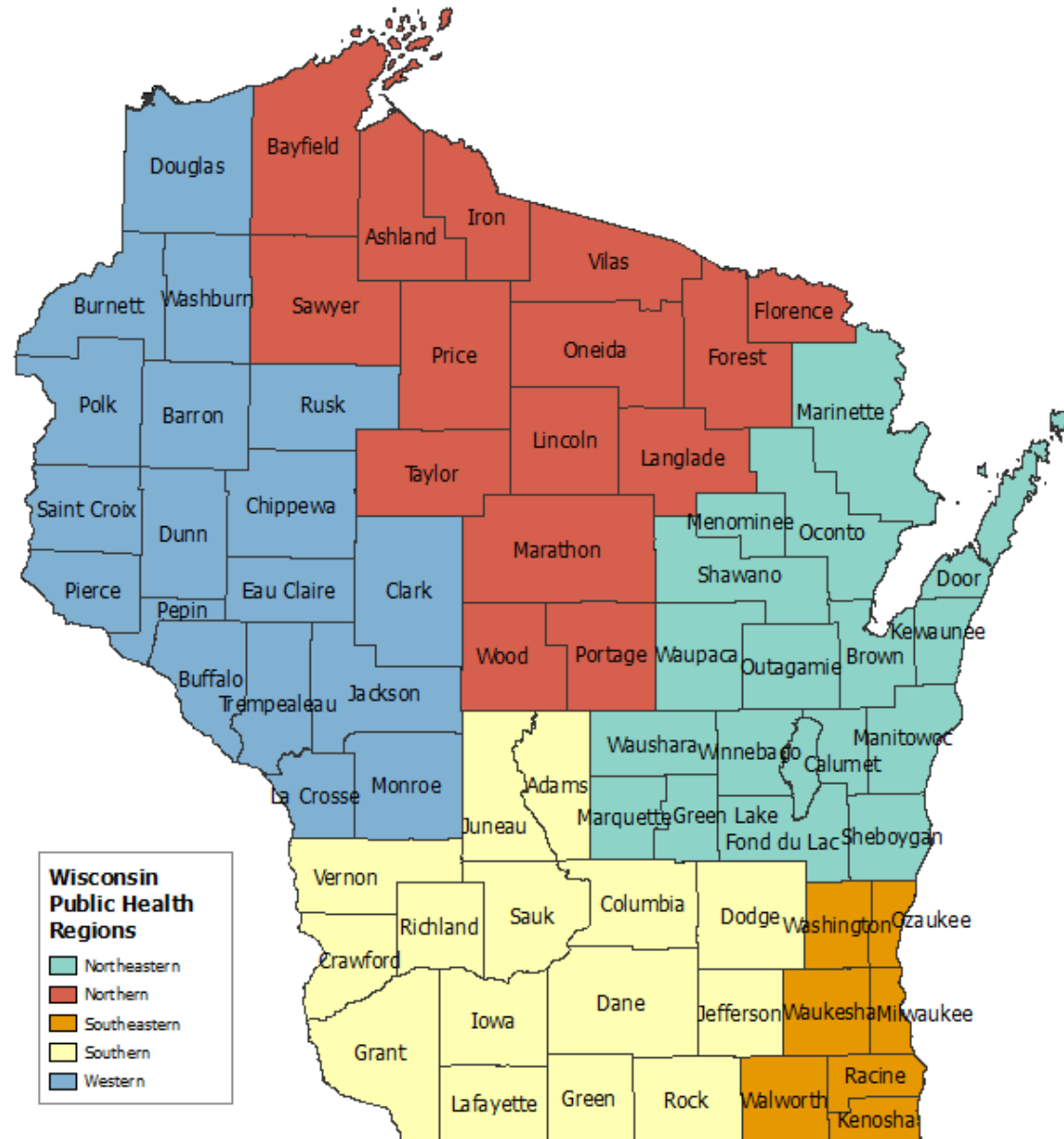
- Rock County

## Western

- Polk County
- St. Croix County
- Burnett County

## Statewide

- Native Americans
- Hispanic/Latin(o)
- LGBTQ+
- African Americans\*



\*Integrated into other sessions



**Total of Participants: 64**

LGBTQ+ Families: 17%

RACE/ETHNICITY/LGBTQ	%
White	43.8%
Hispanic/Latina	20.3%
Native American	18.8%
Black	15.6%
Asian American	1.6%

### Demographics by Listening Session

RACE/ETHNICITY/LGBTQ	GROUP	TOTAL
Black (2), Latina (1), White (3)	Northern & Southeastern	6
Black (1), Asian American (1)	Southern	3
White (3,3)	Western	3
Black (6), Latina (1), White (4)	Southeastern	11
White	Northeastern	7
Hispanic/Latina	Hispanic/Latina	11
Native American	Native American	12
LGBTQ+ White	LGBTQ+ White	11
		<b>64</b>

# Key Findings



1. **Parents are struggling** to navigate systems and policies that are meant to help them.
2. **Trusted and affordable** quality child care and housing are needed. The absence of this is stressful to parents and families.
3. **Meeting the basic needs** for the family prevents parents from being present in the lives of their children and functioning as nurturing, loving, engaged parents.
4. There are critical **mental health services** gaps that need to be addressed.
5. **Addiction support** for individuals and families is needed.

# Key Findings



6. **Parents across the state worry about the safety of children**, bullying and the lack of programming for teens, especially non-sports related programming.
7. **Historical Trauma, addiction and mistrust** are impacting the wellbeing of Native American families, while racism, discrimination, and injustice are a major concerns among all groups.
8. **Intentionality is needed** to address the diverse needs of LGBTQ+ children's and families.
9. **There is a critical lack** of resources and service options for parents in rural WI.
10. **Bilingual (Spanish/English) programs and services are critically needed** to increase access and help bridge the communication/cultural gap between parents and children.



# CONCLUSIONS



**...families are surviving, but very few of those whom we spoke with are thriving.**

Wisconsin's children and families are resilient and have endured a significant amount of stress and trauma, especially over the past two years.

Despite these adversities, families are surviving however, systemic and policy change at all levels of government and society is needed to further support them.



# Funding

## **433001-G22-00001831 Family Support Emergency Funds Grant**

Direct all questions about the application to Merrissa Johnson, [CANPBprocurement@wisconsin.gov](mailto:CANPBprocurement@wisconsin.gov). Applications will be accepted until December 31, 2021 or until all funds are awarded, whichever is sooner.

<https://preventionboard.wi.gov/Pages/Funding/FundingOpportunities.aspx>

# Thank You!

Rebecca Murray

Executive Director

[Rebecca.murray@wisconsin.gov](mailto:Rebecca.murray@wisconsin.gov)

608-267-3678

